



# **The Maldives Health Statistics 2012**

Ministry of Health  
Male', Republic of Maldives



# THE MALDIVES HEALTH STATISTICS 2012

Ministry of Health  
Republic of Maldives

© Ministry of Health 2012

All rights reserved. No part of this publication may be reproduced or transmitted in any form or by any means without a written permission from the Ministry of Health. Excerpts from this publication may be used for research and other purposes provided that due acknowledgment is made.

This publication is intended to provide accurate information and includes materials from sources considered to be reliable. It should also be recognized that the data used in this publication were accurate at the time of compilation and printing although some changes due to revision and change in collection may have occurred since then.

Published by:

Health Information Section, Policy Planning Division

Ministry of Health

Male'

Republic of Maldives.

Tel: +960 3328887

Fax: +960 3328889

Email: [ppd@health.gov.mv](mailto:ppd@health.gov.mv)

Website: <http://www.health.gov.mv>

Data Verification:	Ms. Mariyam Mohamed, Statistical Officer Ms. Aiman Waheed, Senior Administrative Officer
Layout & Design:	Ms. Aiman Waheed, Senior Administrative Officer
Data Compilation:	Ms. Mariyam Mohamed, Statistical Officer
Date of Publication	May 2013

ISBN 978-99915-66-48-1

## TABLE OF CONTENTS

THE MALDIVES HEALTH STATISTICS 2012 .....	2
TABLE OF CONTENTS.....	i
FOREWORD .....	vi
ACKNOWLEDGEMENTS.....	vii
EXECUTIVE SUMMARY .....	viii
NATALITY.....	11
GRAPH 1: CRUDE BIRTH RATE BY SEX PER 1000 POPULATION 2001 – 2011 .....	11
GRAPH 2: TOTAL NUMBER OF BIRTHS, BY PLACE OF BIRTH, 2006 - 2011 .....	11
GRAPH 3: PERCENTAGE OF BABIES BORN WITH LOW BIRTH WEIGHT (<2500 G) BY LOCALITY, 2006 - 2011.....	12
GRAPH 4: PERCENTAGE OF BIRTHS BY MODE OF DELIVERY 2011 .....	12
GRAPH 5: PERCENTAGE OF BIRTHS TO MOTHERS, UNDER 20 YEARS OF AGE, 2001 – 2011 .....	13
TABLE 1: CRUDE BIRTH RATE PER 1000 POPULATION, 2001 – 2011 .....	13
TABLE 2: LIFE EXPECTANCY AT BIRTH, 2001 - 2011 .....	14
TABLE 3: TOTAL NUMBER OF LIVE BIRTHS BY GENDER, 2001 - 2011 .....	14
TABLE 4: NUMBER AND PERCENTAGES OF BIRTHS, MALE' AND ATOLLS, 2007 - 2011.....	15
TABLE 5A: LIVE AND STILL BIRTHS BY PLACE OF DELIVERY, 2007 - 2009.....	15
TABLE 5B: LIVE AND STILL BIRTHS BY PLACE OF DELIVERY, 2010 - 2011.....	16
TABLE 6A: NUMBER AND PERCENTAGE OF BIRTHS BY MODE OF DELIVERY, 2007 - 2008 .....	16
TABLE 6B: NUMBER AND PERCENTAGE OF BIRTHS BY MODE OF DELIVERY, 2009 - 2011 .....	17
TABLE 7A: NUMBER AND PERCENTAGE OF LIVE AND STILLBIRTHS, MODE OF DELIVERY BY HEALTH FACILIITY, 2010.....	18
TABLE 7B: NUMBER AND PERCENTAGE OF LIVE AND STILLBIRTHS, MODE OF DELIVERY BY HEALTH FACILIITY, 2011.....	19
TABLE 8A: AVERAGE BIRTH WEIGHT BY SEX, 2007 - 2009.....	20
TABLE 8B: AVERAGE BIRTH WEIGHT BY SEX, 2010 - 2011.....	20
TABLE 9: BIRTH WEIGHT BY CATEGORIES, 2007 - 2011 .....	21
TABLE 10A: NUMBER AND PERCENTAGE OF LIVE BIRTHS BY BIRTH WEIGHT & BY SEX, 2010.....	22
TABLE 10B: NUMBER AND PERCENTAGE OF LIVE BIRTHS BY BIRTH WEIGHT & BY SEX, 2011.....	23
TABLE 11A: NUMBER AND PERCENTAGES OF LIVE & STILL BIRTHS BY TYPE OF HEALTH PROFESSIONAL ATTENDED- 2010 - 2011.....	24
TABLE 11B: NUMBER AND PERCENTAGES OF LIVE AND STILL BIRTHS BY TYPE OF HEALTH PROFESSIONAL ATTENDED- 2010 – 2011... (CONTINUED) .....	25

TABLE 12: NUMBER AND PERCENTAGE OF LIVE BIRTHS BY AGE OF MOTHER, 2009 – 2011 .....	26
MORTALITY .....	28
GRAPH 6: NEONATAL MORTALITY RATE PER 1000 LIVE BIRTHS 2001 – 2011 .....	28
GRAPH 7: INFANT MORTALITY RATE PER 1000 LIVE BIRTHS 2001 - 2011 .....	28
GRAPH 8: UNDER FIVE MORTALITY RATE PER 1000 LIVE BIRTHS 2001 - 2011.....	29
GRAPH 9: MATERNAL MORTALITY RATIO PER 100,000 LIVE BIRTHS 2001 – 2011.....	29
GRAPH 10: AGE SPECIFIC MORTALITY RATE PER 10,000 POPULATION, 2010 .....	30
GRAPH 11: AGE SPECIFIC MORTALITY RATE PER 10,000 POPULATION, 2011 .....	30
TABLE 13: CRUDE DEATH RATE PER 1000 POPULATION, 2001 - 2011 .....	31
TABLE 14: STILL BIRTH RATE PER 1000 LIVE BIRTHS, 2001 - 2011 .....	31
TABLE 15: INFANT MORTALITY RATE PER 1000 LIVE BIRTHS BY SEX, 2001 - 2011.....	32
TABLE 16: UNDER FIVE MORTALITY RATE PER 1000 LIVE BIRTHS BY SEX, 2001 - 2011.....	32
TABLE 17: MATERNAL MORTALITY RATIO PER 100,000 LIVE BIRTHS, 2001 - 2011.....	33
TABLE 18: NEONATAL DEATH RATE PER 1000 LIVE BIRTHS, 2001 - 2011 .....	33
TABLE 19: PERINATAL AND POSTNATAL DEATH RATE PER 1000 LIVE BIRTHS, 2001 - 2011 .....	34
TABLE 20: AGE SPECIFIC MORTALITY RATE PER 10,000 POPULATION, 2009 - 2011 .....	34
TABLE 21: TOTAL NUMBER OF DEATHS BY SEX, 2001 - 2011.....	35
TABLE 22A: TOTAL NUMBER OF DEATHS BY AGE, 2007 - 2009.....	35
TABLE 22B: TOTAL NUMBER OF DEATHS BY AGE, 2010 - 2011 .....	36
TABLE 23A: TWENTY LEADING CAUSES OF DEATH FOR ALL AGES, 2010 .....	37
TABLE 23B: TWENTY LEADING CAUSES OF DEATH FOR ALL AGES, 2011 .....	38
TABLE 24: DEATHS BY AGE GROUP FOR THALASSAEMICS, 2001 - 2011.....	39
MORBIDITY .....	41
GRAPH 12: NUMBER OF DENGUE FEVER, DENGUE HAEMORRHAGIC FEVER & DENGUE SHOCK SYNDROME CASES 2009.....	41
GRAPH 13: NUMBER OF DENGUE FEVER, DENGUE HAEMORRHAGIC FEVER & DENGUE SHOCK SYNDROME CASES 2010.....	42
GRAPH 14: NUMBER OF DENGUE FEVER, DENGUE HAEMORRHAGIC FEVER & DENGUE SHOCK SYNDROME CASES 2011.....	43
GRAPH 15: NUMBER OF CHIKUNGUNYA CASES 2009, 2010 & 2011.....	44
TABLE 25: PREVALENCE AND INCIDENCE OF TUBERCULOSIS, 2001 - 2011 .....	45
TABLE 26: PREVALENCE AND INCIDENCE LEPROSY, 2001 - 2011 .....	45
TABLE 27: INCIDENCE AND CASE FATALITY RATES FOR DIARRHOEA, 2001 - 2011 .....	46
TABLE 28: HIV STATUS IN MALDIVES, 2001 - 2011 .....	46

TABLE 29: VACCINATION COVERAGE IN THE MALDIVES, 2001 - 2011.....	47
TABLE 30: SEXUALLY TRANSMITTED INFECTIONS – SYPHILIS STATUS, 2001 - 2011 .....	47
TABLE 31: SEXUALLY TRANSMITTED INFECTIONS BY SYMPTOMATIC DIAGNOSIS, 2006 - 2011 ....	47
TABLE 32: CASES OF DENGUE FEVER BY MONTH, 2006 - 2011 .....	48
TABLE 33: CASES OF DENGUE HAEMORRAGIC FEVER BY MONTH, 2006 - 2011.....	48
TABLE 34: CASES OF DENGUE SHOCK SYNDROME BY MONTH, 2006 - 2011 .....	49
TABLE 35: CASES OF CHIKUNGUNYA BY MONTH, 2006 - 2011.....	49
TABLE 36: THALASSAEMIA MAJOR DEATH AND NEW CASES IN THE MALDIVES, 2001 - 2011.....	50
TABLE 37: THALASSAEMIA MAJOR CHILDREN IN THE MALDIVES, 2006 - 2011 .....	50
TABLE 38: PERCENTAGE OF THALASSAMIA CASES AMONG TOTAL SCREENED BY CLASSIFICATION, 2001 - 2011 .....	51
HUMAN RESOURCES.....	53
TABLE 39A: DISTRIBUTION OF MEDICAL STAFF IN mALE' AND ATOLLS BY SEX, 2009.....	53
TABLE 39B: DISTRIBUTION OF MEDICAL STAFF IN mALE' AND ATOLLS BY SEX, 2010.....	54
TABLE 40A: DISTRIBUTION OF MEDICAL PERSONNEL BY LOCALS AND EXPATRIATES, 2009 .....	55
TABLE 40B: DISTRIBUTION OF MEDICAL PERSONNEL BY LOCALS AND EXPATRIATES, 2010 .....	56
HEALTH CARE FINANCE.....	58
TABLE 41A: NATIONAL HEALTH ACCOUNTS – SELECTED RATIO* INDICATORS FOR EXPENDITURES ON HEALTH 2011 .....	58
TABLE 41A: NATIONAL HEALTH ACCOUNTS – SELECTED RATIO* INDICATORS FOR EXPENDITURES ON HEALTH 2011, CONT'D.....	59
TABLE 41B: NATIONAL HEALTH ACCOUNTS – HEALTH SYSTEM EXPENDITURE & FINANCING, 2011 .....	59
TABLE 41B: NATIONAL HEALTH ACCOUNTS – HEALTH SYSTEM EXPENDITURE & FINANCING 2011, CONT'D.....	60
TABLE 42: ALLOCATIONS AND EXPENDITURE OF GOVERNMENT BUDGET ON HEALTH SECTOR, 2004 – 2011.....	61
SOCIAL PROTECTION.....	63
TABLE 43: NUMBER OF PERSONS COVERED UNDER DIFFERENT SOCIAL PROTECTION SCHEMES BY ATOLL, 2011.....	63
TABLE 44: GOVERNMENT EXPENDITURE ON DIFFERENT SOCIAL PROTECTION SCHEMES BY TYPE, 2011 .....	64
TABLE 45: EXPENDITURE ON ELECTRICITY SUBSIDY mALE', 2010-2011.....	64
TABLE 46: EXPENDITURE ON MADHANA SERVICES BY TYPE OF INSTITUTION AND ATOLL, 2011	65

TABLE 47: EXPENDITURE ON PERSONS COVERED UNDER MADHANA POLICIES BY TYPE OF SERVICE, 2011 .....	66
DATA FROM NATIONAL HEALTH LABORATORY .....	68
WATER MICROBIOLOGY .....	68
GRAPH 15: WATER MICROBIOLOGY SAMPLES FOR 2011 .....	68
FOOD MICROBIOLOGY .....	69
GRAPH 16: FOOD MICROBIOLOGY SAMPLES, 2011 .....	69
WATER CHEMISTRY.....	70
GRAPH 17: WATER CHEMISTRY SAMPLES, 2011 .....	70
FOOD CHEMISTRY .....	71
GRAPH 18: FOOD CHEMISTRY SAMPLES, 2011 .....	71
DATA FROM SURVEYS .....	73
GRAPH 19: PROPORTION OF UNDER-FIVE CHILDREN WHO HAVE RECEIVED VITAMIN A IN THE PAST 6 MONTHS BY REGION.....	73
GRAPH 20: IMMUNIZATION COVERAGE, 2009.....	74
TABLE 48: NUTRITION STATUS OF CHILDREN UNDER 5 YEARS OF AGE .....	75
TABLE 49: PERCENTAGE DISTRIBUTION OF CHILDREN EXCLUSIVELY BREASTFED BY COMPLETED AGE IN MONTHS - MICS 2001 .....	75
TABLE 50: DISTRIBUTION OF PREVALENCE OF EXCLUSIVE BREASTFEEDING .....	75
TABLE 51: PREVALENCE OF NCD RISK - 2004 .....	76
TABLE 52: COMPARISON OF REPRODUCTIVE HEALTH RELATED INDICATORS - 1999, 2004, 2007 & 2009.....	76
TABLE 53: ANAEMIA AMONG WOMEN –MICS 2001 .....	77
TABLE 54: ANAEMIA AMONG WOMEN – NMS 2007 .....	77
HOSPITAL STATISTICS .....	79
GRAPH 21 : NUMBER OF OUTPATIENT VISITS BY HOSPITAL 2008 - 2011.....	79
GRAPH 22 : AVERAGE NUMBER OF OUTPATIENTS PER DAY BY HOSPITAL 2008 - 2011 .....	79
GRAPH 23: AVERAGE LENGTH OF STAY BY HOSPITAL 2008 - 2011 .....	80
GRAPH 24: LSCS PERCENTAGE BY HOSPITAL 2008 - 2011 .....	80
GRAPH 25: NUMBER OF INVESTIGATIONS PER PATIENT, BY hospitals 2009 - 2011 .....	81
TABLE 55: NUMBER OF OUTPATIENT VISITS BY HOSPITAL 2008 - 2011 .....	82
TABLE 56: AVERAGE NUMBER OF OUTPATIENT VISITS PER DAY, BY HOSPITAL, 2008 - 2011.....	83
TABLE 57: TOTAL NUMBER OF INPATIENTS, BY HOSPITAL, 2008 - 2011.....	84
TABLE 58: AVERAGE HOSPITAL LENGTH OF STAY, BY HOSPITAL, 2008 - 2010.....	85

TABLE 59: AVERAGE BED OCCUPANCY RATE, BY HOSPITAL, 2008 - 2011 .....	86
OTHERS.....	88
TABLE 43: CONTRACEPTIVE USER RATE, 2006 - 2011.....	88
TABLE 44: CONTRACEPTIVE USER RATE BY ATOLLS, 2006 - 2011 .....	89
TABLE 45: DRUG ABUSE CASES REPORTED BY AGE, 2001 - 2011 .....	90
TABLE 46: IMPORTS OF TOBACCO, 2001 - 2011.....	90
APPENDIX.....	92
PROJECTED MID YEAR POPULATION ESTIMATES BY AGE 2007-2013.....	92
CENSUS POPULATION BY SEX 1990-2006 .....	92
POPULATION GROWTH RATE 1990-2006 .....	92
SUMMARY MEASURES OF FERTILITY BASED ON REPORTED BIRTH DATA FROM CENSUS, MALDIVES 1990, 2000 AND 2006.....	93
REFERENCES .....	95





## FOREWORD

Government of Maldives is committed to continue to improve the health and well being of the people of Maldives through affordable and quality health services and by providing better access to health care. All inhabited islands of the country have a health care delivery centre managed and funded by the government. The provision of health care services in Maldives is through a 5 tier health care system. Severe limitation of local technical professionals and scarcity of financial resources are main challenges in meeting the needs of the community. The role of private sector is encouraged by the state, especially in the urban and semi urban islands. With expansion of services by the public as well as private sector the regulatory function of the health system needs to be strengthened.

Health Statistics in the form of an annual publication aims to provide factual information on our performance. Every effort is made to provide accurate data on the health services provided at both public and private health care facilities. The statistics support in formulating evidence-based health policies and monitor achievement of targets set in our National Plans and international commitments such as the Millennium Development Goals (MDGs). Furthermore, it is essential that high quality data are collected and regular data flow from different centres to the ministry is ensured for close monitoring of the current health status of the country so that appropriate measures can be taken to bring about necessary health reforms.

The Maldives Health Statistics 2012 is the sixth publication of this series. The information in the publication represents data from January to December 2011 with comparable figures for past 5 years.

For bringing out this publication, I sincerely acknowledge the hard work of Health Information Section staff, Ministry of Health and also thank all the staff who were involved in providing the statistics from the departments, divisions and health care facilities. I trust that policy makers, planners, researchers and students will make extensive use of this publication and our efforts in disseminating health information will be further strengthened.



Dr. Ahmed Jamsheed Mohamed  
Minister of Health

## ACKNOWLEDGEMENTS

The Maldives Health Statistics 2012 was prepared by the Health Information Section of the Ministry of Health. This publication was made possible through the valuable contribution from several concerned authorities and stakeholders; including the Health Care Institutions, divisions of Ministry of Health, Centre for Community Health and Disease Control (CCHDC) presently named as Health Protection Agency (HPA), National Social protection Agency (NSPA), Maldives Food and Drug Authority (MFDA), National Thalassaemia Centre presently named as Maldives Blood Services (MBS), Department of National Planning, Maldives Police Services and Maldives Customs Services. The demographic data provided by Department of National Planning was instrumental in computation of several of the indicators. I sincerely acknowledge the continued support and co-operation of these authorities in providing the necessary information.

Majority of the information contained in this publication is from the National Vital Statistics System (VSS) maintained by the Ministry of Health. The data for this system is obtained from the National Vital Registration System (VRS) maintained by Department of National Registration (DNR). I gratefully acknowledge the support provided by VRS staff at the Department of National Registration. Further, my appreciation goes to staff of Health Information Section, Ministry of Health for compiling the data, and making this publication possible.



Dr. Sheeza Ali

Director General of Health Services

## EXECUTIVE SUMMARY

The Maldives Health Statistics is published with the main objective of providing easy access to up-to-date comprehensive statistical information on various aspects of health. The publication is divided into several subsections. This publication also includes updates and revisions of the data published in previous years.

During the last decade the population growth rate shows a trend towards stabilization. There was a slight increase in the Crude Birth Rate in the last few years, but has stabilized at 22 per 1000 population. However, an increase in birth rate is predicted in the years to come as the dominating young population reaches the reproductive age. And the trends show that in the last 10 years, Crude Death Rate has remained at 3 or 4 per 1000 population, mainly due to decline in infant and child mortality rates over the last two decades. Effective immunization programmes and access to better health care throughout the country has played a major role in the fall of death rates.

From observing the trends in the past 10 years it shows that the infant mortality rates (IMR) and child mortality rates have been slowly declining. Reduction in Child Mortality Rate is one of the goals of the Millennium Development Goals (MDGs) and utmost priority has been placed to reduce the Child Mortality Rate. The baseline data of 1990 indicates that Under-Five Mortality Rate stood at 48 per 1000 live births while IMR stood at 34 per 1000 live births. The MDG target for Maldives is to reduce Under Five Mortality to 16 per 1000 live births by the end of 2015. Thus, we are on track to achieve this target as the under five mortality rate has remained below 16 per 1000 live births in the last 5 years. We are now at a stage where work has to be done to sustain the achievements. Interventions that reduce neonatal mortality as well as those that deal with under-five malnutrition must be prioritized.

Maternal Mortality has been reduced significantly over the years. Maternal Mortality Ratio (MMR) was 56 per 100,000 live births in 2011. The baseline for MMR in 1990 was 500 per 100,000 live births. Even though, there are slight fluctuations in the MMR in recent years, the MDG target of reducing MMR by half by 2015 has been achieved. However, it has to be noted that the MMR figures can change considerably in a country like Maldives with such a small population. Even a single maternal death can have a large effect on the MMR.

Looking at the cause of death data it can be observed that there is a high number of ill-defined causes. This means the causes certifiers are putting on the death certificates do not provide enough information to properly establish the cause of death. Since the cause of death data is important in health planning and establishing priority programs, it is imperative that good quality causes of death data are produced. For this purpose we need to improve death certification and provide appropriate training to medical professionals and coders. This will enable us to strengthen establishing a clear cause of death from the maintained documentation.

In 2010, the leading cause of death for the country was hypertensive diseases, which was 18% of the total deaths. And in 2011, the top cause of death was heart diseases.

Vector borne diseases such as Dengue and Chikungunya continue to be reported throughout the year, with Dengue fever most prevalent during June to August. In 2011 there was a Dengue outbreak which reported a total of 2909 dengue cases and also reported the highest number of deaths to date that was reported in a year. During the dengue peak in July 2011 a total of 595 Dengue fever cases and 97 Dengue Hemorrhagic fever cases were reported. Measures need to be taken to eliminate mosquito breeding grounds and take special precautions, especially during the peak seasons of disease, to reduce the number of Dengue cases.

It has to be noted that data collection mechanisms for non-communicable diseases (NCDs) need to be strengthened as the country is in transition from communicable diseases to a higher burden of NCDs.

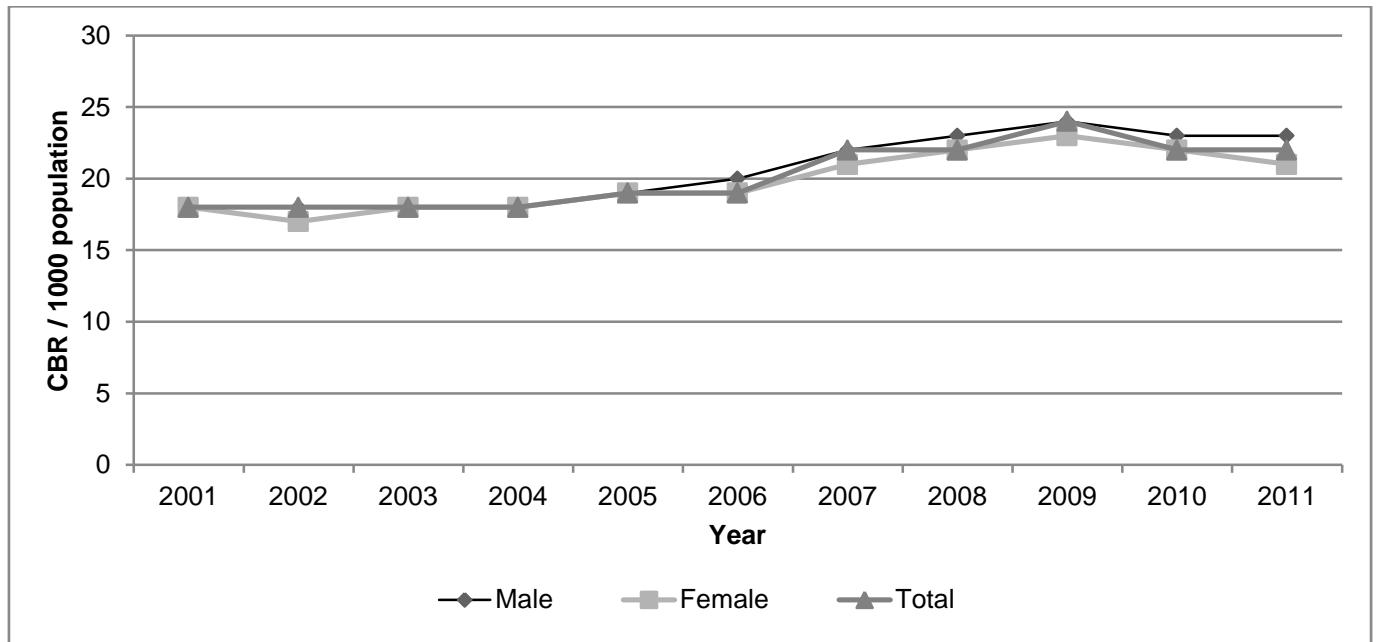
Routinely collected Human Resource and health expenditure data has some limitations due to lack of appropriate data collection systems in place. And with the recent health care reforms in service provision especially the newly formed health service corporations challenged the collection of accurate data on human resources as it is not properly maintained and or collected.

Looking at other data, childhood immunization is an area we are currently achieving good results and the MDG target for immunization of children under 1 for measles was achieved in 2009. Overall, it can be said that the trends show improvement in the health and well being of people of Maldives as evident from the health indicators such as Crude Death Rate, Infant Mortality Rate, Under-five Mortality Rate and Maternal Mortality Ratio. Consistent improvements in quality of services are crucial to sustain these developments and further the achievements. Improvements in data collection, collation and analysis are the gateways for proper monitoring of effectiveness and for the application of evidence based decisions when formulating health policies.

# *Natality*

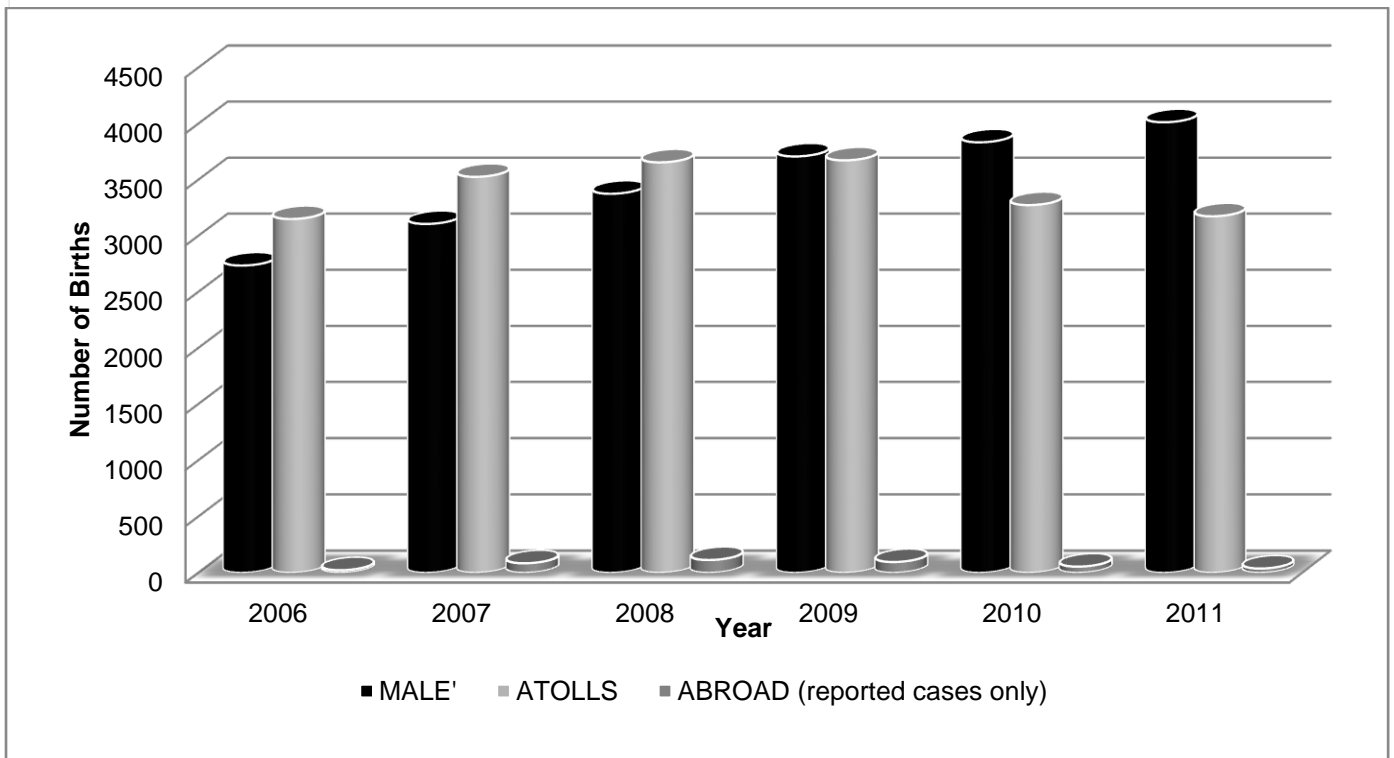
## NATALITY

**GRAPH 1: CRUDE BIRTH RATE BY SEX PER 1000 POPULATION 2001 – 2011**



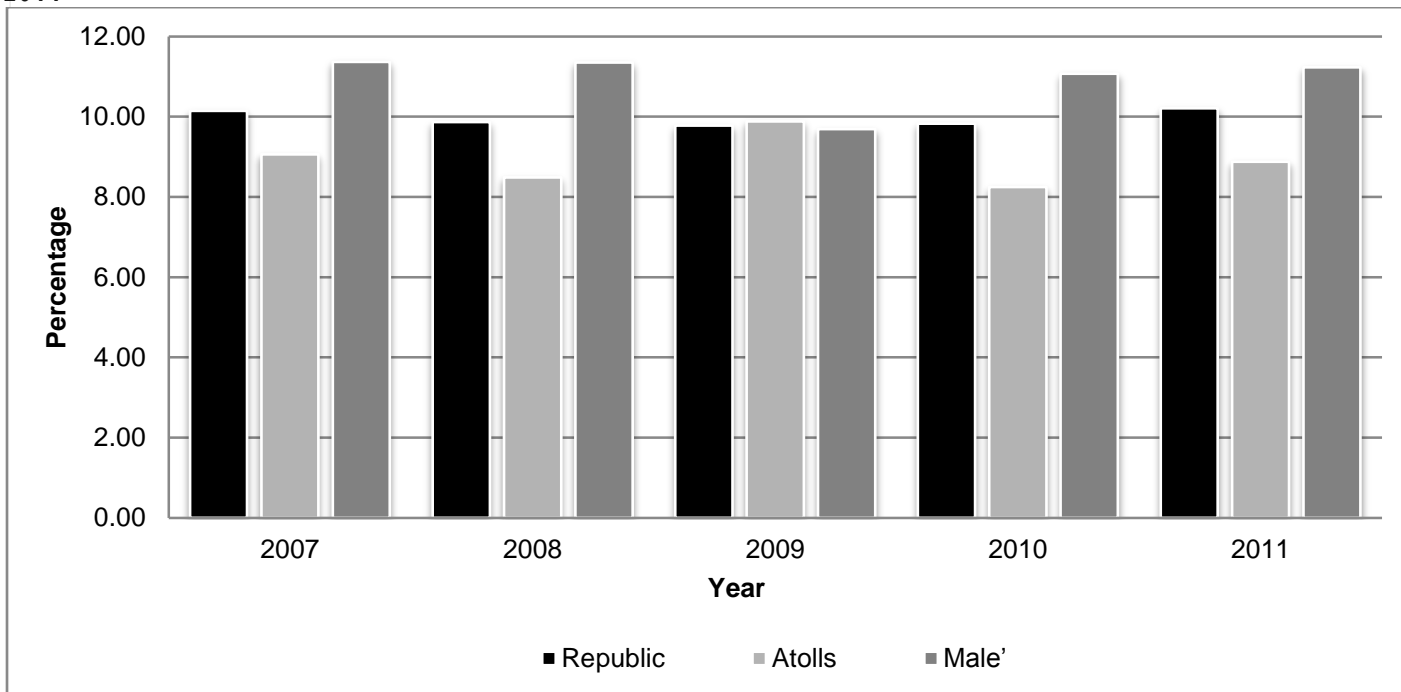
Source: Vital Statistics System, Ministry of Health 2011

**GRAPH 2: TOTAL NUMBER OF BIRTHS, BY PLACE OF BIRTH, 2006 - 2011**



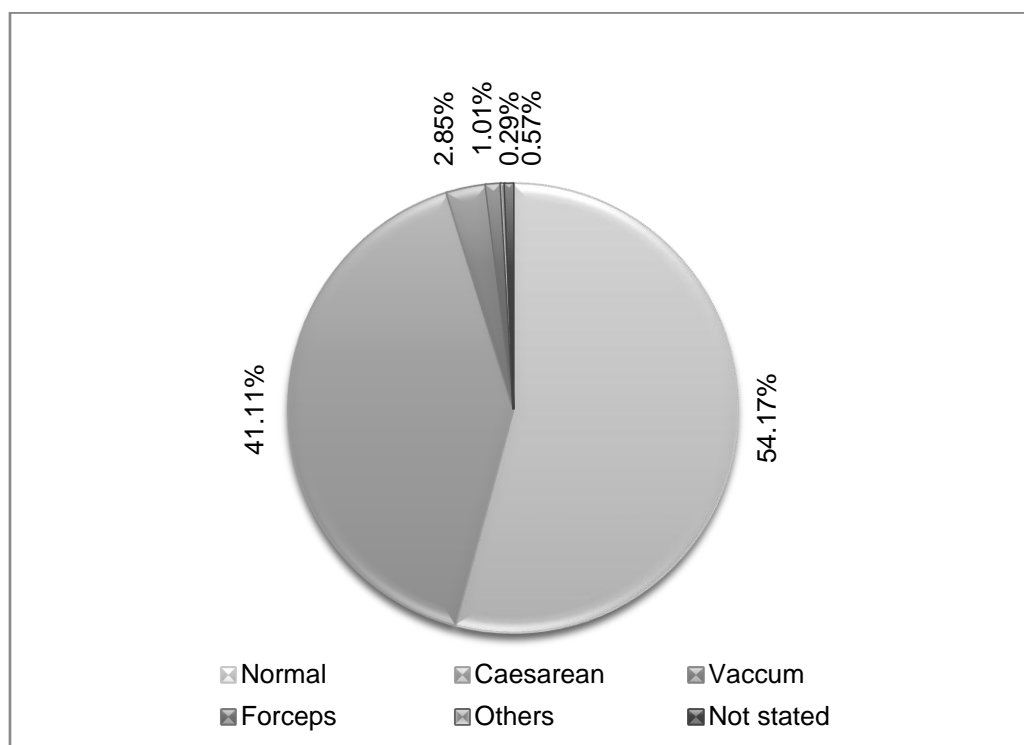
Source: Vital Statistics System, Ministry of Health 2011

**GRAPH 3: PERCENTAGE OF BABIES BORN WITH LOW BIRTH WEIGHT (<2500 G) BY LOCALITY, 2006 - 2011**



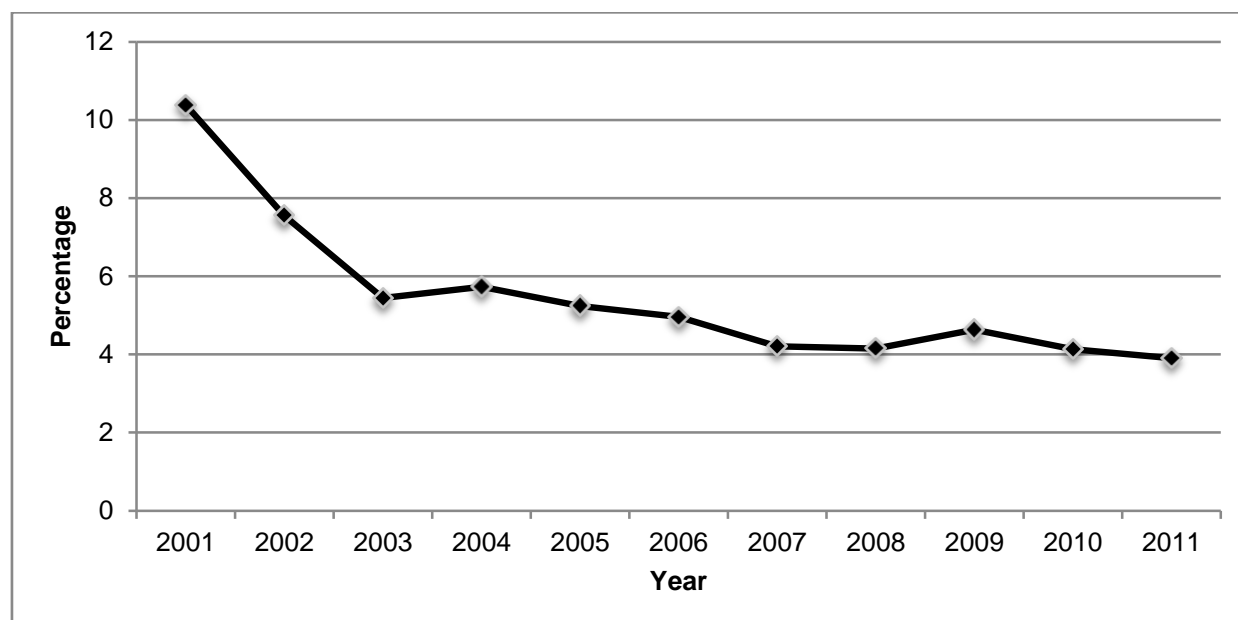
Source: Vital Statistics System, Ministry of Health 2011

**GRAPH 4: PERCENTAGE OF BIRTHS BY MODE OF DELIVERY 2011**



Source: Vital Statistics System, Ministry of Health 2011

**GRAPH 5: PERCENTAGE OF BIRTHS TO MOTHERS, UNDER 20 YEARS OF AGE, 2001 – 2011**



Source: Vital Statistics System, Ministry of Health 2011

**TABLE 1: CRUDE BIRTH RATE PER 1000 POPULATION, 2001 – 2011**

Year	Republic			Atolls			Male'		
	Total	Male	Female	Total	Male	Female	Total	Male	Female
2001	18	18	18	16	16	16	22	22	22
2002	18	18	17	15	16	15	24	24	25
2003	18	18	18	15	16	15	26	26	25
2004	18	18	18	15	15	14	27	26	28
2005	19	19	19	14	14	14	31	31	32
2006 *	19	20	19	16	16	16	26	27	26
2007	22	22	21	18	18	17	29	30	28
2008	22	23	22	18	18	17	31	32	30
2009	24	24	23						
2010	22	23	22						
2011	22	23	21						

Source: Vital Statistics System, Ministry of Health 2011

\* Crude Birth Rate calculated using the Census population. 2006 = 298,968

Note: Crude birth rate is not calculate separately for Atolls and Male' for 2009 & 2010



**TABLE 2: LIFE EXPECTANCY AT BIRTH, 2001 - 2011**

Year	Male	Female
2001	70.2	70.7
2002	70.0	70.9
2003	70.4	71.3
2004	71.1	72.1
2005	71.7	72.7
2006	72.0	73.2
2007	72.3	73.7
2008	72.5	74.1
2009	72.5	74.2
2010	72.6	74.4
2011	72.83	74.81

Source: Department of National Planning 2011

\* Note: From 2000 onwards the life expectancy is generated using the software MORTPAK

**TABLE 3: TOTAL NUMBER OF LIVE BIRTHS BY GENDER, 2001 - 2011**

Year	Republic				Atolls				Male'			
	Total	Male	Female	Not Stated	Total	Male	Female	Not Stated	Total	Male	Female	Not Stated
2001	4898	2466	2432	0	3262	1621	1641	0	1636	845	791	0
2002	5005	2589	2415	1	3126	1642	1484	0	1879	947	931	1
2003	5157	2687	2470	0	3191	1650	1541	0	1966	1037	929	0
2004	5221	2683	2538	0	3076	1597	1479	0	2145	1086	1059	0
2005	5551	2812	2739	0	3094	1541	1553	0	2457	1259	1198	0
2006	5849	3018	2830	1	3141	1636	1505	0	2708	1382	1325	1
2007	6659	3440	3219	0	3571	1854	1717	0	3088	1586	1502	0
2008	7095	3694	3399	2	3746	1961	1785	0	3349	1733	1614	2
2009	7423	3784	3639	0	3738	1937	1801	0	3685	1847	1838	0
2010	7115	3694	3421	0	3249	1695	1554	0	3811	1969	1842	0
2011	7182	3797	3385	0	3156	1723	1433	0	3988	2048	1940	0

Source: Vital Statistics System, Ministry of Health 2011

Republic data includes births occurred abroad (2011 abroad births (Not stated =38, Male=26, Female=12))

Note1: some of the figures have been revised as previously unavailable data is available.

Note 2: All year's total includes births occurred abroad as well, therefore Atolls total plus Male' total will not be same as Republic total.

**TABLE 4: NUMBER AND PERCENTAGES OF BIRTHS, MALE' AND ATOLLS, 2007 - 2011**

Place of birth	2007			2008			2009		
	Live births	Still Births	Total births	Live births	Still Births	Total Births	Live births	Still Births	Total Births
<b>Male'</b>	3088	18	3106	3349	26	3375	3685	23	3708
	99.42%	0.58%	100%	99.23%	0.77%	100%	99.38	0.62%	100%
<b>Atolls</b>	3486	40	3526	3632	23	3655	3642	31	3673
	98.87%	1.13%	100%	99.37%	0.63%	100%	99.16%	0.84%	100%
<b>Abroad</b>	85	NA	85	114	NA	114	96	NA	96
	<i>Percentage for abroad not calculated since still birth data not available</i>								
<b>TOTAL</b>	6659	58	6717	7095	49	7144	7423	54	7477
	99.14%	0.86%	100%	99.31%	0.69%	100%	99.30%	72.00%	100%
Place of birth	2010			2011					
	Live births	Still Births	Total Births	Live births	Still Births	Total Births			
<b>Male'</b>	3811	23	3834	3988	25	4013			
	99.40%	0.60%	100%	99.38%	0.62%				
<b>Atolls</b>	3249	25	3274	3156	18	3174			
	99.24%	0.76%	100%	99.43%	0.57%				
<b>Abroad</b>	55	NA	55	38	NA	38			
	<i>Percentage for abroad not calculated since still birth data not available</i>								
<b>TOTAL</b>	7115	48	7163	7182	43	7225			
	99.33%	0.67%	100%	99.40%	0.60%				

Source: Vital Statistics System, Ministry of Health 2011

Note: NA – data not available

**TABLE 5A: LIVE AND STILL BIRTHS BY PLACE OF DELIVERY, 2007 - 2009**

Place of birth	2007		2008		2009	
	Live births	Still Births	Live births	Still Births	Live births	Still Births
<b>IGMH</b>	2234	17	2392	17	2988	17
<b>HulhuMale' Hospital</b>	62	0	63	0	32	0
<b>ADK Hospital</b>	783	5	885	5	663	5
<b>Regional Hospitals</b>	1603	17	1739	17	1756	17
<b>Atoll Hospitals</b>	1300	11	1417	11	1477	11
<b>Health Centres</b>	427	3	407	3	369	3
<b>Health Posts</b>	34	0	4	0	12	0
<b>Home</b>	117	1	60	1	21	1
<b>Other</b>	11	0	12	0	9	0
<b>Not Stated</b>	3	0	2	0	0	0
<b>Abroad</b>	85	NA	114	NA	96	NA
<b>TOTAL</b>	6659	54	7095	54	7423	54

Source: Vital Statistics System, Ministry of Health 2011

**TABLE 5B: LIVE AND STILL BIRTHS BY PLACE OF DELIVERY, 2010 - 2011**

Place of birth	2010		2011	
	Live births	Still Births	Live births	Still Births
<i>IGMH</i>	2655	20	2600	24
<i>HulhuMale' Hospital</i>	75	0	98	0
<i>ADK Hospital</i>	1072	3	1291	1
<i>Regional Hospitals</i>	1839	16	1904	9
<i>Atoll Hospitals</i>	1120	7	1029	8
<i>Health Centres</i>	267	0	181	1
<i>Health Posts</i>	5	1	4	0
<i>Home</i>	19	1	29	0
<i>Other*</i>	7	0	6	0
<i>Not Stated</i>	1	0	2	0
<i>Abroad</i>	55	NA	38	NA
<b>TOTAL</b>	<b>7115</b>	<b>48</b>	<b>7182</b>	<b>43</b>

Source: Vital Statistics System, Ministry of Health 2011

\*Others Includes births on dhoani, ambulance, etc

Note: NA – data not available

**TABLE 6A: NUMBER AND PERCENTAGE OF BIRTHS BY MODE OF DELIVERY, 2007 - 2008**

Mode of Delivery	2007			2008		
	Total	Male	Female	Total	Male	Female
<i>Spontaneous Vaginal</i>	4185**	2141	2044	4309	2165	2143
	62.30%	61.65%	63.01%	60.32%	58.25%	62.57%
<i>Assisted Vaginal - Forceps</i>	59	37	22	90	58	32
	0.88%	1.07%	0.68%	1.26%	1.56%	0.93%
<i>Assisted Vaginal - Vacuum</i>	278	141	137	164	103	61
	4.14%	4.06%	4.22%	2.30%	2.77%	1.78%
<i>Breech</i>	47	27	20	28	14	14
	0.70%	0.78%	0.62%	0.39%	0.38%	0.41%
<i>Caesarean Section</i>	2057	1084	973	2439	1323	1115
	30.62%	31.21%	29.99%	34.14%	35.59%	32.55%
<i>Not stated</i>	91	43	48	114	54	60
	1.35%	1.24%	1.48%	1.60%	1.45%	1.75%
<b>TOTAL</b>	<b>6717**</b>	<b>3473</b>	<b>3244</b>	<b>7144</b>	<b>3717</b>	<b>3425</b>

Source: Vital Statistics System, Ministry of Health 2011

Note: The above table includes live and still births

\* Includes 1 baby with sex unknown \*\* Includes 2 live babies with sex unknown

**TABLE 6B: NUMBER AND PERCENTAGE OF BIRTHS BY MODE OF DELIVERY, 2009 - 2011**

Mode of Delivery	2009			2010			2011		
	Total	Male	Female	Total	Male	Female	Total	Male	Female
<b>Normal</b>	4314	2158	2156	4876	2481	2394	3914	2025	1889
	57.70%	56.54%	58.91%	68.07%	66.68%	69.57%	54.17%	52.98%	55.51%
<b>caesarian</b>	2741	1423	1318	1906	1026	880	2970	1599	1371
	36.65%	37.28%	36.01%	26.61%	27.57%	25.57%	41.11%	41.84%	40.29%
<b>Assisted Vaginal - Vacuum</b>	192	102	90	285	156	129	206	111	95
	2.57%	2.67%	2.46%	3.98%	4.19%	3.75%	2.85%	2.90%	2.79%
<b>Assisted Vaginal - Forceps</b>	87	54	33	54	32	22	73	46	27
	1.16%	1.41%	0.90%	0.75%	0.86%	0.64%	1.01%	1.20%	0.79%
<b>Other</b>	43	26	17	13	7	6	21	13	8
	0.58%	0.68%	0.46%	0.18%	0.19%	0.17%	0.29%	0.34%	0.24%
<b>Not stated</b>	100	54	46	29	19	10	41	28	13
	1.34%	1.41%	1.26%	0.40%	0.51%	0.29%	0.57%	0.73%	0.38%
<b>TOTAL</b>	<b>7477</b>	<b>3817</b>	<b>3660</b>	<b>7163</b>	<b>3721</b>	<b>3441</b>	<b>7225</b>	<b>3822</b>	<b>3403</b>

Source: Vital Statistics System, Ministry of Health 2011

Note: Mode of delivery categories - **Normal**: includes spontaneous vaginal, assisted vaginal (non-instrumental) and normal deliveries, **Caesarian**: includes unspecified, elective and emergency caesarean deliveries, **Others**: includes live spontaneous and induced abortion and breech deliveries and **Not stated** includes births occurred abroad, spontaneous abortions and births with mode of delivery not stated

**TABLE 7A: NUMBER AND PERCENTAGE OF LIVE AND STILLBIRTHS, MODE OF DELIVERY BY HEALTH FACILITY, 2010**

Place of Birth	Normal	Caesarean #	Vacuum	Forceps	Others ~	Not Stated	Total
<i>IGMH</i>	1935	700	32	2	6	0	2675
	27.01%	9.77%	0.45%	0.03%	0.08%	0.00%	37.34%
<i>Private Hospitals</i>	648	268	151	8	0	0	1075
	9.05%	3.74%	2.11%	0.11%	0.00%	0.00%	15.01%
<i>Hulhu Male' Hospital</i>	54	21	0	0	0	0	75
	0.75%	0.29%	0.00%	0.00%	0.00%	0.00%	1.05%
<i>Regional Hospitals</i>	1254	528	45	23	5	0	1855
	17.51%	7.37%	0.63%	0.32%	0.07%	0.00%	25.90%
<i>Atoll Hospitals</i>	679	369	57	20	2	0	1127
	9.48%	5.15%	0.80%	0.28%	0.03%	0.00%	15.73%
<i>Health Centers</i>	266	0	0	1	0	0	267
	3.71%	0.00%	0.00%	0.01%	0.00%	0.00%	3.73%
<i>Health Posts</i>	6	0	0	0	0	0	6
	0.08%	0.00%	0.00%	0.00%	0.00%	0.00%	0.08%
<i>Others *</i>	34	20	0	0	0	29	83
	0.47%	0.28%	0.00%	0.00%	0.00%	0.40%	1.16%
<b>TOTAL</b>	<b>4876</b>	<b>1906</b>	<b>285</b>	<b>54</b>	<b>13</b>	<b>29</b>	<b>7163</b>
	<b>68.07%</b>	<b>26.61%</b>	<b>3.98%</b>	<b>0.75%</b>	<b>0.18%</b>	<b>0.40%</b>	<b>100 %</b>

Source: Vital Statistics System, Ministry of Health 2011

\* Includes births occurred abroad, on dhoani, home, ambulance, not stated and others

# Includes emergency and unspecified caesareans

~ Includes induced and spontaneous abortion and breech deliveries

**TABLE 7B: NUMBER AND PERCENTAGE OF LIVE AND STILLBIRTHS, MODE OF DELIVERY BY HEALTH FACILITY, 2011**

Place of Birth	Normal	Caesarean #	Vacuum	Forceps	Others ~	Not Stated	Total
<b>IGMH</b>	1442	1130	36	0	16	0	<b>2624</b>
	19.96%	15.64%	0.50%	0.00%	0.22%	0.00%	<b>36.32%</b>
<b>Private Hospital</b>	684	496	94	18	0	0	<b>1292</b>
	9.47%	6.87%	1.30%	0.25%	0.00%	0.00%	<b>17.88%</b>
<b>Hulhu Male' Hospital</b>	54	44	0	0	0	0	<b>98</b>
	0.75%	0.61%	0.00%	0.00%	0.00%	0.00%	<b>1.36%</b>
<b>Regional Hospitals</b>	974	854	44	39	1	1	<b>1913</b>
	13.48%	11.82%	0.61%	0.54%	0.01%	0.01%	<b>24.48%</b>
<b>Atoll Hospitals</b>	542	445	32	16	2	0	<b>1037</b>
	7.50%	6.16%	0.44%	0.22%	0.03%	0.00%	<b>14.35%</b>
<b>Health Centers</b>	179	0	0	0	2	1	<b>182</b>
	2.48%	0.00%	0.00%	0.00%	0.03%	0.01%	<b>2.52%</b>
<b>Health Posts</b>	4	0	0	0	0	0	<b>4</b>
	0.06%	0.00%	0.00%	0.00%	0.00%	0.00%	<b>0.06%</b>
<b>Others *</b>	35	0	0	0	0	2	<b>37</b>
	0.48%	0.00%	0.00%	0.00%	0.00%	0.03%	<b>0.51%</b>
<b>ABROAD</b>	0	1	0	0	0	37	<b>38</b>
	0.00%	0.01%	0.00%	0.00%	0.00%	0.51%	<b>0.53%</b>
<b>TOTAL</b>	<b>3914</b>	<b>2970</b>	<b>206</b>	<b>73</b>	<b>21</b>	<b>41</b>	<b>7225</b>
	<b>54.17%</b>	<b>41.11%</b>	<b>2.85%</b>	<b>1.01%</b>	<b>0.29%</b>	<b>0.57%</b>	<b>100%</b>

Source: Vital Statistics System, Ministry of Health 2011

\* Includes, on dhoani, home, ambulance, not stated and others  
 # Includes emergency and unspecified caesareans  
 ~ Includes induced and spontaneous abortion and breech deliveries

**TABLE 8A: AVERAGE BIRTH WEIGHT BY SEX, 2007 - 2009**

Region		2007			2008			2009		
		Total Births	Total Births	Live Births	Still Births	Live Births	Still Births	Total Births	Live Births	Still Births
<b>Republic</b>	<i>Total</i>	3035	3040	3044	3419	3041	2381	3041	3048	2048
	<i>Male</i>	3077	3079	3085	2360	3082	2482	3076	3083	1982
	<i>Female</i>	2991	2998	3001	2512	2997	2252	3003	3010	2109
<b>Atolls</b>	<i>Total</i>	3051	3022	3026	2797	3058	2472	3052	3058	2193
	<i>Male</i>	3101	3063	3067	2638	3107	2703	3081	3086	1944
	<i>Female</i>	2997	2978	2981	2620	3004	2346	3021	3026	2354
<b>Male'</b>	<i>Total</i>	3017	3057	3062	2135	3022	2184	3063	3037	1915
	<i>Male</i>	3049	3095	3104	2064	3054	2294	3097	3081	2006
	<i>Female</i>	2984	3018	3021	2296	2989	2010	3028	2992	1798

Source: Vital Statistics System, Ministry of Health 2011

**TABLE 8B: AVERAGE BIRTH WEIGHT BY SEX, 2010 - 2011**

Region		2010			2011		
		Total Births	Live Births	Still Births	Total Births	Live Births	Still Births
<b>Republic</b>	<i>Total</i>	3047	3052	2226	3039	3045	2055
	<i>Male</i>	3090	3094	2259	3071	3088	2111
	<i>Female</i>	3000	3007	1862	3004	3009	1976
<b>Atolls</b>	<i>Total</i>	3058	3062	2575	3042	3048	2044
	<i>Male</i>	3103	3105	2943	3087	3097	1999
	<i>Female</i>	3009	3015	2140	2987	3004	2100
<b>Male'</b>	<i>Total</i>	3037	3044	1936	3038	3045	2062
	<i>Male</i>	3079	3085	2145	3058	3064	2187
	<i>Female</i>	2993	3000	1663	3018	3024	1876

Source: Vital Statistics System, Ministry of Health 2011

**TABLE 9: BIRTH WEIGHT BY CATEGORIES, 2007 - 2011**

Year		2007	2008	2009	2010	2011
<b>Republic</b>		<i>Number</i> %	<i>Number</i> %	<i>Number</i> %	<i>Number</i> %	<i>Number</i> %
<i>Low Birth Weight</i>	<i>(&lt;2500 grams)</i>	667 10.15%	687 9.87%	717 9.78%	697 9.83%	729 10.21
<i>Normal</i>	<i>( 2500-3999 grams)</i>	5713 86.92%	6063 87.09%	6398 87.31%	6170 87.02%	6214 86.99
<i>High Birth Weight</i>	<i>(≥4000 grams)</i>	193 2.94%	212 3.05%	213 2.91%	223 3.15%	200 2.80
<i>Not Stated</i>		4 0.06%	2 0.03%	95 1.28%	0 0.00%	39 0.54
<b>Atolls</b>						
<i>Low Birth Weight</i>	<i>(&lt;2500 grams)</i>	316 9.06%	307 8.49%	360 9.88%	268 8.25%	280 8.88
<i>Normal</i>	<i>( 2500-3999 grams)</i>	3037 87.09%	3192 88.32%	3170 87.02%	2858 87.97%	2778 88.08
<i>High Birth Weight</i>	<i>(≥4000 grams)</i>	134 3.84%	115 3.18%	113 3.10%	123 3.79%	96 3.04
<i>Not Stated</i>		3 0.09%	2 0.06%	95 2.54%	0 0.00%	2 0.06
<b>Male'</b>						
<i>Low Birth Weight</i>	<i>(&lt;2500 grams)</i>	351 11.37 %	380 11.35%	357 9.69%	422 11.07%	448 11.23
<i>Normal</i>	<i>( 2500-3999 grams)</i>	2676 86.71%	2871 85.75%	3228 87.60%	3289 86.30%	3436 86.16
<i>High Birth Weight</i>	<i>(≥4000 grams)</i>	59 1.91%	97 2.90%	100 2.71%	100 2.62%	104 2.61
<i>Not Stated</i>		1 0.03%	0 0.00%	0 0.00%	0 0.00%	0 0.00

Source: Vital Statistics System, Ministry of Health , 2011



**TABLE 10A: NUMBER AND PERCENTAGE OF LIVE BIRTHS BY BIRTH WEIGHT & BY SEX, 2010**

Weight (Grams)	Republic			Atolls			Male'			Abroad		
	Total	Male	Female	Total	Male	Female	Total	Male	Female	Total	Male	Female
	No.	No.	No.	No.	No.	No.	No.	No.	No.	No.	No.	No.
	%	%	%	%	%	%	%	%	%	%	%	%
<500	6	4	2	2	0	2	4	4	0	0	0	0
	0.08%	0.11%	0.06%	0.06%	0.00%	0.13%	0.10%	0.20%	0.00%	0.00%	0.00%	0.00%
500 – 999	23	15	8	11	6	5	10	7	3	2	2	0
	0.32%	0.41%	0.23%	0.34%	0.35%	0.32%	0.26%	0.36%	0.16%	3.64%	6.67%	0.00%
1000 – 1499	27	14	13	8	3	5	19	11	8	0	0	0
	0.38%	0.38%	0.38%	0.25%	0.18%	0.32%	0.50%	0.56%	0.43%	0.00%	0.00%	0.00%
1500 – 1999	107	47	60	30	12	18	75	33	42	2	2	0
	1.50%	1.27%	1.75%	0.92%	0.71%	1.16%	1.97%	1.68%	2.28%	3.64%	6.67%	0.00%
2000 – 2499	534	241	293	217	100	117	314	139	175	3	2	1
	7.51%	6.52%	8.56%	6.68%	5.90%	7.53%	8.24%	7.06%	9.50%	5.45%	6.67%	4.00%
2500 – 2999	2310	1114	1196	1042	500	542	1264	613	651	4	1	3
	32.47%	30.16%	34.96%	32.07%	29.50%	34.88%	33.17%	31.13%	35.34%	7.27%	3.33%	12.00%
3000 – 3499	2790	1480	1310	1335	728	607	1443	748	695	12	4	8
	39.21%	40.06%	38.29%	41.09%	42.95%	39.06%	37.86%	37.99%	37.73%	21.82%	13.33%	32.00%
3500 – 3999	1070	623	447	481	267	214	582	353	229	7	3	4
	15.04%	16.87%	13.07%	14.80%	15.75%	13.77%	15.27%	17.93%	12.43%	12.73%	10.00%	16.00%
4000 – 4499	189	122	67	110	72	38	79	50	29	0	0	0
	2.66%	3.30%	1.96%	3.39%	4.25%	2.45%	2.07%	2.54%	1.57%	0.00%	0.00%	0.00%
4500 – 4999	31	18	13	12	7	5	19	11	8	0	0	0
	0.44%	0.49%	0.38%	0.37%	0.41%	0.32%	0.50%	0.56%	0.43%	0.00%	0.00%	0.00%
>5000	3	0	3	1	0	1	2	0	2	0	0	0
	0.04%	0.00%	0.09%	0.03%	0.00%	0.06%	0.05%	0.00%	0.11%	0.00%	0.00%	0.00%
Not Stated	25	16	9	0	0	0	0	0	0	25	16	9
	0.35%	0.43%	0.26%	0.00%	0.00%	0.00%	0.00%	0.00%	0.00%	45.45%	53.33%	36.00%
<b>TOTAL</b>	<b>7115</b>	<b>3694</b>	<b>3421</b>	<b>3249</b>	<b>1695</b>	<b>1554</b>	<b>3811</b>	<b>1969</b>	<b>1842</b>	<b>55</b>	<b>30</b>	<b>25</b>
	<b>100%</b>	<b>51.92%</b>	<b>48.08%</b>	<b>100%</b>	<b>52.17%</b>	<b>47.83%</b>	<b>100%</b>	<b>51.67%</b>	<b>48.33%</b>	<b>100%</b>	<b>54.55%</b>	<b>45.45%</b>

Source: Vital Statistics System, Ministry of Health 2011

**TABLE 10B: NUMBER AND PERCENTAGE OF LIVE BIRTHS BY BIRTH WEIGHT & BY SEX, 2011**

Weight (Grams)	Republic			Atolls			Male'			Abroad		
	Total	Male	Female	Total	Male	Female	Total	Male	Female	Total	Male	Female
	No.	No.	No.	No.	No.	No.	No.	No.	No.	No.	No.	No.
	%	%	%	%	%	%	%	%	%	%	%	%
<500	18	7	11	5	1	4	13	6	7	0	0	0
	0.25	0.18	0.32	0.16	0.06	0.28	0.33	0.29	0.36	0.00	0.00	0.00
500 – 999	20	13	7	7	7	0	13	6	7	0	0	0
	0.28	0.34	0.21	0.22	0.41	0.00	0.33	0.29	0.36	0.00	0.00	0.00
1000 – 1499	28	16	12	6	2	4	22	14	8	0	0	0
	0.39	0.42	0.35	0.19	0.12	0.28	0.55	0.68	0.41	0.00	0.00	0.00
1500 – 1999	114	64	50	37	23	14	76	40	36	1	1	0
	1.59	1.69	1.48	1.17	1.33	0.98	1.91	1.95	1.86	2.63	3.85	0.00
2000 – 2499	549	267	282	225	98	127	324	169	155	0	0	0
	7.64	7.03	8.33	7.13	5.69	8.86	8.12	8.25	7.99	0.00	0.00	0.00
2500 – 2999	2310	1097	1213	1049	505	544	1261	592	669	0	0	0
	32.16	28.89	35.83	33.24	29.31	37.96	31.62	28.91	34.48	0.00	0.00	0.00
3000 – 3499	2818	1540	1278	1247	720	527	1571	820	751	0	0	0
	39.24	40.56	37.75	39.51	41.79	36.78	39.39	40.04	38.71	0.00	0.00	0.00
3500 – 3999	1086	644	442	482	300	182	604	344	260	0	0	0
	15.12	16.96	13.06	15.27	17.41	12.70	15.15	16.80	13.40	0.00	0.00	0.00
4000 – 4499	178	112	66	84	58	26	94	54	40	0	0	0
	2.48	2.95	1.95	2.66	3.37	1.81	2.36	2.64	2.06	0.00	0.00	0.00
4500 – 4999	18	9	9	10	7	3	8	2	6	0	0	0
	0.25	0.24	0.27	0.32	0.41	0.21	0.20	1.10	0.31	0.00	0.00	0.00
>5000	4	2	2	2	1	1	2	1	1	0	0	0
	0.06	0.05	0.06	0.06	0.06	0.07	0.05	0.05	0.05	0.00	0.00	0.00
Not Stated	39	26	13	2	1	1	0	0	0	37	25	12
	0.54	0.68	0.38	0.06	0.06	0.07	0.00	0.00	0.00	97.37	96.15	100.00
TOTAL	7182	3797	3385	3156	1723	1433	3988	2048	1940	38	26	12
	100	52.87	47.13	100	54.59	45.41	100	51.35	48.65	100	68.42	31.58

Source: Vital Statistics System, Ministry of Health 2011

**TABLE 11A: NUMBER AND PERCENTAGES OF LIVE & STILL BIRTHS BY TYPE OF HEALTH PROFESSIONAL ATTENDED- 2010 - 2011**

Health Professional	2010				2011			
	Republic	Male'	Atolls	Abroad	Republic	Male'	Atolls	Abroad
	Number	Number	Number	Number	Number	Number	Number	Number
	%	%	%	%	%	%	%	%
<b>LIVE BIRTHS</b>								
<i>Doctor</i>	4771	2253	2518	NA	5171	2567	2602	2
	67.04%	59.12%	77.50%	0.00%	72.00	64.37%	82.45%	5.26%
<i>Nurse</i>	2216	1557	659	NA	1926	1419	507	0
	31.15%	40.86%	20.28%	0.00%	26.82%	35.58%	16.06%	0.00%
<i>Community Health Worker</i>	13	0	13	NA	0	0	0	0
	0.18%	0.00%	0.40%	0.00%	0.00%	0.00%	0.00%	0.00%
<i>Family Health Worker</i>	5	0	5	NA	1	0	1	0
	0.07%	0.00%	0.15%	0.00%	0.01%	0.00%	0.03%	0.00%
<i>Traditional Birth Attendant (Foolhuma)</i>	50	0	50	NA	42	0	42	0
	0.70%	0.00%	1.54%	0.00%	0.58%	0.00%	1.33%	0.00%
<i>Other</i>	1	0	1	NA	1	0	1	0
	0.01%	0.00%	0.03%	0.00%	0.01%	0.00%	0.03%	0.00%
<i>Not stated</i>	59	1	3	55	41	2	3	36
	0.83%	0.03%	0.09%	100%	0.57%	0.05%	0.10%	94.74%
<b>TOTAL</b>	<b>7115</b>	<b>3811</b>	<b>3249</b>	<b>55</b>	<b>7182</b>	<b>3988</b>	<b>3156</b>	<b>38</b>
	<b>100%</b>	<b>100%</b>	<b>100%</b>	<b>100%</b>	<b>100%</b>	<b>100%</b>	<b>100%</b>	<b>100%</b>
<b>STILL BIRTHS</b>								
<i>Doctor</i>	30	9	21	0	21	15	6	0
	62.50%	39.13%	84.00%	0.00%	48.84	83.33	24.00	0.00%
<i>Nurse</i>	16	14	2	0	22	3	19	0
	33.33%	60.87%	8.00%	0.00%	51.16	16.67	76.00	0.00%
<i>Community Health Worker</i>	0	0	0	0	0	0	0	0
	0.00%	0.00%	0.00%	0.00%	0.00%	0.00%	0.00%	0.00%
<i>Family Health Worker</i>	0	0	0	0	0	0	0	0
	0.00%	0.00%	0.00%	0.00%	0.00%	0.00%	0.00%	0.00%
<i>Traditional Birth Attendant (Foolhuma)</i>	1	0	1	0	0	0	0	0
	2.08%	0.00%	4.00%	0.00%	0.00%	0.00%	0.00%	0.00%
<i>Other</i>	0	0	0	0	0	0	0	0
	0.00%	0.00%	0.00%	0.00%	0.00%	0.00%	0.00%	0.00%
<i>Not stated</i>	1	0	1	0	0	0	0	0
	2.08%	0.00%	4.00%	0.00%	0.00%	0.00%	0.00%	0.00%
<b>TOTAL</b>	<b>48</b>	<b>23</b>	<b>25</b>	<b>0</b>	<b>43</b>	<b>18</b>	<b>25</b>	<b>0</b>
	<b>100%</b>	<b>100%</b>	<b>100%</b>	<b>0.00%</b>	<b>100%</b>	<b>100%</b>	<b>100%</b>	<b>0.00%</b>

Source: Vital Statistics System, Ministry of Health, 2011

NA – Data is not available.

**TABLE 11B: NUMBER AND PERCENTAGES OF LIVE AND STILL BIRTHS BY TYPE OF HEALTH PROFESSIONAL ATTENDED- 2010 – 2011... (CONTINUED)**

Health Professional	2010				2011			
	Republic	Male'	Atolls	Abroad	Republic	Male'	Atolls	Abroad
	Number	Number	Number	Number	Number	Number	Number	Number
	%	%	%	%	%	%	%	%
	<b>ALL BIRTHS</b>							
<i>Doctor</i>	4801	2262	2539	NA	5192	2573	2617	2
	67.02%	59.00%	77.55%	0.00%	71.86%	64.12%	82.45%	5.26
<i>Nurse</i>	2232	1571	661	NA	1948	1438	510	0
	31.16%	40.98%	20.19%	0.00%	26.96%	35.83%	16.07%	0.00%
<i>Community Health Worker</i>	13	0	13	NA	0	0	0	0
	0.18%	0.00%	0.40%	0.00%	0.00%	0.00%	0.00%	0.00%
<i>Family Health Worker</i>	5	0	5	NA	1	0	1	0
	0.07%	0.00%	0.15%	0.00%	0.01%	0.00%	0.03%	0.00%
<i>Traditional Birth Attendant (Foolhuma)</i>	2020	2842	1	NA	42	0	42	0
	54.48%	77.38%	1.04%	0.00%	0.58%	0.00%	1.32%	0.00%
<i>Other</i>	1648	737	0	NA	1	0	1	0
	0.01%	0.00%	0.03%	0.00%	0.01%	0.00%	0.03%	0.00%
<i>Not stated</i>	60	1	4	55	41	2	3	36
	0.84%	0.03%	0.12%	100.00%	0.57%	0.05%	0.09%	94.74%
<b>TOTAL</b>	<b>7163</b>	<b>3834</b>	<b>3274</b>	<b>55</b>	<b>7225</b>	<b>4013</b>	<b>3174</b>	<b>38</b>
	<b>100%</b>	<b>100%</b>	<b>100%</b>	<b>100%</b>	<b>100%</b>	<b>100%</b>	<b>100%</b>	<b>100%</b>

Source: Vital Statistics System, Ministry of Health 2011

**TABLE 12: NUMBER AND PERCENTAGE OF LIVE BIRTHS BY AGE OF MOTHER, 2009 – 2011**

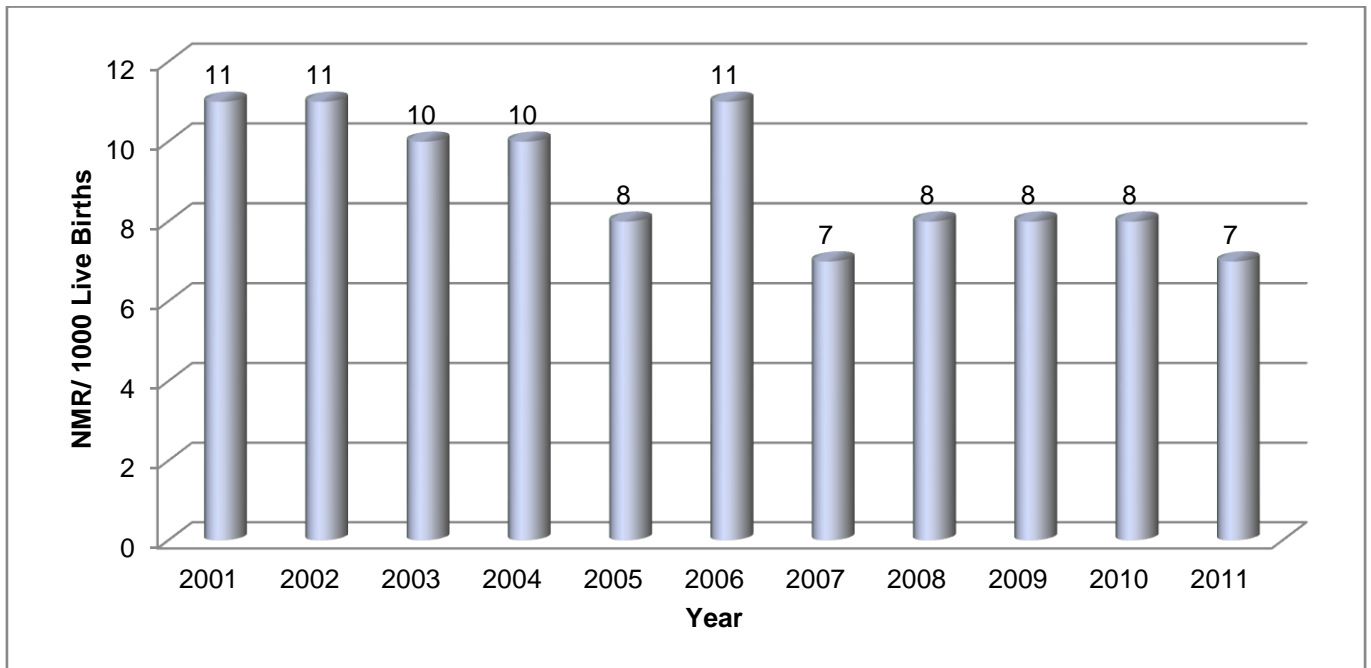
Age group (yrs)	2009	2010	2011
	Number	Number	Number
	%	%	%
<b>10-14</b>	1	1	0
	0.01%	0.01%	0.00%
<b>15-19</b>	343	293	277
	4.62%	4.12%	3.9%
<b>20-24</b>	2677	2480	2305
	36.06%	34.85%	32.1%
<b>25-29</b>	2281	2274	2415
	30.73%	31.965	33.6%
<b>30-34</b>	1313	1257	1367
	17.69%	17.66%	19.0%
<b>35-39</b>	578	610	679
	7.79%	8.59%	9.5%
<b>40-44</b>	133	159	124
	1.79%	2.23%	1.7%
<b>45-49</b>	9	14	8
	0.12%	0.20%	0.1%
<b>&gt;50</b>	0	0	3
	0.00%	0.00%	0.04%
<b>Not Stated</b>	88	27	4
	1.19%	0.38%	0.1%
<b>TOTAL</b>	<b>7423</b>	<b>7115</b>	<b>7182</b>
	<b>100%</b>	<b>100%</b>	<b>100%</b>

Source: Vital Statistics System, Ministry of Health, 2011

# *Mortality*

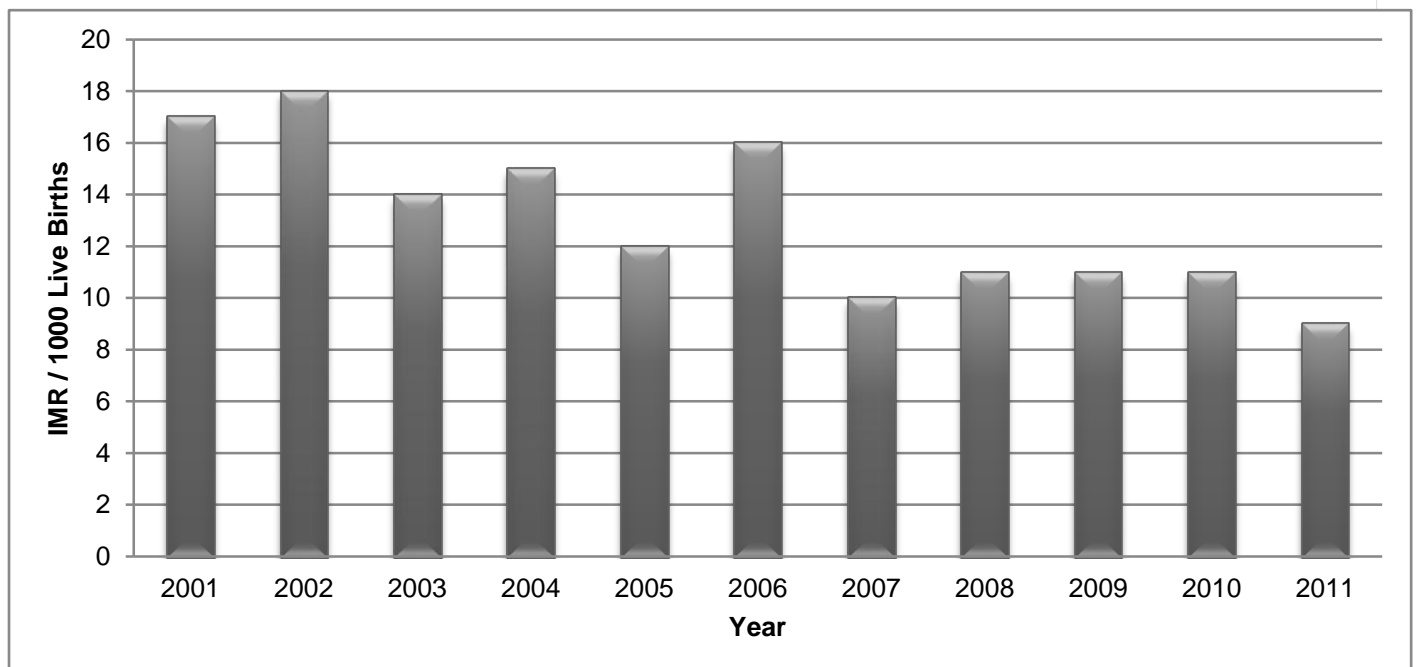
## MORTALITY

**GRAPH 6: NEONATAL MORTALITY RATE PER 1000 LIVE BIRTHS 2001 – 2011**



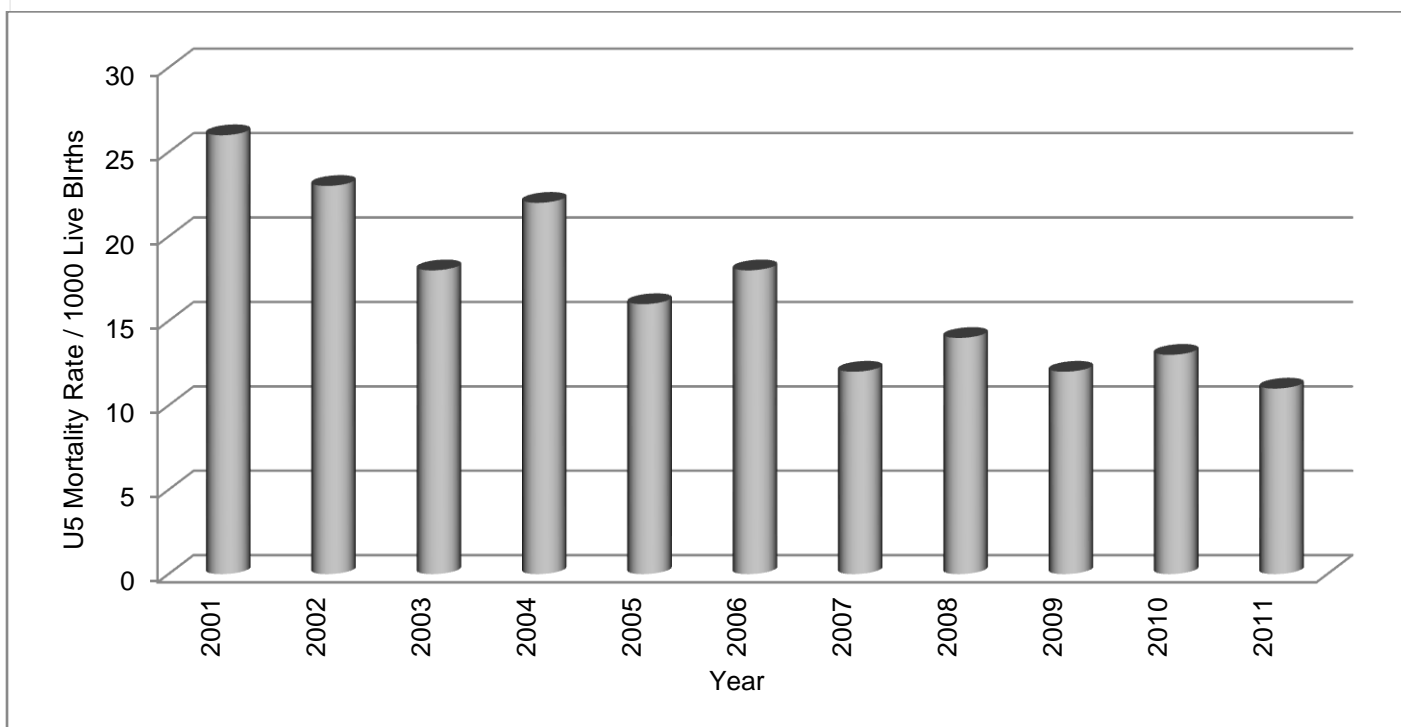
Source: Vital Statistics System, Ministry of Health, 2011

**GRAPH 7: INFANT MORTALITY RATE PER 1000 LIVE BIRTHS 2001 - 2011**



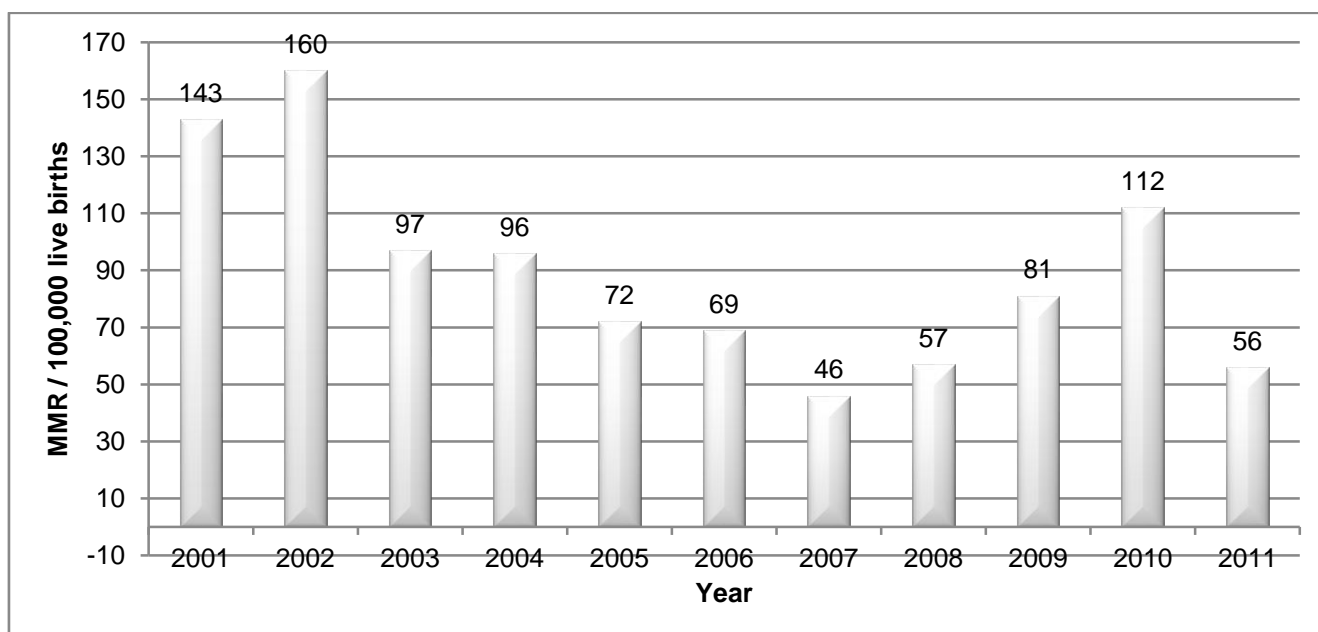
Source: Vital Statistics System, Ministry of Health, 2011

**GRAPH 8: UNDER FIVE MORTALITY RATE PER 1000 LIVE BIRTHS 2001 - 2011**



Source: Vital Statistics System, Ministry of Health, 2011

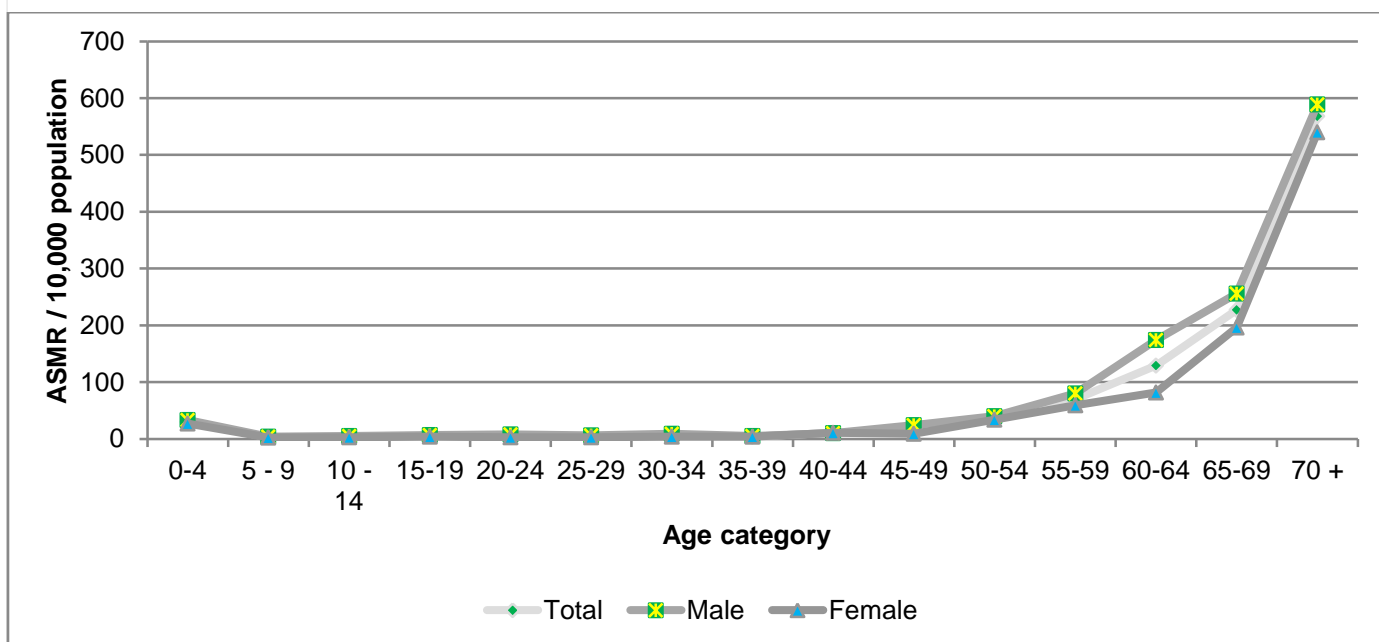
**GRAPH 9: MATERNAL MORTALITY RATIO PER 100,000 LIVE BIRTHS 2001 - 2011**



Source: Vital Statistics System, Ministry of Health, 2011

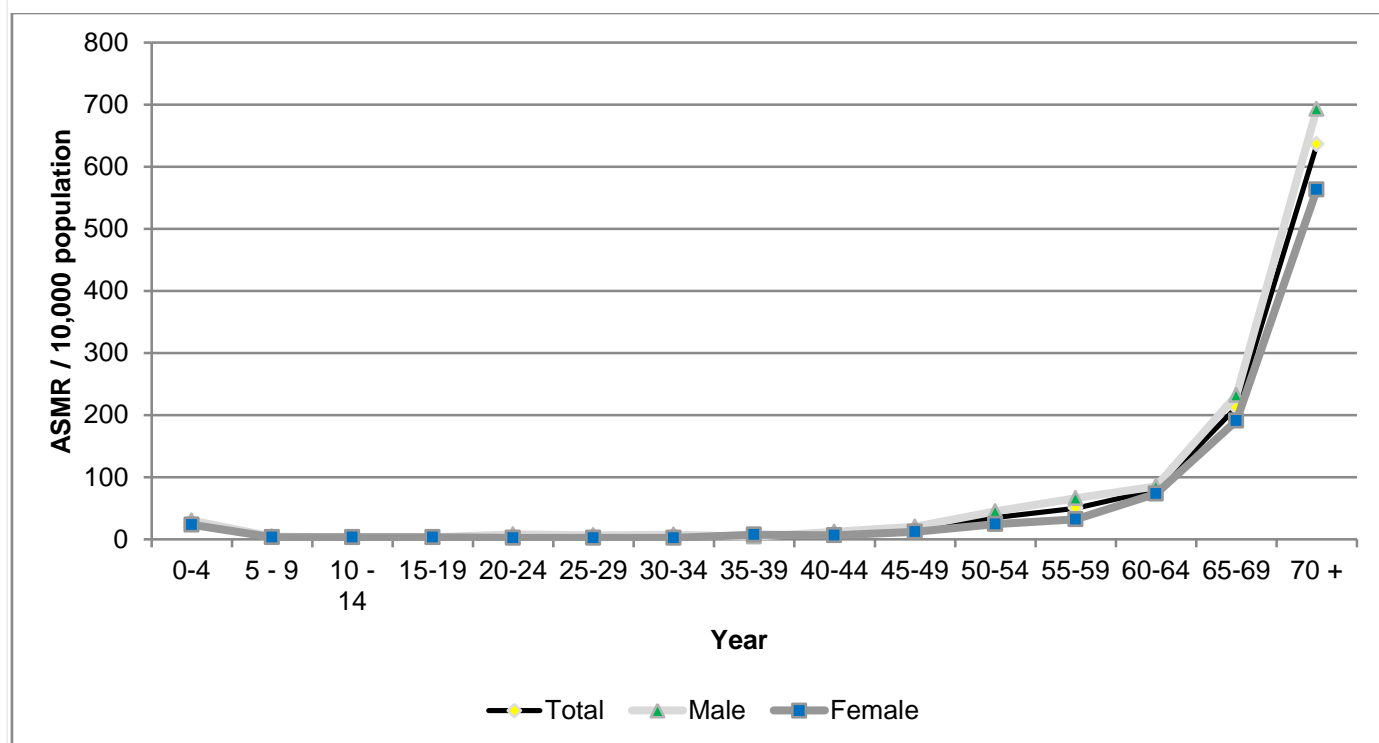


**GRAPH 10: AGE SPECIFIC MORTALITY RATE PER 10,000 POPULATION, 2010**



Source: Vital Statistics System, Ministry of Health, 2011

**GRAPH 11: AGE SPECIFIC MORTALITY RATE PER 10,000 POPULATION, 2011**



Source: Vital Statistics System, Ministry of Health, 2011

**TABLE 13: CRUDE DEATH RATE PER 1000 POPULATION, 2001 - 2011**

Year	Republic			Atolls			Male'		
	Total	Male	Female	Total	Male	Female	Total	Male	Female
2001	4	4	3	4	4	4	4	4	3
2002	4	5	3	4	4	3	5	5	4
2003	4	4	3	3	4	3	4	5	3
2004	3	4	3	3	4	3	4	4	3
2005	3	4	3	3	4	2	4	5	4
2006 *	4	4	3	4	4	3	3	4	3
2007	4	4	3	4	5	3	4	4	3
2008	3	4	3	3	4	3	4	4	3
2009	4	4	3						
2010	3	4	3						
2011	3	4	3						

Source: Vital Statistics System, Ministry of Health, 2011

\* CDR calculated using the Census 2006 population, for the rest of the years CDR based on projected mid-year population  
 Note: CDR not calculated for Atolls and Male' separately for 2009 and 2010

**TABLE 14: STILL BIRTH RATE PER 1000 LIVE BIRTHS, 2001 - 2011**

Year	Republic			Atolls			Male'		
	Total	Male	Female	Total	Male	Female	Total	Male	Female
2001	17	17	17	17	16	19	16	18	14
2002	11	10	12	12	9	15	9	11	8
2003	11	11	11	13	15	12	8	5	11
2004	9	8	10	9	7	11	9	9	9
2005	7	7	8	10	9	10	5	5	6
2006	10	12	8	10	10	10	10	13	6
2007	9	10	8	11	11	11	7	9	5
2008	8	7	9	6	5	8	10	10	10
2009	7	8	5	8	9	7	6	8	4
2010	7	7	6	8	9	7	6	6	5
2011	7	7	6	7	8	7	6	6	6

Source: Vital Statistics System, Ministry of Health, 2011

**TABLE 15: INFANT MORTALITY RATE PER 1000 LIVE BIRTHS BY SEX, 2001 - 2011**

Year	Republic			Atolls			Male'		
	Total	Male	Female	Total	Male	Female	Total	Male	Female
2001	17	17	18	19	19	20	13	13	14
2002	18	19	16	19	18	21	15	21	9
2003	14	15	13	18	17	18	8	13	3
2004	15	16	13	18	17	19	10	14	6
2005	12	11	13	12	14	10	12	8	16
2006	16	18	13	18	21	15	13	14	12
2007	10	14	6	11	15	6	9	12	6
2008	11	10	11	10	9	11	12	12	12
2009	11	11	11	8	7	9	14	16	13
2010	11	12	10	10	9	12	11	15	7
2011	9	10	8	6	8	5	10	10	11

Source: Vital Statistics System, Ministry of Health, 2011

**TABLE 16: UNDER FIVE MORTALITY RATE PER 1000 LIVE BIRTHS BY SEX, 2001 - 2011**

Year	Republic			Atolls			Male'		
	Total	Male	Female	Total	Male	Female	Total	Male	Female
2001	26	27	25	30	32	29	17	18	16
2002	23	22	23	26	21	31	18	24	11
2003	18	22	15	24	27	21	10	14	4
2004	22	23	21	30	28	31	11	16	7
2005	16	14	17	18	18	17	13	10	18
2006	18	21	16	22	25	19	14	16	12
2007	12	15	8	13	17	9	10	13	6
2008	14	13	14	14	13	16	13	14	12
2009	12	12	12	10	8	11	15	17	13
2010	13	14	11	14	12	15	11	15	7
2011	11	12	10	10	12	8	11	11	12

Source: Vital Statistics System, Ministry of Health, 2011

Note: Under five mortality can be affected by slightly lower number of Live births compared to number of live births in 2009. The lower number may be due to the fact that we have not received all the births occurred abroad.

**TABLE 17: MATERNAL MORTALITY RATIO PER 100,000 LIVE BIRTHS, 2001 - 2011**

Year	Number of deaths	MMR per 100,000 live births
2001	7	143
2002	8	160
2003	5	97
2004	5	96
2005	4	72
2006	4	69
2007	3	46
2008	4	57
2009	6	81
2010	8	112
2011	4	56

Source: Vital Statistics System, Ministry of Health, 2011

**TABLE 18: NEONATAL DEATH RATE PER 1000 LIVE BIRTHS, 2001 - 2011**

Year	Early Neonatal Death Rate (0-6 Days)			Late Neonatal Death Rate (7-27 days)			Neonatal Death Rate (0-27 days)		
	Total	Male'	Atolls	Total	Male'	Atolls	Total	Male'	Atolls
2001	8	7	9	3	4	3	11	10	12
2002	9	9	9	2	2	2	11	11	12
2003	9	3	18	1	1	1	10	3	19
2004	9.01	6.06	11.07	0.96	1.40	0.65	9.97	7.46	11.73
2005	7.22	7.73	6.82	1.08	0.41	1.62	8.31	8.14	8.44
2006	8.75	7.02	10.26	2.75	3.69	1.92	11.50	10.71	12.18
2007	6.23	5.18	7.16	0.91	1.62	0.29	7.15	6.80	7.45
2008	5.89	5.38	6.36	2.15	2.99	1.38	8.04	8.36	7.74
2009	6.87	9.5	4.28	0.54	1.09	0.00	7.95	11.67	4.28
2010	6.18	6.3	6.16	1.97	2.89	0.62	8.15	9.18	6.77
2011	5.71	6.52	4.12	1.11	1.76	0.00	6.82	8.27	4.12

Source: Vital Statistics System, Ministry of Health, 2011

**TABLE 19: PERINATAL AND POSTNATAL DEATH RATE PER 1000 LIVE BIRTHS, 2001 - 2011**

Year	Perinatal Death Rate (Neonatal deaths + Still Births)			Post Neonatal Death Rate (28-364 days)			Infant Mortality Rate (0-365 days)		
	Total	Male'	Atolls	Total	Male'	Atolls	Total	Male'	Atolls
2001	28	26	29	6	3	8	17	13	19
2002	21	18	23	6	4	8	18	15	19
2003	21	8	41	4	2	9	14	8	18
2004	19	17	21	5	2	6	15	10	18
2005	16	13	18	4	4	4	12	12	12
2006	21	20	22	4	3	6	16	13	18
2007	16	14	18	3	2	3	10	9	11
2008	16	19	14	3	3	2	11	12	10
2009	15	18	12	3	2	3	11	14	8
2010	15	15	15	3	2	3	11	11	10
2011	13	14	11	2	2	2	9	10	6

Source: Vital Statistics System, Ministry of Health, 2011

**TABLE 20: AGE SPECIFIC MORTALITY RATE PER 10,000 POPULATION, 2009 - 2011**

Year	2009			2010			2011		
	Total	Total	Total	Total	Male	Female	Total	Male	Female
0-4	32	32	32	30	33	27	26	30	23
5-9	3	3	3	3	4	2	3	4	3
10-14	5	5	5	4	5	3	3	3	3
15-19	3	3	3	5	7	4	3	3	3
20-24	5	5	5	5	8	3	5	8	2
25-29	6	6	6	4	6	3	4	6	2
30-34	7	7	7	6	9	4	5	7	2
35-39	4	4	4	4	5	4	6	4	7
40-44	14	14	14	11	10	11	9	12	6
45-49	20	20	20	17	24	9	16	20	12
50-54	40	40	40	37	40	34	35	45	24
55-59	63	63	63	70	80	59	50	66	32
60-64	80	80	80	129	174	82	79	85	73
65-69	278	278	278	227	256	196	212	232	191
70 +	655	655	655	568	589	540	636	693	563

Source: Vital Statistics System, Ministry of Health, 2011

**TABLE 21: TOTAL NUMBER OF DEATHS BY SEX, 2001 - 2011**

Year	Republic			Atolls			Male'		
	Total	Male	Female	Total	Male	Female	Total	Male	Female
2001	1081	610	471	793	442	351	288	168	120
2002	1113	656	457	766	442	318	347	208	139
2003	1026	591	435	729	410	319	297	181	116
2004	1015	582	433	721	406	315	294	176	118
2005	1027	615	412	700	431	269	327	184	143
2006	1084	649	435	730	438	292	354	211	143
2007	1123	687	436	751	465	286	372	222	150
2008	1070	629	441	680	400	280	390	229	161
2009	1163	675	488	458	265	193	179	108	71
2010	1105	660	445	611	356	255	458	279	179
2011	1137	686	451	615	381	234	468	272	196

Source: Vital Statistics System, Ministry of Health, 2011

Note: republic totals include deaths occurred abroad

**TABLE 22A: TOTAL NUMBER OF DEATHS BY AGE, 2007 - 2009**

Year	2007			2008			2009		
	Total	Male	Female	Total	Male	Female	Total	Male	Female
<1	66	47	19	76	38	38	81	42	39
1-4	10	5	5	20	10	10	10	5	5
5-9	9	5	4	12	6	6	8	3	5
10-14	13	7	6	11	7	4	16	11	5
15-19	11	6	5	19	14	5	12	9	3
20-24	19	15	4	24	14	10	18	11	7
25-29	15	12	3	7	4	3	19	13	6
30-34	13	6	7	20	12	8	15	10	5
35-39	15	11	4	14	9	5	8	2	6
40-44	25	15	10	17	7	10	24	16	8
45-49	29	19	10	35	22	13	31	15	16
50-54	35	17	18	38	27	11	46	24	22
55-59	33	17	16	41	25	16	42	28	14
60-64	81	44	37	63	36	27	44	27	17
65-69	148	93	55	124	71	53	147	86	65
70+	603	368	235	549	327	222	637	373	265
Not Stated	0	0	0	0	0	0	0	0	0
<b>TOTAL</b>	<b>1123</b>	<b>687</b>	<b>436</b>	<b>1070</b>	<b>629</b>	<b>441</b>	<b>1,163</b>	<b>675</b>	<b>488</b>

Source: Vital Statistics System, Ministry of Health, 2011

**TABLE 22B: TOTAL NUMBER OF DEATHS BY AGE, 2010 - 2011**

Year	2010			2011		
	Total	Male	Female	Total	Male	Female
<1	78	45	33	65	37	28
1-4	11	5	6	16	9	7
5-9	8	6	2	9	5	4
10-14	12	8	4	10	5	5
15-19	21	14	7	11	5	6
20-24	21	16	5	22	17	5
25-29	15	10	5	14	10	4
30-34	15	10	5	12	9	3
35-39	9	5	4	12	4	8
40-44	19	9	10	17	11	6
45-49	26	19	7	26	16	10
50-54	47	26	21	47	31	16
55-59	50	30	20	39	27	12
60-64	72	50	22	45	25	20
65-69	120	69	51	110	61	49
70+	581	338	243	682	414	268
Not Stated	0	0	0	0	0	0
<b>TOTAL</b>	<b>1,105</b>	<b>660</b>	<b>445</b>	<b>1137</b>	<b>686</b>	<b>451</b>

*Source: Vital Statistics System, Ministry of Health, 2011*

**TABLE 23A: TWENTY LEADING CAUSES OF DEATH FOR ALL AGES, 2010**

ICD	CAUSE	MALE	FEMALE	TOTAL
I10–I15	Hypertensive diseases	127	82	209
I30–I52	Other forms of heart disease	65	51	116
I20–I25	Ischaemic heart diseases	67	21	88
R95–R99	Ill-defined and unknown causes of mortality	47	29	76
I60–I69	Cerebrovascular diseases	31	25	56
C00–C75	Malignant neoplasms, stated or presumed to be primary, of specified sites, except of lymphoid, haematopoietic and related tissue	31	22	53
J40–J47	Chronic lower respiratory diseases	18	33	51
N17–N19	Renal failure	18	16	34
E10–E14	Diabetes mellitus	14	15	29
W00–X59	Other external causes of accidental injury	23	6	29
C76–C80	Malignant neoplasms of ill-defined, secondary and unspecified sites	16	12	28
P20–P29	Respiratory and cardiovascular disorders specific to the perinatal period	13	13	26
R50–R69	General symptoms and signs	12	12	24
R00–R09	Symptoms and signs involving the circulatory and respiratory systems	17	4	21
A30–A49	Other bacterial diseases	12	6	18
J80–J84	Other respiratory diseases principally affecting the interstitium	12	5	17
K70–K77	Diseases of liver	12	5	17
J95–J99	Other diseases of the respiratory system	7	8	15
P05–P08	Disorders related to length of gestation and fetal growth	10	5	15
E70–E90	Metabolic disorders	7	5	12

*Vital Statistics System, Ministry of Health, 2011*



**TABLE 23B: TWENTY LEADING CAUSES OF DEATH FOR ALL AGES, 2011**

ICD	CAUSE	MALE	FEMALE	TOTAL
I30–I52	Other forms of heart disease	76	54	130
R95–R99	Ill-defined and unknown causes of mortality	83	37	120
I20–I25	Ischaemic heart diseases	82	31	113
I60–I69	Cerebrovascular diseases	72	36	108
J40–J47	Chronic lower respiratory diseases	39	41	80
I10–I15	Hypertensive diseases	36	43	79
C00–C75	Malignant neoplasms, stated or presumed to be primary, of specified sites, except of lymphoid, haematopoietic and related tissue	50	28	78
W00–X59	Other external causes of accidental injury	24	13	37
E10–E14	Diabetes mellitus	18	18	36
N17–N19	Renal failure	16	12	28
R50–R69	General symptoms and signs	14	10	24
P20–P29	Respiratory and cardiovascular disorders specific to the perinatal period	12	7	19
R00–R09	Symptoms and signs involving the circulatory and respiratory systems	13	5	18
J95–J99	Other diseases of the respiratory system	13	4	17
C76–C80	Malignant neoplasms of ill-defined, secondary and unspecified sites	6	10	16
J80–J84	Other respiratory diseases principally affecting the interstitium	6	9	15
I26–I28	Pulmonary heart disease and diseases of pulmonary circulation	8	6	14
A30–A49	Other bacterial diseases	4	8	12
K90–K93	Other diseases of the digestive system	6	6	12
A90–A99	Arthropod-borne viral fevers and viral haemorrhagic fevers	9	2	11

Source: Vital Statistics System, Ministry of Health, 2011

**TABLE 24: DEATHS BY AGE GROUP FOR THALASSAEMICS, 2001 - 2011**

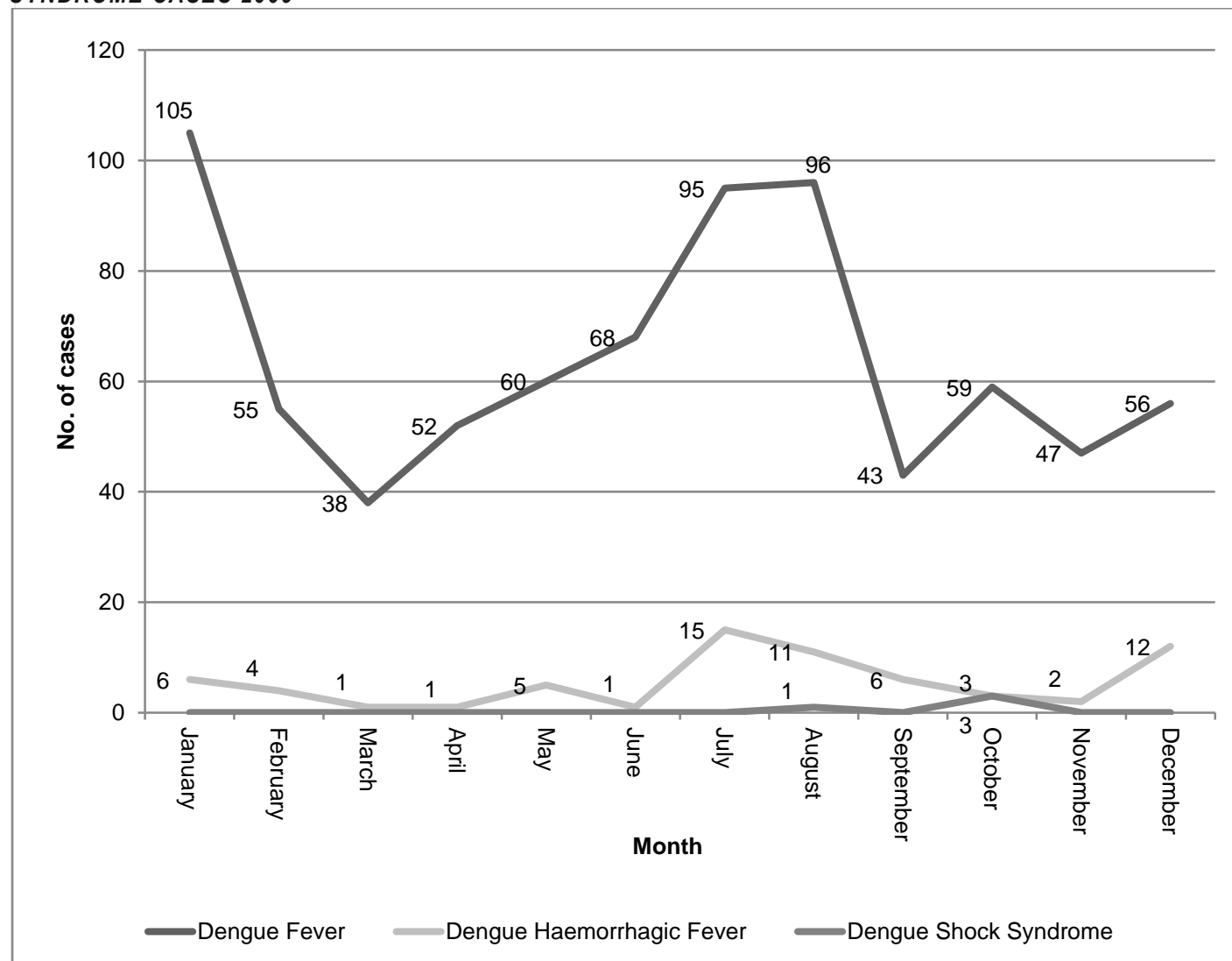
Year	6-11 months	1 – 4 years	5-9 years	10-14 years	15 years	Total
2001	1	7	0	0	2	<b>10</b>
2002	0	4	0	2	3	<b>9</b>
2003	0	1	1	1	0	<b>3</b>
2004	0	0	2	0	1	<b>3</b>
2005	0	0	0	1	0	<b>1</b>
2006	0	0	0	2	4	<b>6</b>
2007	0	0	0	3	5	<b>8</b>
2008	0	1	1	2	4	<b>8</b>
2009	0	0	1	2	2	<b>5</b>
2010	0	0	1	1	3	<b>5</b>
2011	1	0	0	2	4	<b>7</b>

Source: National Thalassaemia Centre, 2011

# *Morbidity*

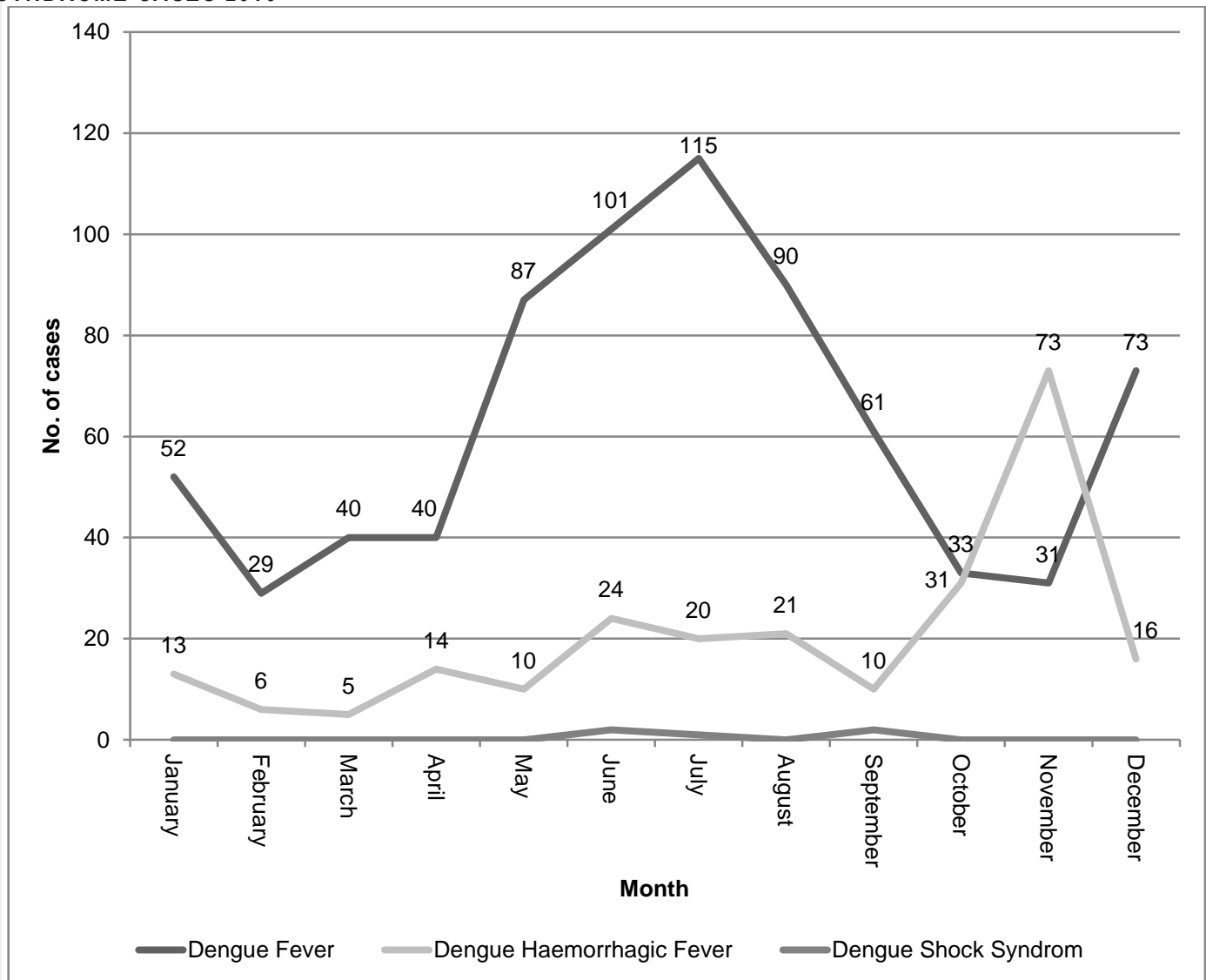
## MORBIDITY

**GRAPH 12: NUMBER OF DENGUE FEVER, DENGUE HAEMORRHAGIC FEVER & DENGUE SHOCK SYNDROME CASES 2009**



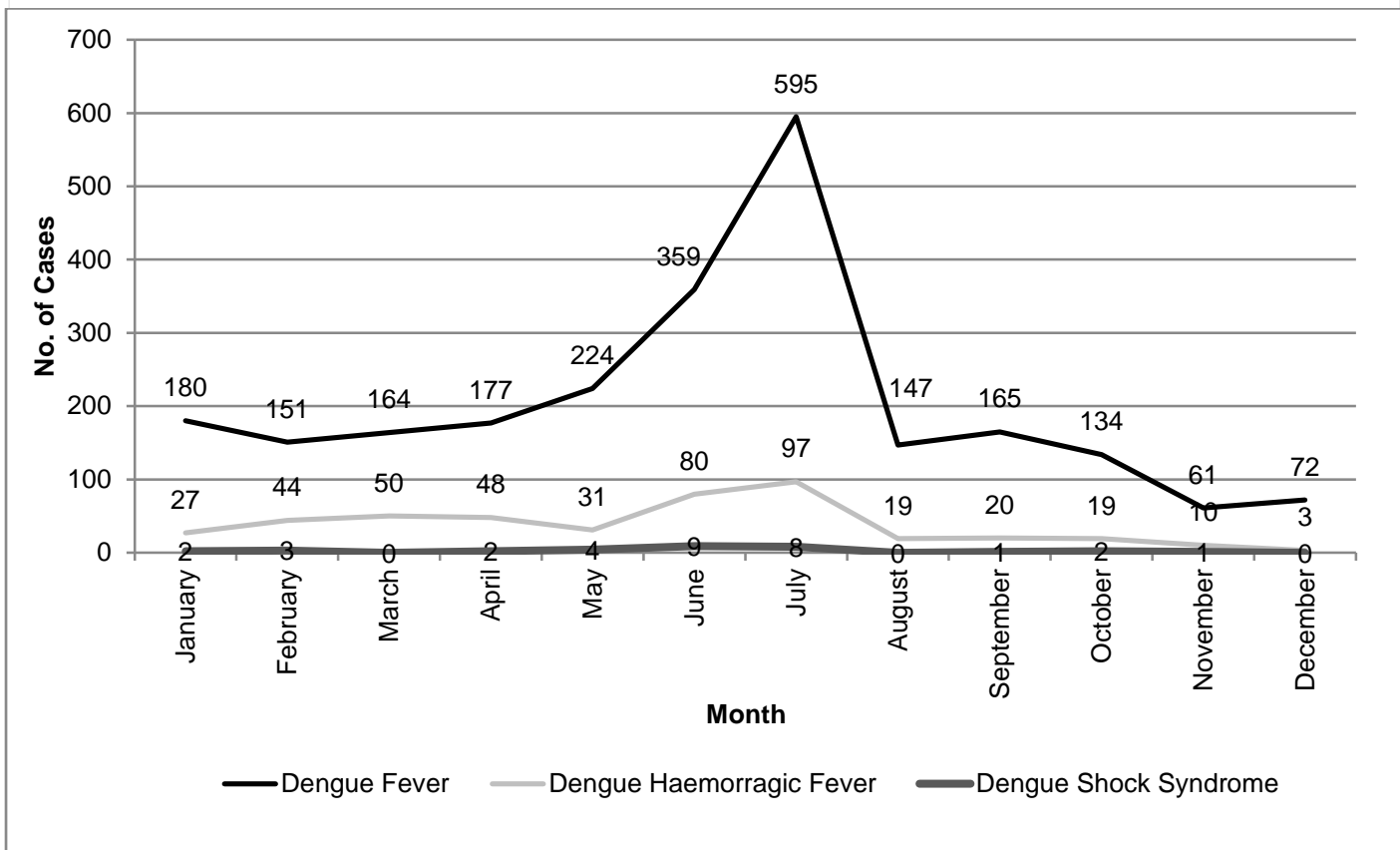
Source: Center for Community Health & Disease Control, 2011

**GRAPH 13: NUMBER OF DENGUE FEVER, DENGUE HAEMORRHAGIC FEVER & DENGUE SHOCK SYNDROME CASES 2010**



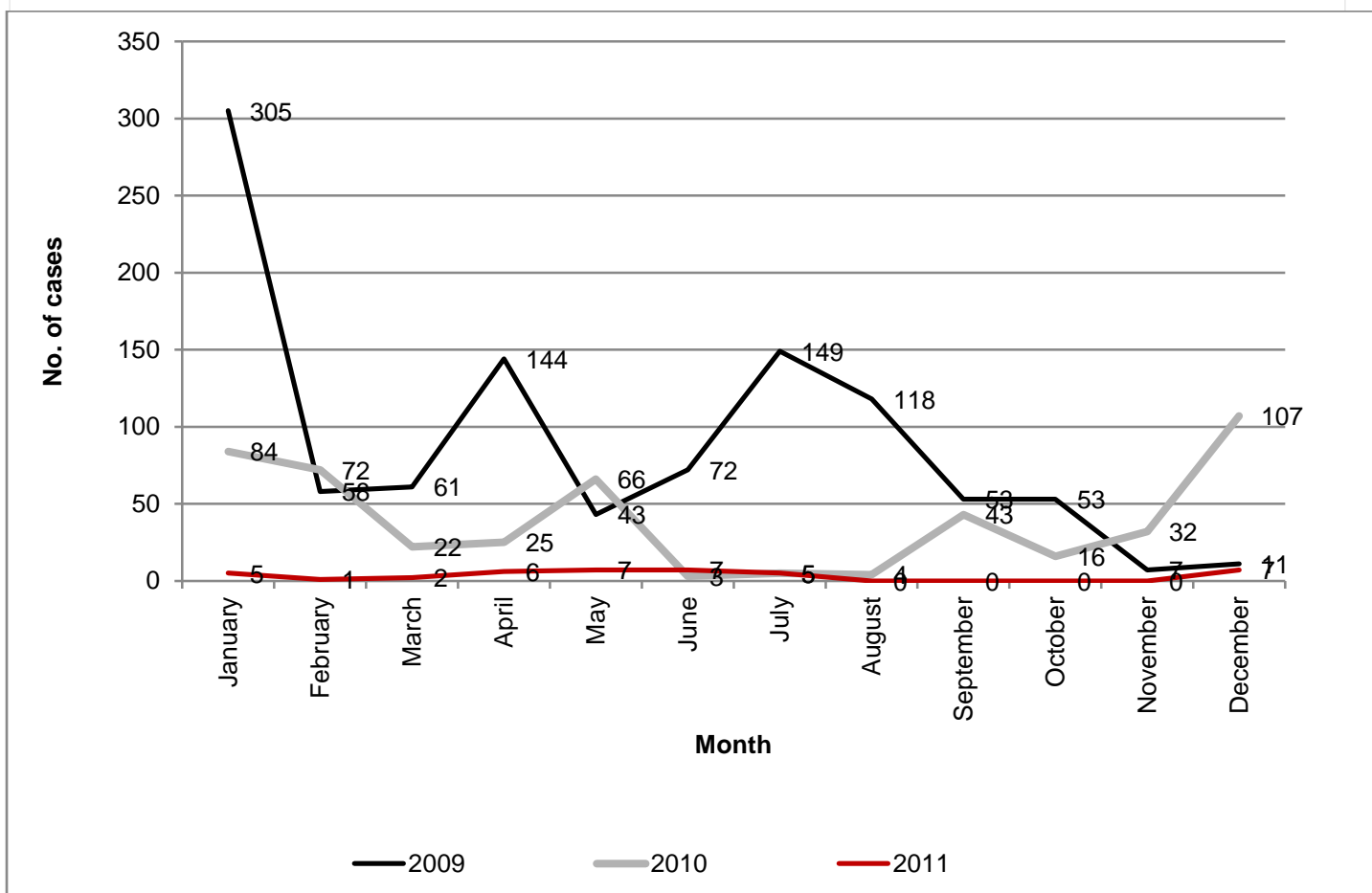
Source: Center for Community Health & Disease Control, 2011

**GRAPH 14: NUMBER OF DENGUE FEVER, DENGUE HAEMORRHAGIC FEVER & DENGUE SHOCK SYNDROME CASES 2011**



Source: Center for Community Health & Disease Control, 2011

**GRAPH 15: NUMBER OF CHIKUNGUNYA CASES 2009, 2010 & 2011**



Source: Center for Community Health & Disease Control, 2011

**TABLE 25: PREVALENCE AND INCIDENCE OF TUBERCULOSIS, 2001 - 2011**

Year	Total cases under treatment	Incidence Rate /'000 sputum positive	Incidence Rate /'000 sputum negative	Prevalence Rate /'000 sputum positive	Prevalence Rate /'000 sputum negative
2001	71	0.24	0.28	0.12	0.14
2002	60	0.23	0.23	0.09	0.13
2003	82	0.26	0.25	0.14	0.16
2004	69	0.26	0.18	0.14	0.11
2005	80	0.26	0.19	0.14	0.16
2006	68	0.19	0.14	0.12	0.11
2007	95	0.21	0.22	0.16	0.16
2008	60	0.19	0.23	0.09	0.11
2009	37	0.5	0.18	0.07	0.06
2010	33	0.14	0.19	0.06	0.05
2011	51	0.15	0.13	0.09	0.07

Source: Center for Community Health & Disease Control, 2011

**TABLE 26: PREVALENCE AND INCIDENCE LEPROSY, 2001 - 2011**

Year	Total cases under treatment	Number of new cases	Incidence Rate /'000	Prevalence Rate /'000
2001	15	25	0.9	0.56
2002	19	29	0.1	0.07
2003	6	20	0.07	0.02
2004	5	8	0.03	0.02
2005	10	15	0.06	0.04
2006	6	8	0.03	0.02
2007	13	11	0.04	0.04
2008	5	6	0.02	0.02
2009	6	10	0.04	0.02
2010	12	7	0.02	0.04
2011	6	14	0.04	0.02

Source: Center for Community Health & Disease Control, 2011



**TABLE 27: INCIDENCE AND CASE FATALITY RATES FOR DIARRHOEA, 2001 - 2011**

Year	Number of new cases	Incidence Rate /'000 popn.	Case fatality Rate /'000 popn.
2001	8,329	30.83	0.00
2002	17,350	65.23	...
2003	13,854	51.00	0.07
2004	13,598	49.67	0.07
2005	23,199	79.06	0.00
2006	19,593	72.08	0.00
2007	12,120	40.54	...
2008	12,656	42.33	...
2009	17,096	40.54	...
2010	18,509	61.14	...
2011	18979	58.40	0.003

Source: Center for Community Health & Disease Control, 2011

... Data not available

**TABLE 28: HIV STATUS IN MALDIVES, 2001 - 2011**

Year	Total Screened	HIV Positive New Cases (Maldivians)	HIV Positive New Cases (Expatriates)
2001	43,329	0	13
2002	41,200	0	11
2003	45,739	1	13
2004	50,279	1	24
2005	49,623	0	21
2006	47,752	0	27
2007	40,238	0	25
2008	29,936	1	15
2009	27,753	0	16
2010	49,495	0	21
2011	31,016	1	18

Source: Center for Community Health & Disease Control, 2011

**TABLE 29: VACCINATION COVERAGE IN THE MALDIVES, 2001 - 2011**

Year	BCG	DPT3	Polio 3	Measles	Tetanus	Hepatitis B 3
2001	98%	98%	97%	98%	95%	98%
2002	98.50%	97.50%	97.50%	96.90%	94.00%	97.50%
2003	98%	97.50%	97.50%	96.00%	95.00%	97.50%
2004	98%	96%	96%	97%	95%	97%
2005	99%	98%	98%	97%	92%	98%
2006	99%	98%	98%	97%	94%	98%
2007	99%	98%	99%	97%	95%	98%
2008	99%	98%	98%	97%	95%	98%
2009	99%	98%	98% (4 <sup>th</sup> Dose)	98%	85%	98%
2010	97%	96%	98% (4 <sup>th</sup> Dose)	97%	90% (5 <sup>th</sup> Dose)	97%
2011	98%	96%	96%	95%	NA	96%

Source: Center for Community Health & Disease Control, 2011

**TABLE 30: SEXUALLY TRANSMITTED INFECTIONS – SYPHILIS STATUS, 2001 - 2011**

Year		2007	2008	2009	2010	2011
<i>Syphilis Screened</i>	<i>(Ante-Natal Clinic)</i>	2828	1548	1648	5833	1641
<i>Syphilis Positive</i>	<i>(Ante-Natal Clinic)</i>	1	0	1	0	3
<i>Syphilis Screened</i>	<i>(Blood donors)</i>	2319	1755	3308	3815	3719
<i>Syphilis Positive</i>	<i>(Blood donors)</i>	0	1	0	0	1

Source: Center for Community Health & Disease Control, 2011

**TABLE 31: SEXUALLY TRANSMITTED INFECTIONS BY SYMPTOMATIC DIAGNOSIS, 2006 - 2011**

Year	2007	2008	2009	2010	2011
<i>Male urethral discharge</i>	132	36	38	58	8
<i>Female vaginal discharge</i>	1265	765	800	1583	395
<i>Male genital ulcer</i>	116	10	9	13	4
<i>Female genital ulcer</i>	106	15	37	29	31
<b>TOTAL</b>	<b>1619</b>	<b>826</b>	<b>884</b>	<b>1683</b>	<b>426</b>

Source: Center for Community Health & Disease Control, 2011

**TABLE 32: CASES OF DENGUE FEVER BY MONTH, 2006 - 2011**

Month/Year	2006	2007	2008	2009	2010	2011
January	265	276	99	105	52	180
February	224	91	74	55	29	151
March	181	25	94	38	40	164
April	205	38	133	52	40	177
May	258	97	220	60	87	224
June	309	187	304	68	101	359
July	191	239	185	95	115	595
August	177	143	125	96	90	147
September	146	114	135	43	61	165
October	197	130	73	59	33	134
November	172	83	94	47	31	61
December	243	69	81	56	73	72
<b>TOTAL</b>	<b>2568</b>	<b>1492</b>	<b>1617</b>	<b>774</b>	<b>752</b>	<b>2429</b>

Source: Center for Community Health and Disease Control, 2011

**TABLE 33: CASES OF DENGUE HAEMORRAGIC FEVER BY MONTH, 2006 - 2011**

Month/Year	2006	2007	2008	2009	2010	2011
January	50	9	10	6	13	27
February	11	3	13	4	6	44
March	10	1	6	1	5	50
April	29	2	19	1	14	48
May	17	3	30	5	10	31
June	13	25	36	1	24	80
July	15	32	25	15	20	97
August	10	24	27	11	21	19
September	7	19	16	6	10	20
October	9	7	5	3	31	19
November	5	14	10	2	73	10
December	8	22	4	12	16	3
<b>TOTAL</b>	<b>184</b>	<b>161</b>	<b>201</b>	<b>67</b>	<b>243</b>	<b>448</b>

Source: Center for Community Health and Disease Control, 2011

**TABLE 34: CASES OF DENGUE SHOCK SYNDROME BY MONTH, 2006 - 2011**

Month/Year	2006	2007	2008	2009	2010	2011
January	5	1	0	0	0	2
February	4	0	0	0	0	3
March	1	0	0	0	0	0
April	2	0	2	0	0	2
May	1	1	0	0	0	4
June	7	1	1	0	2	9
July	1	7	2	0	1	8
August	1	2	0	1	0	0
September	2	2	1	0	2	1
October	0	2	0	3	0	2
November	1	2	0	0	0	1
December	0	0	0	0	0	0
<b>TOTAL</b>	<b>25</b>	<b>18</b>	<b>6</b>	<b>4</b>	<b>5</b>	<b>32</b>

Source: Center for Community Health and Disease Control, 2011

**TABLE 35: CASES OF CHIKUNGUNYA BY MONTH, 2006 - 2011**

Month/Year	2007	2008	2009	2010	2011
January	6003	122	305	84	5
February	1554	78	58	72	1
March	518	36	61	22	2
April	281	17	144	25	6
May	647	12	43	66	7
June	424	5	72	3	7
July	408	182	149	5	5
August	150	97	118	4	0
September	84	37	53	43	0
October	114	212	53	16	0
November	213	357	7	32	0
December	183	559	11	107	7
<b>TOTAL</b>	<b>10,579</b>	<b>1,714</b>	<b>1,074</b>	<b>479</b>	<b>40</b>

Source: Center for Community Health and Disease Control, 2011

Note: Chikungunya reporting started in December 2006

**TABLE 36: THALASSAEMIA MAJOR DEATH AND NEW CASES IN THE MALDIVES, 2001 - 2011**

Year	Total Thalassaemia cases registered *	DEATHS			NEW CASES		
		Republic	Male'	Atolls	Republic	Male'	Atolls
2001	469	10	8	2	38	4	34
2002	501	9	5	4	32	5	27
2003	525	3	2	1	24	5	19
2004	553	3	3	0	28	3	25
2005	579	1	1	0	26	9	17
2006	604	6	3	3	25	2	23
2007	632	8	4	4	28	8	20
2008	669	8	3	5	37	7	30
2009	694	5	1	4	25	4	21
2010	716	5	2	3	22	3	19
2011	747	7	3	4	31	3	28

Source: National Thalassaemia Centre, 2011

Note: This table shows cases Registered at NTC

**TABLE 37: THALASSAEMIA MAJOR CHILDREN IN THE MALDIVES, 2006 - 2011**

Year	Total number registered	Total number of Thalassaemic Major living children	Patient taking treatment at NTC	Patient taking treatment in atolls	Total number of children undergone bone marrow transplant
2006	604	449	277	172	6*
2007	632	469	281	188	9*
2008	669	498	286	212	2*
2009	694	518	289	229	5*
2010	716	535	288	247	1
2011	747	559	288	271	3

Source: National Thalassaemia Centre, 2011

\*Revised figures

**TABLE 38: PERCENTAGE OF THALASSAMIA CASES AMONG TOTAL SCREENED BY CLASSIFICATION, 2001 - 2011**

Classification	2003	2004	2005	2006	2007	2008	2009	2010	2011
<i>B- Thalassaemia Major</i>	0.38	0.37	0.45	0.60	1.12	0.38	0.16	0.08	0.10
<i>B- Thalassaemia Non-carrier</i>	54.50	52.73	40.91	37.46	41.61	35.65	51.07	52.96	37.57
<i>B- Thalassaemia carrier</i>	18.30	18.98	18.46	19.18	15.74	17.53	16.66	16.03	16.65
<i>A- Thalassaemia carrier</i>	0.07	0.54	3.09	4.85	2.03	5.77	1.4	0	0.00
<i>Hb-E B Thalassaemia</i>	0.17	0.12	0.04	0.20	0.20	0.03	0.11	0.04	0.06
<i>E- Homozygous</i>	0.10	0	0	0	0	0	0	0.04	0.02
<i>Homozygous - D</i>									0.02
<i>Hb-E Trait</i>	0.58	1	1.21	0.75	0.88	0.91	0.75	0.36	0.62
<i>Hb-D Trait</i>	0.41	0.54	0.36	0.75	0.32	0.44	0.46	0.16	0.40
<i>Hb Sickle B- Thalassaemia</i>	0	0	0.04	0	0	0	0	0	0.00
<i>Hb S Trait</i>	0.28	0.25	0.36	1.15	0.12	0.06	0.16	0.08	0.10
<i>Iron Deficiency</i>	4.06	2.29	4.66	3.70	2.87	2.48	3.52	0.12	0.02
<i>Inconclusive</i>	20.95	9.40	12.86	10.44	3.51	8.09	15.1	24.64	35.54
<i>Total screened</i>	2907	2403	2232	2002	2509	3189	3722	2496	4972

Source: National Thalassaemia Centre, 2011

Note: this table shows data from the Thalassaemia screening programme at NTC

# *Human Resources*

## HUMAN RESOURCES

**TABLE 39A: DISTRIBUTION OF MEDICAL STAFF IN MALE' AND ATOLLS BY SEX, 2009**

	Republic			Male'			Atolls		
	Total	Male	Female	Total	Male	Female	Total	Male	Female
<b>Doctors</b>	<b>526</b>	<b>403</b>	<b>123</b>	<b>204</b>	<b>126</b>	<b>78</b>	<b>322</b>	<b>277</b>	<b>45</b>
<i>General Practitioners</i>	341	266	75	102	61	41	239	205	34
<i>Specialists</i>	185	137	48	102	65	37	83	72	11
<b>Nurses</b>	<b>1846</b>	<b>64</b>	<b>1,782</b>	<b>637</b>	<b>26</b>	<b>611</b>	<b>1,209</b>	<b>38</b>	<b>1,171</b>
<b>Paramedical Staff</b>	<b>609</b>	<b>344</b>	<b>265</b>	<b>287</b>	<b>120</b>	<b>167</b>	<b>322</b>	<b>224</b>	<b>98</b>
<i>Laboratory technicians<sup>1</sup></i>	261	99	162	120	24	96	141	75	66
<i>Physiotherapists</i>	21	18	3	13	10	3	8	8	0
<i>Radiographers</i>	54	42	12	33	21	12	21	21	0
<i>Dentist<sup>2</sup></i>	45	20	25	31	11	20	14	9	5
<i>Pharmacists / Pharmacy Asst</i>	206	155	51	88	54	34	118	101	17
<b>Community Health Personnel</b>	<b>632</b>	<b>140</b>	<b>492</b>	<b>2</b>	<b>1</b>	<b>1</b>	<b>630</b>	<b>139</b>	<b>491</b>
<i>Community Health Workers</i>	230	96	134	2	1	1	228	95	133
<i>Family Health Workers</i>	283	44	239	0	0	0	283	44	239
<i>Traditional Birth Attendant (Foolhuma)</i>	<b>119</b>	<b>0</b>	<b>119</b>	<b>0</b>	<b>0</b>	<b>0</b>	<b>119</b>	<b>0</b>	<b>119</b>
<i>Trained</i>	119	0	119	0	0	0	119	0	119
<i>Untrained</i>	0	0	0	0	0	0	0	0	0

Source: Ministry of Health, 2011

<sup>1</sup> - includes laboratory technicians, laboratory assistants, food technologists and microbiologists

<sup>2</sup> - dentists, dental mechanics and dental hygienists

Note: only ADK and IMDC contributed to private sector data.



**TABLE 39B: DISTRIBUTION OF MEDICAL STAFF IN MALE' AND ATOLLS BY SEX, 2010**

	Republic			Male'			Atolls		
	Total	Male	Female	Total	Male	Female	Total	Male	Female
<b>Doctors</b>	<b>525</b>	<b>434</b>	<b>91</b>	<b>219</b>	<b>142</b>	<b>77</b>	<b>306</b>	<b>292</b>	<b>14</b>
<i>General Practitioners</i>	330	288	42	106	67	39	224	221	3
<i>Specialists</i>	195	146	49	113	75	38	82	71	11
<b>Nurses</b>	<b>1868</b>	<b>71</b>	<b>1,797</b>	<b>660</b>	<b>63</b>	<b>597</b>	<b>1,208</b>	<b>8</b>	<b>1,200</b>
<b>Paramedical Staff</b>	<b>629</b>	<b>381</b>	<b>248</b>	<b>358</b>	<b>194</b>	<b>164</b>	<b>271</b>	<b>187</b>	<b>84</b>
<i>Laboratory technicians<sup>1</sup></i>	276	107	169	141	27	114	135	80	55
<i>Physiotherapists</i>	22	15	7	14	9	5	8	6	2
<i>Radiographers</i>	52	39	13	31	22	9	21	17	4
<i>Dentist<sup>2</sup></i>	32	10	22	27	7	20	5	3	2
<i>Pharmacists / Pharmacy Asst.*</i>	247	210	37	145	129	16	102	81	21
<b>Community Health Personnel</b>	<b>805</b>	<b>180</b>	<b>625</b>	<b>2</b>	<b>0</b>	<b>2</b>	<b>803</b>	<b>180</b>	<b>623</b>
<i>Community Health Workers</i>	278	126	152	2	0	2	276	126	150
<i>Family Health Workers</i>	313	54	259	0	0	0	313	54	259
<i>Traditional Birth Attendant (Foolhuma)</i>	<b>214</b>	<b>0</b>	<b>214</b>	<b>0</b>	<b>0</b>	<b>0</b>	<b>214</b>	<b>0</b>	<b>214</b>
<i>Trained</i>	214	0	214	0	0	0	214	0	214
<i>Untrained</i>	0	0	0	0	0	0	0	0	0

Source: Ministry of Health, 2011

<sup>1</sup> - includes laboratory technicians, laboratory assistants, food technologists and microbiologists

<sup>2</sup> - dentists, dental mechanics and dental hygienists

Note: only ADK and IMDC contributed to private sector data.

**TABLE 40A: DISTRIBUTION OF MEDICAL PERSONNEL BY LOCALS AND EXPATRIATES, 2009**

Type of Health Professional	PUBLIC SECTOR				TOTAL PUBLIC SECTOR		TOTAL PRIVATE SECTOR ^		GRAND TOTAL
	MALE <sup>1</sup>		ATOLLS		Expatriate	Local	Expatriate	Local	
	Expatriate	Local	Expatriate	Local					
<i>General Practitioners</i>	45	39	237	0	282	39	14	6	<b>341</b>
<i>Doctors (Specialists)</i>	32	45	80	0	112	45	26	2	<b>185</b>
<i>Nurse</i>	344	232	719	481	1063	713	62	8	<b>1846</b>
<i>Lab. Technicians<sup>1</sup></i>	21	77	99	41	120	118	17	6	<b>261</b>
<i>Physiotherapists</i>	9	0	2	5	11	5	5	0	<b>21</b>
<i>Radiographers</i>	13	10	20	1	33	11	10	0	<b>54</b>
<i>Dentists<sup>2</sup></i>	2	28	7	5	9	33	3	0	<b>45</b>
<i>Pharmacists / Pharmacy Asst</i>	NA	NA	NA	NA	NA	NA	158	48	<b>206</b>
<i>Community Health Workers</i>	0	2	0	228	0	230	0	NA	<b>230</b>
<i>Family Health Workers</i>	0	0	0	283	0	283	0	NA	<b>283</b>
<i>Traditional Birth Attendant (Foolhuma)</i>	0	0	0	119	0	119	0	NA	<b>119</b>
<b>TOTAL</b>	<b>466</b>	<b>435</b>	<b>1164</b>	<b>1183</b>	<b>1630</b>	<b>1618</b>	<b>295</b>	<b>70</b>	<b>3613</b>

Source: Ministry of Health, 2011

^ Pvt. sector includes ADK and IMDC only

<sup>1</sup> - includes laboratory technicians, laboratory assistants, food technologists and microbiologists

<sup>2</sup> - dentists, dental mechanics and dental hygienists

Note: only ADK and IMDC contributed to private sector data.

**TABLE 40B: DISTRIBUTION OF MEDICAL PERSONNEL BY LOCALS AND EXPATRIATES, 2010**

Type of Health Professional	PUBLIC SECTOR				TOTAL PUBLIC SECTOR		TOTAL PRIVATE SECTOR ^		GRAND TOTAL
	MALE'		ATOLLS		Expatriate	Local	Expatriate	Local	
	Expatriate	Local	Expatriate	Local					
<i>General Practitioners</i>	58	39	218	6	276	45	4	5	<b>330</b>
<i>Doctors (Specialists)</i>	44	45	82	0	126	45	22	2	<b>195</b>
<i>Nurse</i>	342	264	639	569	981	833	44	10	<b>1868</b>
<i>Lab. Technicians<sup>1</sup></i>	28	109	94	41	122	150	3	1	<b>276</b>
<i>Physiotherapists</i>	11	0	8	0	19	0	3	0	<b>22</b>
<i>Radiographers</i>	14	9	21	0	35	9	6	2	<b>52</b>
<i>Dentists<sup>2</sup></i>	1	18	4	1	5	19	1	7	<b>32</b>
<i>Pharmacists / Pharmacy Asst *</i>	0	0	0	0	0	0	177	70	<b>247</b>
<i>Community Health Workers</i>	0	2	0	276	0	278	NA	NA	<b>278</b>
<i>Family Health Workers</i>	0	0	0	313	0	313	NA	NA	<b>313</b>
<i>Traditional Birth Attendant (Foolhuma)</i>	0	0	0	214	0	214	NA	NA	<b>214</b>
<b>TOTAL</b>	<b>498</b>	<b>486</b>	<b>1066</b>	<b>1420</b>	<b>1564</b>	<b>1906</b>	<b>260</b>	<b>97</b>	<b>3827</b>

Source: Ministry of Health, 2011

^ Pvt. sector includes ADK and IMDC only

<sup>1</sup> - includes laboratory technicians, laboratory assistants, food technologists and microbiologists

<sup>2</sup> - dentists, dental mechanics and dental hygienists

Note: only ADK and IMDC contributed to private sector data.

# *Health Care Finance*

## HEALTH CARE FINANCE

**TABLE 41A: NATIONAL HEALTH ACCOUNTS – SELECTED RATIO\* INDICATORS FOR EXPENDITURES ON HEALTH 2011**

A. SELECTED RATIO INDICATORS* FOR EXPENDITURES ON HEALTH	2011
<b>I. Expenditure Ratios</b>	
<i>Total expenditure on health (THE) as % of GDP</i>	9.2
<i>General government expenditure on health (GGHE) as % of GDP</i>	4.1
<i>External resources on health as % of THE</i>	<b>3.3</b>
<i>General government expenditure on health (GGHE) as % of THE</i>	44.0
<i>Private expenditure on health (PvtHE) as % of THE</i>	52.7
<i>Out of pocket expenditure as % of THE</i>	49.4
<i>GGHE as % of General government expenditure</i>	9.5
<i>Social security funds as % of GGHE</i>	19.6
<i>Private insurance as % of PvtHE</i>	6.5
<i>Out of pocket expenditure as % of PvtHE</i>	93.6
<i>Non-profit institutions expenditure on health as % of PvtHE</i>	0.3
<i>Total expenditure on hospitals as % of THE</i>	28.0
<i>Hospitals financed by General government % of GGHE</i>	63.6
<i>Services of curative and rehabilitative care % THE</i>	66.5
<i>Government expenditure on services of curative and rehabilitative care % GGHE</i>	60.0
<i>Government expenditure on ancillary services to health % GGHE</i>	0.2
<i>Prevention and public health services % THE</i>	5.4
<i>Government expenditure on prevention and public health services % GGHE</i>	5.9
<i>Administration and health insurance % THE</i>	10.7
<i>Government expenditure on health administration and health insurance % GGHE</i>	21.9
<i>Total expenditure on pharmaceuticals as % of THE</i>	17.0
<i>Private expenditure on pharmaceuticals as % of PvtHE</i>	19.7
<i>Government compensation of health employees as % of GGHE</i>	5.8
<i>Gross fixed capital formation % THE</i>	1.3
<i>General government gross fixed capital formation as % of GGHE</i>	2.4

Source: NHA Survey, Ministry of Health, 2011

\* These ratios and per capita levels are automatically derived using the aggregate figures in Section B

**TABLE 41A: NATIONAL HEALTH ACCOUNTS – SELECTED RATIO\* INDICATORS FOR EXPENDITURES ON HEALTH 2011, CONT'D...**

A. SELECTED RATIO INDICATORS* FOR EXPENDITURES ON HEALTH	2011
<b>I. Selected per capita indicators for expenditures on health</b>	
Total expenditure on health / capita at exchange rate	561
General government expenditure on health / cap x-rate	247

Source: NHA Survey, Ministry of Health, 2011

\* These ratios and per capita levels are automatically derived using the aggregate figures in Section B

**TABLE 41B: NATIONAL HEALTH ACCOUNTS – HEALTH SYSTEM EXPENDITURE & FINANCING, 2011**

B. VALUES UNDERLYING RATIOS AND LEVELS	2011
<b>HEALTH EXPENDITURE DATA</b>	
Financing sources – rest of the world / External resources	91
Total expenditure on health	2,767
General government expenditure on health	1,217
Territorial governments	812
Central government	471
Ministry of Health	220
Social security funds	251
Parastatal corporations	68
Private expenditure on health	1,342
Private insurance	92
Non-profit institutions serving households (e.g. NGOs)	5
Out of pocket expenditure	1,250
Corporations (other than health insurance)	68
Compensation of health employees	161
Of which : government	161
pharmaceuticals	470
Pharmaceuticals: private expenditure	278
Capital formation : public facilities	31
Hospitals financed by general government	774
Services of curative and rehabilitative care	1,848
General government to services of curative and rehabilitative care	731
Ancillary services to health care	3
General government to ancillary services to health care	3
Prevention and public health services	150
General government to prevent and public health services	44
Administration and health insurance (total)	295
General government to health administration and health insurance	280

Source: NHA Survey, Ministry of Health, 2011

**TABLE 41B: NATIONAL HEALTH ACCOUNTS – HEALTH SYSTEM EXPENDITURE & FINANCING 2011, CONT'D...**

B. VALUES UNDERLYING RATIOS AND LEVELS	2011
<b>MACRO DATA</b>	
<i>Gross Domestic Product</i>	29,936
<i>Final consumption expenditure of Households and Non-profit institutions serving households</i>	5,595
<i>Households final consumption</i>	5,595
<i>General government expenditure</i>	12,824
<i>Exchange Rate (NCU per US\$)</i>	15.42
<i>Population</i>	320

Source: NHA Survey, Ministry of Health, 2011

**TABLE 42: ALLOCATIONS AND EXPENDITURE OF GOVERNMENT BUDGET ON HEALTH SECTOR, 2004 – 2011**

Year	Total GDP at Constant basic prices (in million Rf)	Total GDP at Current basic prices (in million Rf)	Public health exp. (% of Total GDP)	GDP growth rates	Health expenditure as % of national Budget
2004	13,767.80	13,678.00	3.1	7.5	11.3
2005	12,489.00	12,704.00	4.1	8.6	8.7
2006	14,936.00	16,683.00	4.1	16.8	9.7
2007	16,512.00	19,737.00	4.0	27.2	9.4
2008	18,526.00	24,213.00	5.5	62.3	12.8
2009	17,648.00	24,858.00	5.6	14.2	12.6
2010	18,659.00	26,566.00	3.7	-6.8	9.0
2011	20,051.00	29,936.00	1.3	6.7	3.1

Revised table

Source: Department of National Planning, 2011



# *Social Protection*

## SOCIAL PROTECTION

**TABLE 43: NUMBER OF PERSONS COVERED UNDER DIFFERENT SOCIAL PROTECTION SCHEMES BY ATOLL, 2011**

Locality	Total	Health Insurance schemes		Single Parent Allowance		Foster Parent Allowance		Emergency Medical Welfare	Disability Allowance
		Madhana	Madhana Plus	Parent	Children	Parent	Children		
Republic	<b>115,888</b>	<b>89,281</b>	<b>14,547</b>	<b>2,472</b>	<b>4,673</b>	<b>24</b>	<b>29</b>	<b>1,002</b>	<b>3,560</b>
Male'	<b>30,215</b>	<b>15,824</b>	<b>11,398</b>	<b>853</b>	<b>1,543</b>	<b>9</b>	<b>10</b>	<b>164</b>	<b>414</b>
Atolls	<b>85,373</b>	<b>73,457</b>	<b>3,149</b>	<b>1,619</b>	<b>3,130</b>	<b>15</b>	<b>19</b>	<b>838</b>	<b>3146</b>
HA	<b>5,481</b>	4,589	247	101	185	1	1	72	285
HDh	<b>6,744</b>	5,678	237	178	319	1	1	71	259
Sh	<b>3,864</b>	3,273	158	62	111	1	1	27	231
N	<b>3,798</b>	3,244	179	64	116	1	1	38	155
R	<b>5,055</b>	4,201	206	116	237	1	1	70	223
B	<b>3,963</b>	3,424	168	68	114	1	1	39	148
Lh	<b>3,359</b>	2,869	146	54	104	0	0	43	143
K	<b>32,939</b>	18,433	11,509	929	1,709	11	14	213	121
AA	<b>2,077</b>	1,712	121	45	85	0	0	35	79
ADh	<b>2,382</b>	2,039	72	34	65	0	0	33	139
V	<b>618</b>	543	31	7	10	0	0	12	15
M	<b>1,960</b>	1,754	59	27	48	0	0	18	54
F	<b>1,274</b>	1,065	74	21	34	0	0	14	66
Dh	<b>1,965</b>	1,661	86	41	78	2	2	24	71
Th	<b>4,285</b>	3,818	192	47	85	0	0	44	99
L	<b>3,561</b>	2,987	127	81	166	0	0	42	158
GA	<b>7,275</b>	6,686	130	70	174	0	0	45	170
GDh	<b>8,280</b>	7,189	274	166	329	1	1	59	261
Gn	<b>3,347</b>	2,670	132	120	238	2	3	30	152
S	<b>12,939</b>	11,445	399	234	466	2	3	73	317

*Source: National Social Protection Agency, 2011*

**TABLE 44: GOVERNMENT EXPENDITURE ON DIFFERENT SOCIAL PROTECTION SCHEMES BY TYPE, 2011**

Month	Total	Madhana	Madhana Plus	Single Parent Allowance	Foster Parent Allowance	Emergency Medical Welfare	Disability Allowance
<b>Total</b>	348,632,350.40	187,279,385.40	25,504,881.80	44,840,000.00	1,242,500.00	10,465,083.18	79,300,500.00
<b>January</b>	16,942,956.31	12,556,504.98	1,888,881.78	2,023,000.00	83,000.00	225,569.55	166,000.00
<b>February</b>	18,662,782.82	12,105,940.43	2,025,586.03	3,089,000.00	95,500.00	908,756.37	438,000.00
<b>March</b>	22,858,489.94	15,821,588.06	2,902,737.39	3,278,000.00	108,000.00	748,164.49	0
<b>April</b>	32,521,452.46	14,632,306.52	2,568,079.19	3,539,000.00	143,500.00	1,162,566.75	10,476,000.00
<b>May</b>	38,477,431.50	16,990,821.33	3,242,861.12	3,843,000.00	166,000.00	1,164,749.05	13,070,000.00
<b>June</b>	21,907,262.65	18,524,882.85	2,561,494.76	-	-	700,885.04	120,000.00
<b>July</b>	34,550,811.91	18,274,780.87	2,173,020.93	5,422,000.00	332,000.00	458,510.11	7,890,500.00
<b>August</b>	34,418,593.11	12,646,392.62	1,272,070.62	5,907,000.00		217,129.87	14,376,000.00
<b>September</b>	28,524,394.53	16,187,207.17	2,334,758.08	1,258,000.00	47,000.00	901,429.28	7,796,000.00
<b>October</b>	34,419,346.60	17,202,556.11	1,594,148.00	5,690,000.00	41,500.00	595,142.49	9,296,000.00
<b>November</b>	25,164,704.97	14,270,199.52	1,257,939.29	1,400,000.00	47,000.00	467,566.16	7,722,000.00
<b>December</b>	40,184,123.57	18,066,204.92	1,683,304.63	9,391,000.00	179,000.00	2,914,614.02	7,950,000.00

Source: National Social Protection Agency, 2011

Note: Madhana plus expenditure includes of only medical expenditure abroad ie from India and Srilanka.

"All the expenditures of madhana and madhana plus are the expenditures are based on the claims approved.

Mrf 5,430,226.96 is spent on transportation by madhana which includes emergency evacuation and abroad airfare tickets and is out of total madhana expenditure"

**TABLE 45: EXPENDITURE ON ELECTRICITY SUBSIDY MALE', 2010-2011**

Month	No. of Households		Total Expenditure (MVR)	
	2010	2011	2010	2011
<b>Total</b>	15260	13828	3,675,101.03	5,991,574.02
<b>January</b>	15592	13973	3,818,073.97	7,006,150.74
<b>February</b>	7051	14118	1,923,741.08	8,594,709.77
<b>March</b>	7061	14339	6,335,718.86	11,379,902.27
<b>April</b>	21918	14703	11,387,176.50	14,222,947.97
<b>May</b>	22088	15283	10,939,317.61	14,988,565.71
<b>June</b>	22306	15897	9,423,440.80	15,542,391.54
<b>July</b>	22641	16459	10,121,275.79	16,716,160.38
<b>August</b>	12737	16943	7,714,696.92	17,181,948.87
<b>September</b>	13005	17538	4,830,417.52	18,260,447.02
<b>October</b>	13544	17804	5,559,527.59	17,630,859.52
<b>November</b>	13696	18072	5,367,983.59	15,312,456.35
<b>December</b>	15260	13828	3,675,101.03	5,991,574.02

Source: National Social Protection Agency, 2011

**TABLE 46: EXPENDITURE ON MADHANA SERVICES BY TYPE OF INSTITUTION AND ATOLL, 2011**

Locality	Total	Hospitals	Pharmacies	Clinics	Opticals	Others
Republic	212,768,744.68	120,862,229.74	64,436,922.06	13,453,201.43	6,964,381.00	7,052,010.54
Male'	164,653,791.79	95,533,490.23	41,650,708.68	13,453,201.43	6,964,380.91	7,052,010.54
Atolls	48,114,952.89	25,328,739.51	22,786,213.37	0.00	0.00	0.00
HA	na	na	na	na	na	na
HDh	0.00	na	na	na	na	na
Sh	4,772,194.28	3,198,406.21	1,573,788.08	na	na	na
N	0.00	na	na	na	na	na
R	0.00	na	na	na	na	na
B	3,002,877.81	na	3,002,877.81	na	na	na
Lh	0.00	na	na	na	na	na
K	0.00	na	na	na	na	na
AA	0.00	na	na	na	na	na
Adh	40.00	40.00	na	na	na	na
V	0.00	na	na	na	na	na
M	0.00	na	na	na	na	na
F	547,838.97	na	547,838.97	na	na	na
Dh	0.00	na	na	na	na	na
Th	0.00	na	na	na	na	na
L	2,632,648.06	2,632,648.06	na	na	na	na
GA	0.00	na	na	na	na	na
GDh	0.00	na	na	na	na	na
Gn	5,528,855.60	3,487,116.92	2,041,738.68	na	na	na
S	31,630,498.16	16,010,528.33	15,619,969.83	na	na	na
Abroad (India, Srilanka)	na	0.00	0.00	0.00	0.00	0.00

Source: National Social Protection Agency, 2011

Note: These expenditures are based on the blocked amount

**TABLE 47: EXPENDITURE ON PERSONS COVERED UNDER MADHANA POLICIES BY TYPE OF SERVICE, 2011**

Type of Service	Total Expenditure (MVR)
<b>Total</b>	<b>212,784,267.19</b>
Out-patient care	76,552,839.62
In-patient care	56,966,349.49
In ICU	2,053,951.05
Admitted in ward	52,858,447.39
Out-patient medicine	52,853,766.06
In-patient medicine	11,795,556.63
Circumcision	24,521.08
Inter-atoll transport for critical patients	5,856,988.85
Moved to Male'	na
Moved to regional hospitals	na
Dialysis	1,807,798.17
Medical check-up	3,455.00
Glases / lenses	6,839,992.28
Crutch	na
Walking aid	na
Wheel chair	na
Hearing aid	na
Others	na
Joint / ligament related	83,000.00

Source: National Social Protection Agency, 2011

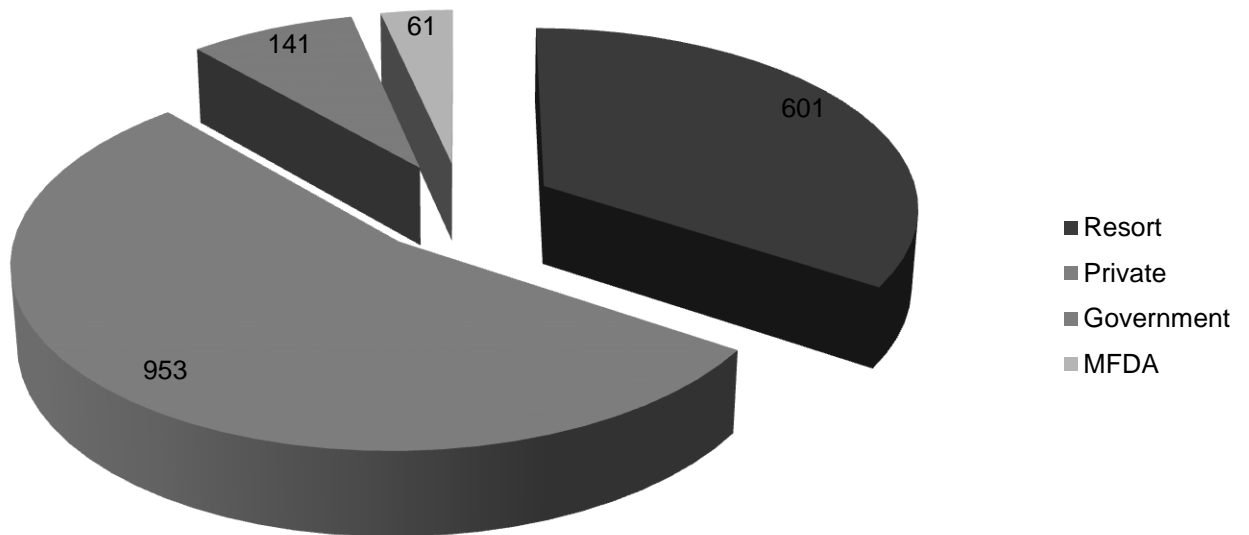
# *Data from National Health Laboratory*

## DATA FROM NATIONAL HEALTH LABORATORY

### WATER MICROBIOLOGY

This includes different types of water samples (rain, desalinated, sea, sewage, well..Etc) received to National health laboratory from resorts, private companies/factories, Government, and MFDA for microbiological testing.

**GRAPH 15: WATER MICROBIOLOGY SAMPLES FOR 2011**

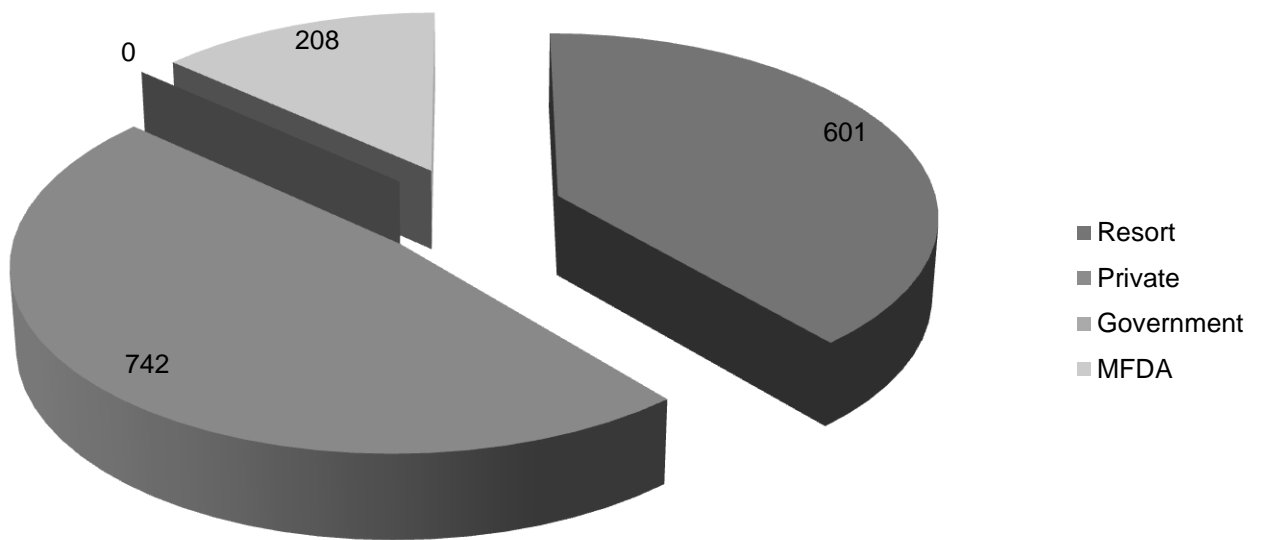


Source: National Health Laboratory, 2011

## FOOD MICROBIOLOGY

This includes different types of food samples (fish and fishery products, cooked, raw, dairy products ...etc) received to national health laboratory from resorts, private companies/factories, Government, and MFDA for microbiological testing

**GRAPH 16: FOOD MICROBIOLOGY SAMPLES, 2011**



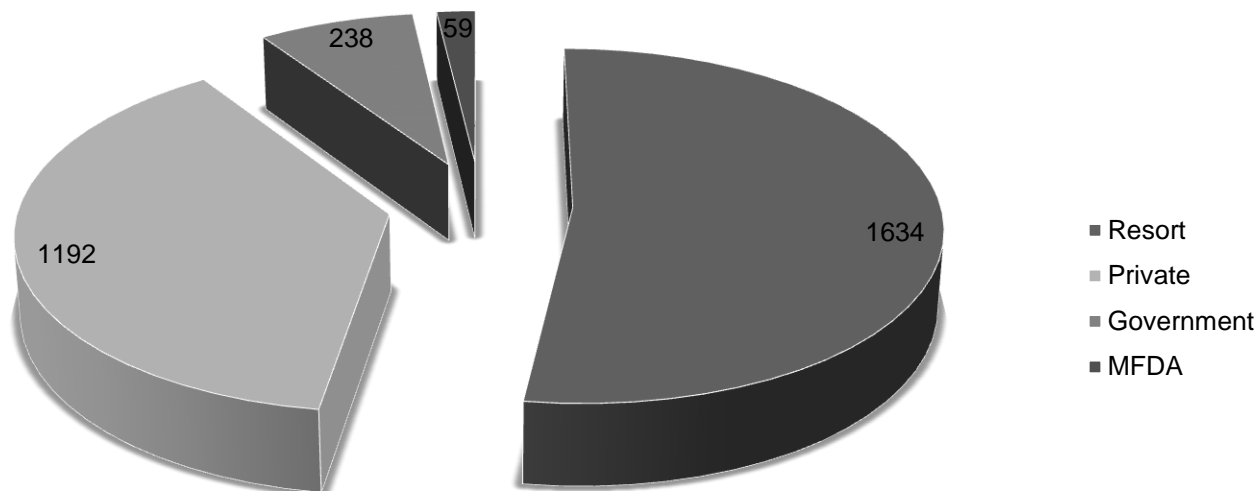
Source: National Health Laboratory, 2011



## WATER CHEMISTRY

This includes different types of water samples (rain, desalinated, sea, sewage, well...Etc) received to National health laboratory from resorts, private companies/factories, Government, and MFDA for chemical testing.

**GRAPH 17: WATER CHEMISTRY SAMPLES, 2011**

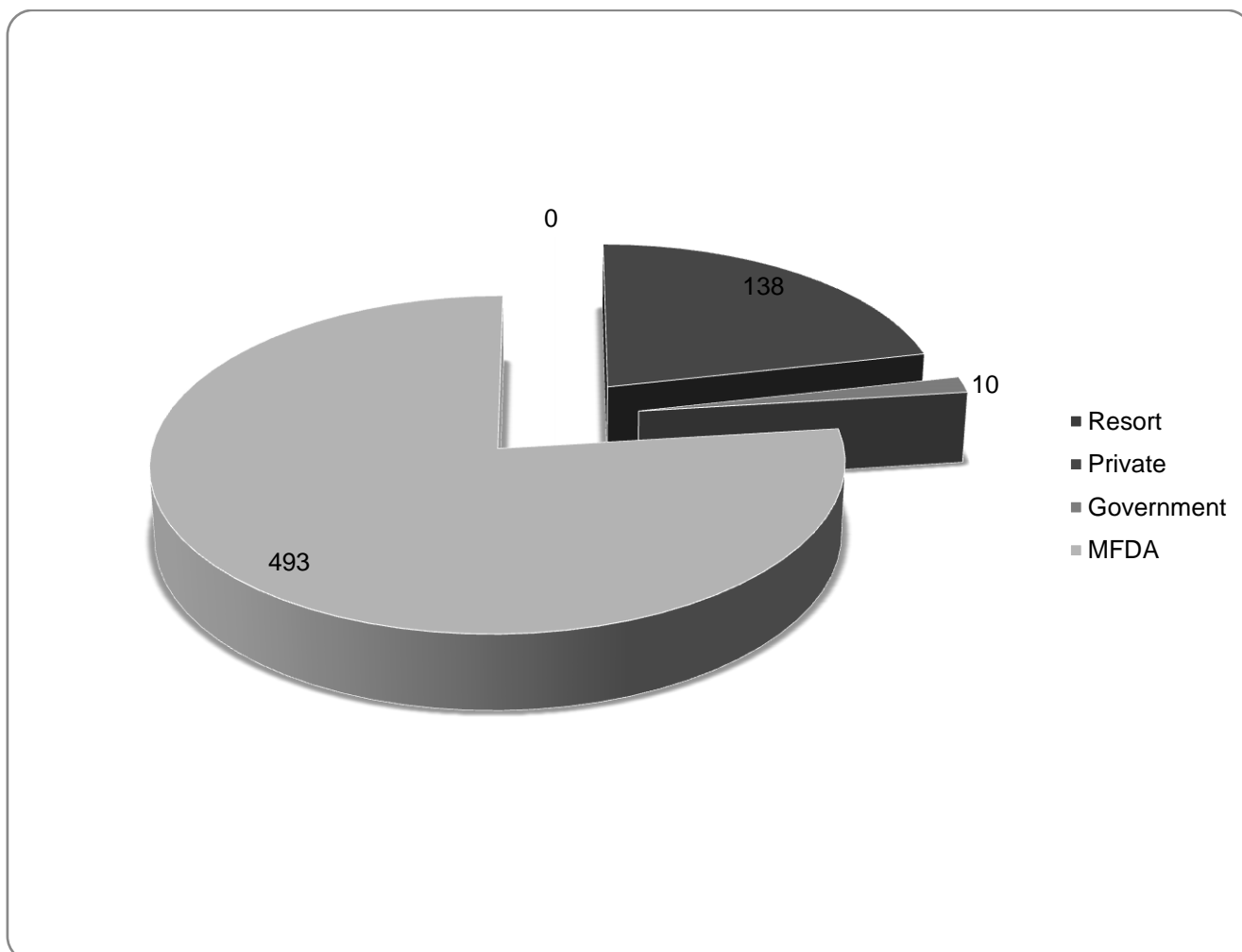


Source: National Health Laboratory, 2011

## FOOD CHEMISTRY

This includes different types of food samples received to National health laboratory from resorts, private companies/factories, Government, and MFDA for chemical testing.

**GRAPH 18: FOOD CHEMISTRY SAMPLES, 2011**

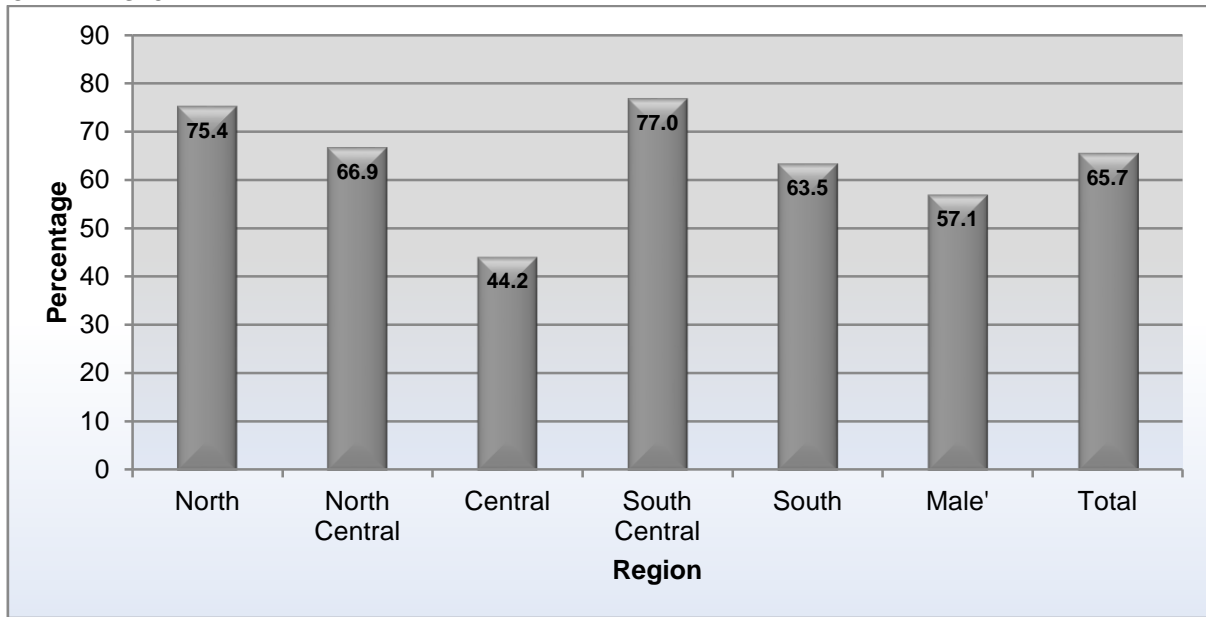


Source: National Health Laboratory, 2011

# *Data From Surveys*

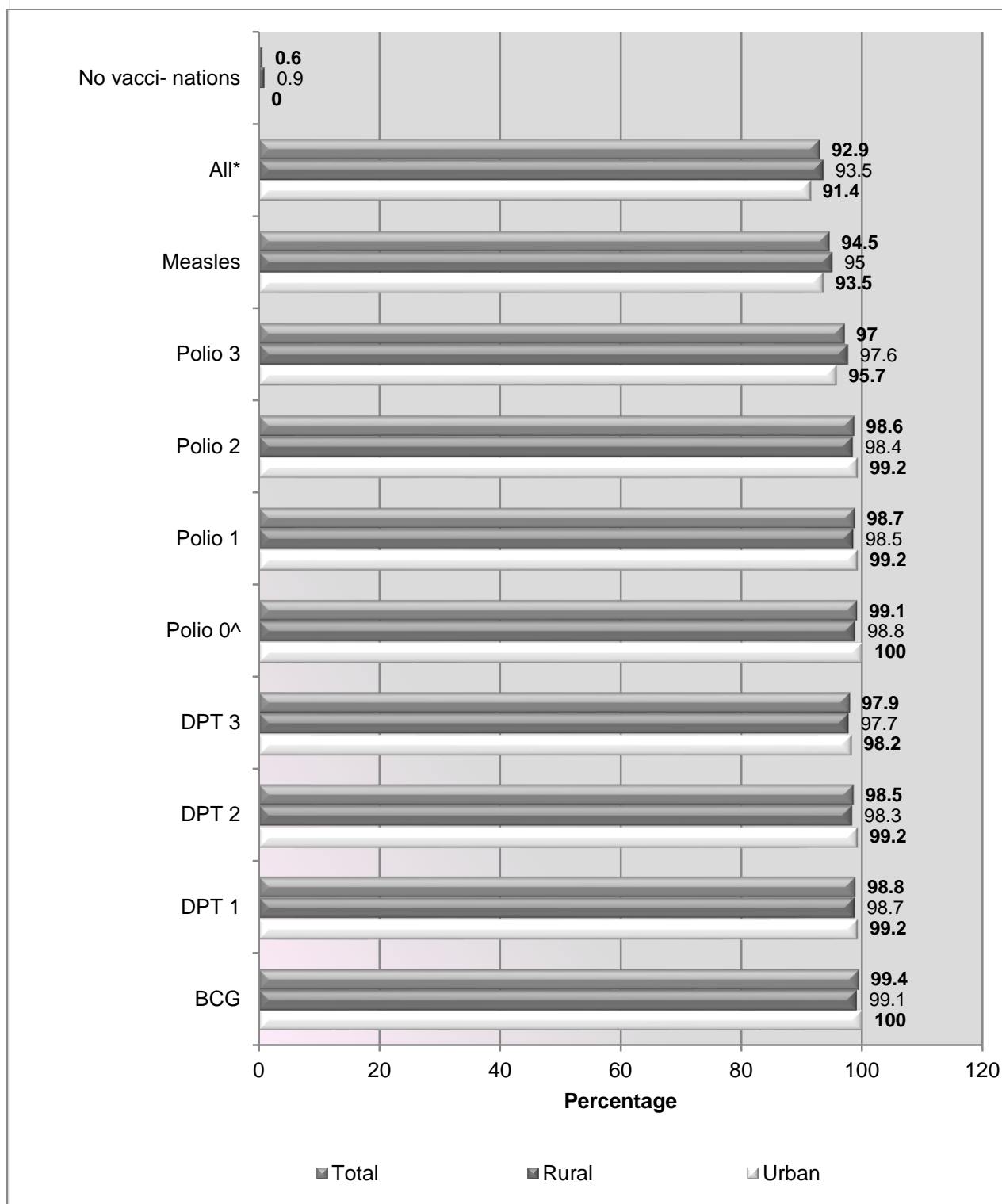
## DATA FROM SURVEYS

**GRAPH 19: PROPORTION OF UNDER-FIVE CHILDREN WHO HAVE RECEIVED VITAMIN A IN THE PAST 6 MONTHS BY REGION**



Source: National Micronutrient Survey 2007.

**GRAPH 20: IMMUNIZATION COVERAGE, 2009**



Source: Maldives Demographic Health Survey, 2009

Note: Polio 0 is the polio vaccination given at birth.

All \* - BCG, measles and three doses each of DPT and polio vaccine (excluding polio vaccine given at birth)

**TABLE 48: NUTRITION STATUS OF CHILDREN UNDER 5 YEARS OF AGE**

Year	Source	Stunting (<-2SD)	Wasting (<-2SD)	Underweight (<-2SD)
		Height-for-age	Weight-for-Height	Weight-for-age
1996	MICS-1	30	17	43
2001	MICS-2	24.8	13.2	30.4
2005	KAP SURVEY	17	13	21.0
2009	MDHS	18.9	10.6	17.3

**TABLE 49: PERCENTAGE DISTRIBUTION OF CHILDREN EXCLUSIVELY BREASTFED BY COMPLETED AGE IN MONTHS - MICS 2001**

Completed Breast Feeding (In months)	Percent
1 Month	5.7 %
2 Months	10.7 %
3 Months	14.1 %
4 Months	27.3 %
5 Months	4.7 %
6 Months	10.4 %
Number of Children	389

Source: Multiple Indicator Cluster Survey, 2001, Ministry of Health

**TABLE 50: DISTRIBUTION OF PREVALENCE OF EXCLUSIVE BREASTFEEDING**

Region	North		North Central		Central		South Central		South		Malé		Total	
	Boy	Girl	Boy	Girl	Boy	Girl	Boy	Girl	Boy	Girl	Boy	Girl	Boy	Girl
<b>Sex</b>	Boy	Girl	Boy	Girl	Boy	Girl	Boy	Girl	Boy	Girl	Boy	Girl	Boy	Girl
<b>Number</b>	133	173	149	190	161	173	159	186	138	117	193	193	933	1032
<b>Never exclusively Breastfed</b>	2.3	0.6	1.3	0.5	2.5	0.0	0.0	0.5	2.9	0.9	1.6	0.5	1.7	0.5
<b>Up to 4 months</b>	79.7	82.7	77.9	73.2	80.7	80.3	78.6	83.3	75.4	70.1	76.7	71.5	78.1	77.1
<b>Up to 6 months</b>	57.9	61.3	56.4	50.5	50.9	51.4	51.6	51.1	51.4	47.9	45.6	42.5	51.9	50.8
<b>&gt;6 months</b>	3.0	3.5	4.7	2.6	2.5	2.3	1.3	2.7	0.7	1.7	1.0	2.1	2.1	2.5
<b>Mean months (SD)</b>	4.9 (1.7)	4.9 (1.8)	4.7 (2.1)	4.5 (2.1)	4.8 (1.7)	4.8 (1.7)	4.7 (1.7)	4.8 (1.7)	4.6 (1.9)	4.3 (2.1)	4.5 (1.9)	4.3 (2.0)	4.7 (1.8)	4.6 (1.9)

Source: National Micronutrient Survey, 2007, Ministry of Health

**TABLE 51: PREVALENCE OF NCD RISK - 2004**

Risk factors	Combined (%)	Men (%)	Women (%)	p value
<i>Current daily smoking (n = 2,028)</i>	24.8	39.9	9.6	0.0001
<i>Inadequate consumption of fruits &amp; vegetables (&lt; 5 servings) (n = 2,024)</i>	97.3	96.6	97.9	0.588
<i>Inactive in all domains of physically activity (n = 2,028)</i>	30.2	36.8	24.3	0.0001
<i>Overweight (BMI*<math>\geq</math>23) (n = 2,019)</i>	63.3	60.8	65.5	0.0289
<i>Overweight (BMI<math>\geq</math>25) (n = 2,019)</i>	43.5	38.1	48.1	0.0001
<i>Abdominal obesity (WC@ &gt; 90 cm in men &amp; &gt; 80 cm in women) (n = 2,004)</i>	40	24.2	54.1	0.0001
<i>Hypertension (<math>\geq</math>140/90 or on drugs) (n = 2,015)</i>	31.5	29.7	32.9	0.1255
<i>Diabetes mellitus (FBG\$ <math>\geq</math> 7.0 mmol/dl) (n = 1,556)</i>	4.5	4.3	4.7	0.7049
<i>Impaired fasting glycemia (FBG\$ <math>\geq</math> 6.1 - 7.0 mmol/dl) (n = 1,556)</i>	3.04	2.3	3.7	0.11
<i>Hypercholesterolemia (<math>\geq</math> 5.2 mmol / dl) (n = 1,556)</i>	54.4	53.7	54.9	0.6362
<i>Hypertriglyceridemia (<math>\geq</math> 1.73 mmol/dl) (n = 1,546)</i>	22.1	28.2	16.6	0.0001
<i>Low HDL# cholesterol (&lt; 1.04 mmol/dl among men &amp; &lt;1.30 among women) (n = 1,541)</i>	49.1	41.1	56.3	0.0001

Source: NCD Risk Factor Survey ,2004, Ministry of Health

\* - BMI – Body Mass Index  
 @ - WC – Waist Circumference  
 \$ - FBG - Fasting blood Glucose  
 # - High Density Cholesterol

**TABLE 52: COMPARISON OF REPRODUCTIVE HEALTH RELATED INDICATORS - 1999, 2004, 2007 & 2009**

Indicators	1999	2004	2007	2009
<i>At least one ANC visit during pregnancy</i>	88%	99%	99.90%	87%
<i>Four or more ANC visits during pregnancy</i>	62%	91%	93.20%	85%
<i>Skilled Birth Attendance Rate</i>	...	85%	...	94.80%
<i>Postnatal care coverage (contact with health care provider within six weeks following delivery)</i>	...	60%	...	...
<i>Contraceptive Prevalence Rate (All methods including traditional methods)</i>	42%	39%	...	34.70%
<i>Contraceptive Prevalence Rate (Modern methods of contraception)</i>	32%	34%	...	27.00%
<i>Unmet Need for Family Planning</i>	42%	37%	...	28.10%

Source: Reproductive Health Survey 1999 & 2004, National Micronutrient Survey 2007, Maldives Demographic Health Survey 2009, Ministry of Health

... Not Available

**TBALE 53: ANAEMIA AMONG WOMEN –MICS 2001**

	Percentage of women with any anaemia	Mild Anaemia <sup>1</sup>	Moderate Anaemia <sup>2</sup>	Severe Anaemia <sup>3</sup>	Number of Women
<i>Pregnant</i>	55.4%	31.1%	23.0%	1.4%	74
<i>Not pregnant</i>	49.6%	39.6%	9.1%	0.9%	1287

Source: Multiple Indicator Cluster Survey, 2001, Ministry of Health

<sup>1</sup>Mild Anaemia (10.0-10.9 grams per decilitre (g/dl) for pregnant women and 10.0-11.9 (g/d) for non pregnant women).

<sup>2</sup>Moderate Anaemia (7.0-9.9 grams per decilitre (g/dl) for all women).

<sup>3</sup>Severe Anaemia (less than 7.0 grams per decilitre (g/dl) for all women).

**TABLE 54: ANAEMIA AMONG WOMEN – NMS 2007**

Type of Anaemia	Anaemia Prevalence (percentage)
<i>Valid N</i>	1284
<i>Moderate Anaemia<sup>1</sup></i>	15.1%
<i>Severe Anaemia<sup>2</sup></i>	0.3%

Source: National Micronutrient Survey ,2007, Ministry of Health

<sup>1</sup> Moderate Anaemia (7.0-10.9 grams per decilitre (g/dl))

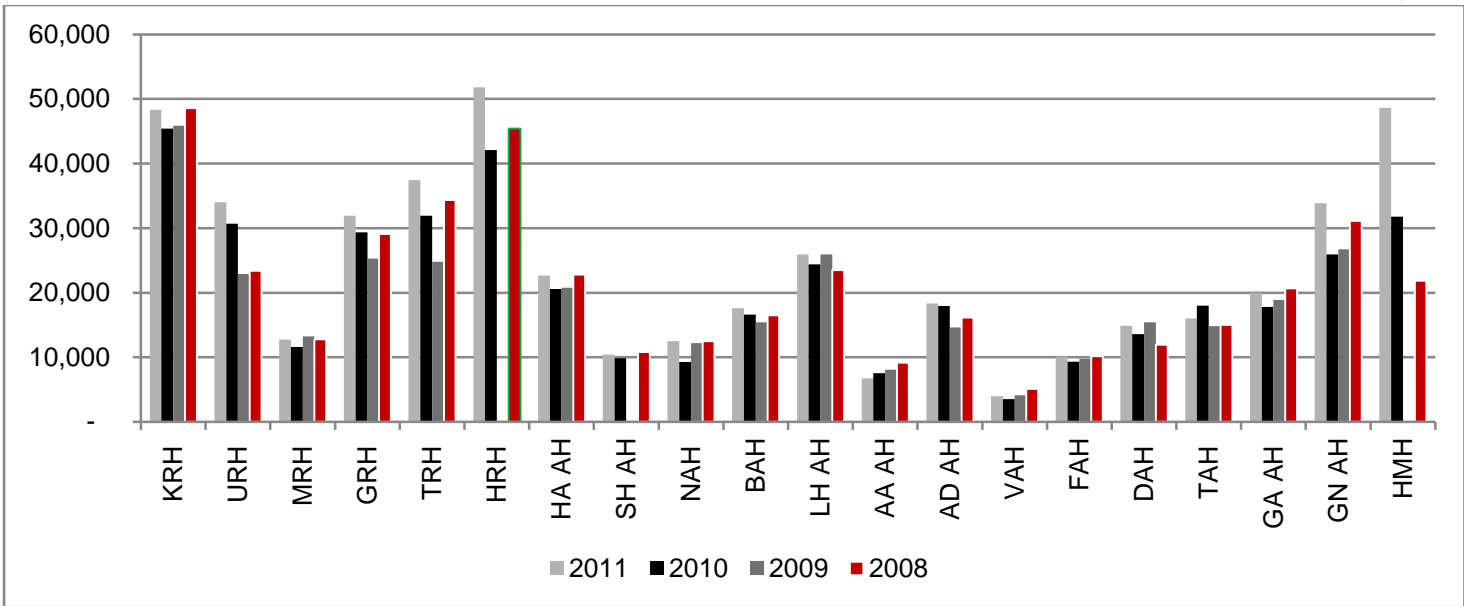
<sup>2</sup> Severe Anaemia (less than 7.0 grams per decilitre (g/dl))



# *Hospital Statistics*

## HOSPITAL STATISTICS

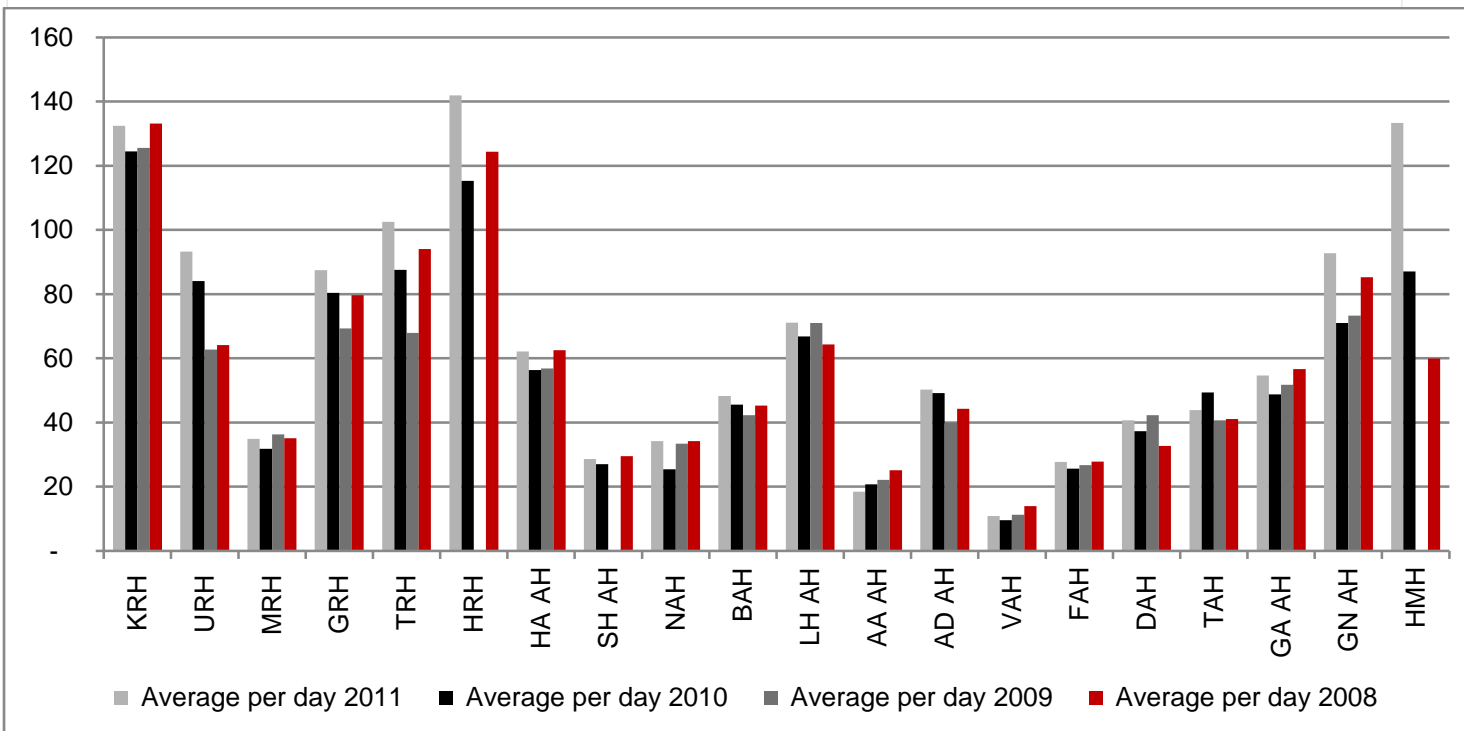
**GRAPH 21 : NUMBER OF OUTPATIENT VISITS BY HOSPITAL 2008 - 2011**



Source: Ministry of Health, 2011

Note: Bars are not visible for some hospital because data for those hospitals are not available

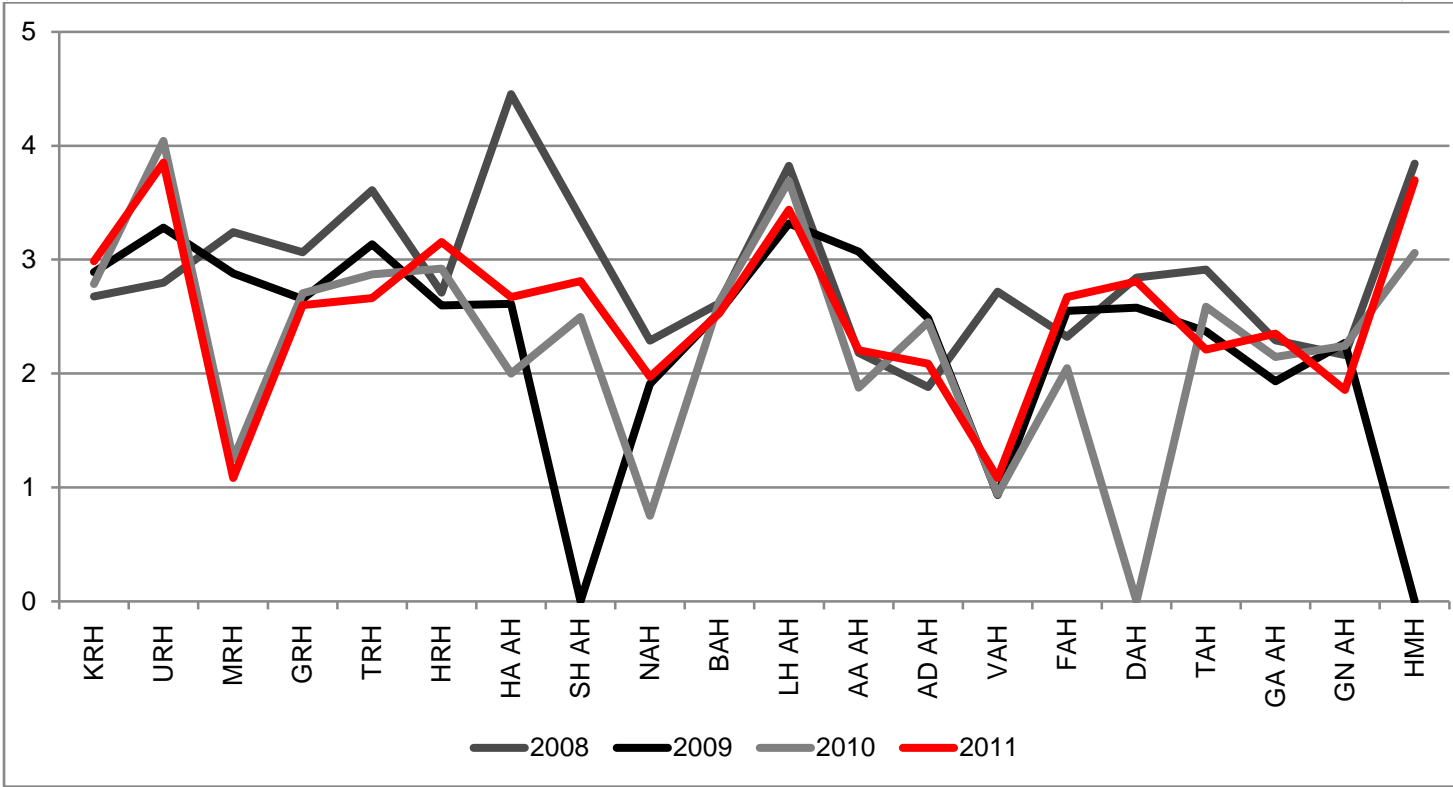
**GRAPH 22 : AVERAGE NUMBER OF OUTPATIENTS PER DAY BY HOSPITAL 2008 - 2011**



Source: Ministry of Health, 2011

Note: Bars are not visible for some hospital because data for those hospitals are not available

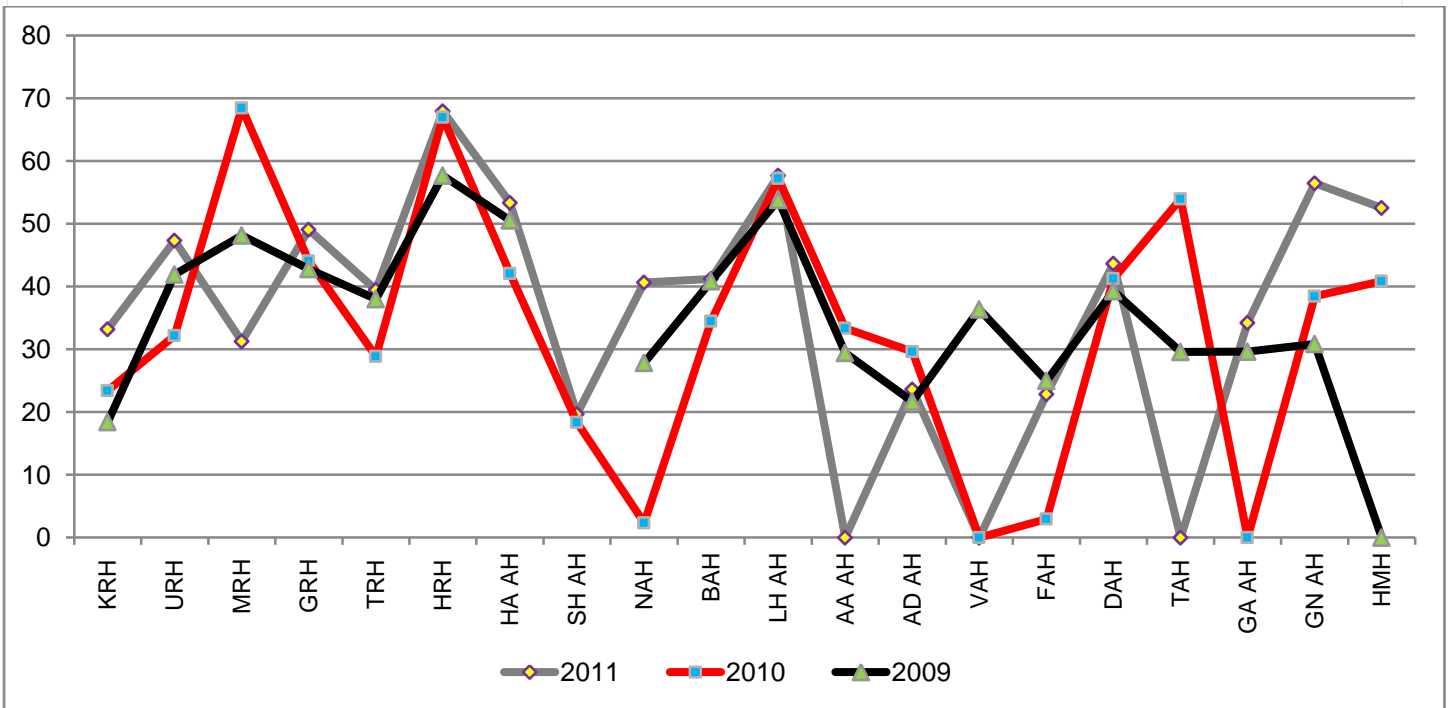
**GRAPH 23: AVERAGE LENGTH OF STAY BY HOSPITAL 2008 - 2011**



Source: Ministry of Health, 2011

Note: trend lines are touching "0" because data for those hospitals are not available

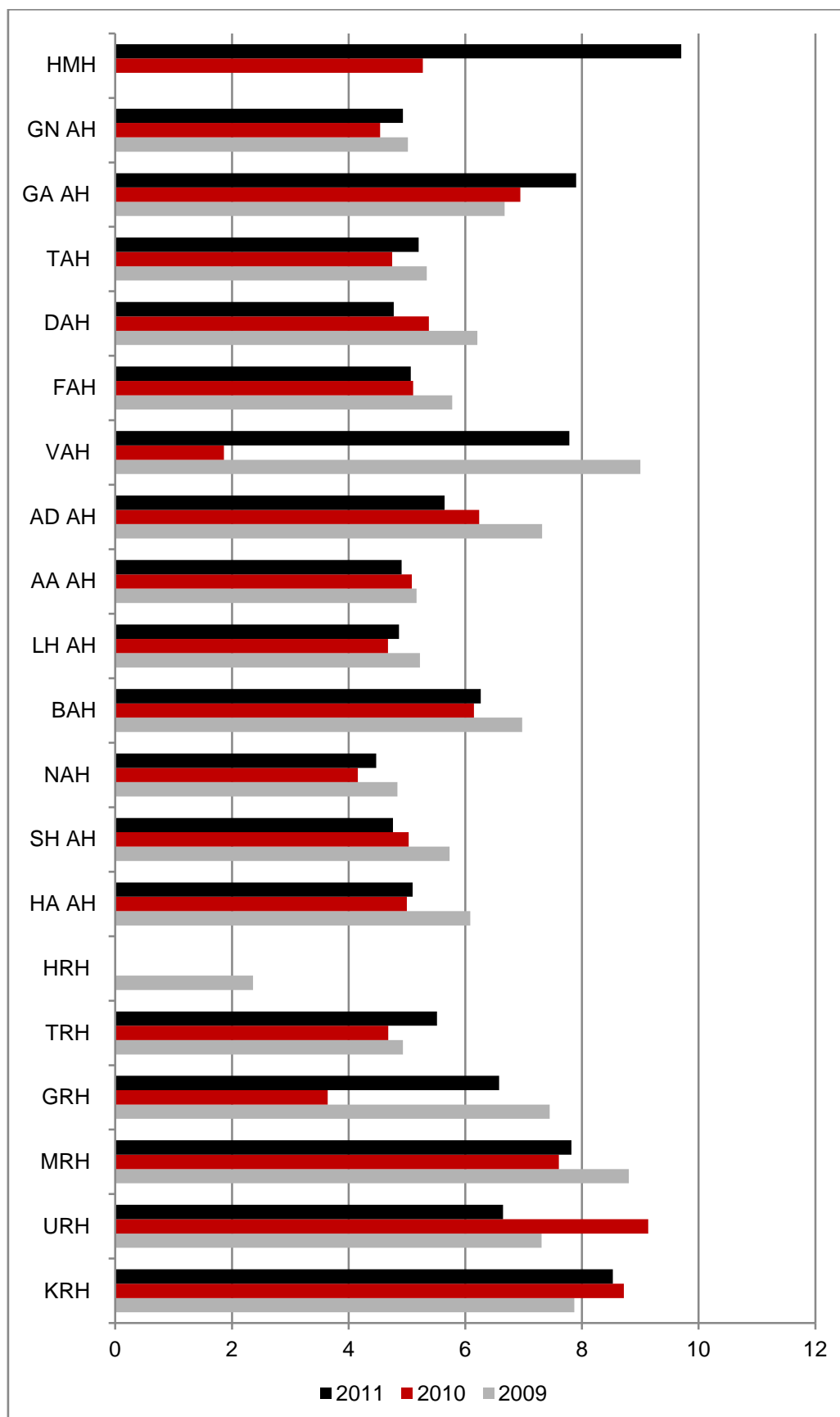
**GRAPH 24: LSCS PERCENTAGE BY HOSPITAL 2008 - 2011**



Source: Ministry of Health, 2011

Note: trend lines are touching "0" and breaks in line because data for those hospitals are not available, also for LSCS there were no LSCSs done in those hospitals

**GRAPH 25: NUMBER OF INVESTIGATIONS PER PATIENT, BY HOSPITALS 2009 - 2011**



Source: Ministry of Health, 2011  
 Note: Bars are not visible for some hospital because data for those hospitals are not available

**TABLE 55: NUMBER OF OUTPATIENT VISITS BY HOSPITAL 2008 - 2011**

Hospital	2008	2009	2010	2011
<i>Kulhudhufushi Regional Hospital</i>	45420	45833	48605	48357
<i>Ungoofaaruu Regional Hospital</i>	30667	22889	23413	34017
<i>Muli Regional Hospital</i>	11601	13242	12814	12752
<i>Gan Regional Hospital</i>	29347	25306	29093	31908
<i>Thinadhoo Regional Hospital</i>	31945	24790	34334	37430
<i>Hithadhoo Regional Hospital</i>	42084	...	45405	51786
<i>Haa Alif Atoll Hospital</i>	20577	20755	22828	22677
<i>Shaviyani Atoll Hospital</i>	9859	1831	10787	10428
<i>Noonu Atoll Hospital</i>	9285	12179	12491	12476
<i>Baa Atoll Hospital</i>	16625	15419	16509	17613
<i>Lhaviyani Atoll Hospital</i>	24400	25907	23481	25951
<i>Alif Alif Atoll Hospital</i>	7560	8064	9153	6735
<i>Alif Dhaalu Atoll Hospital</i>	17947	14610	16165	18340
<i>Vaavu Atoll Hospital</i>	3499	4112	5098	3955
<i>Faafu Atoll Hospital</i>	9344	9751	10144	10110
<i>Dhaalu Atoll Hospital</i>	13599	15445	11942	14851
<i>Thaa Atoll Hospital</i>	18007	14849	15002	16024
<i>Gaaf Alif Atoll Hospital</i>	17782	18876	20688	19961
<i>Gnaviyani Atoll Hospital</i>	25912	26740	31129	33851
<i>Hulhumale' Hospital</i>	31785	...	21861	48653

Source: Ministry of Health, 2011

... data not available

Note: this table is based on data provided by hospitals

**TABLE 56: AVERAGE NUMBER OF OUTPATIENT VISITS PER DAY, BY HOSPITAL, 2008 - 2011**

Hospital	2008	2009	2010	2011
<i>Kulhudhufushi Regional Hospital</i>	124	126	133	132
<i>Ungoofaaru Regional Hospital</i>	84	63	64	93
<i>Muli Regional Hospital</i>	32	36	35	35
<i>Gan Regional Hospital</i>	80	69	80	87
<i>Thinadhoo Regional Hospital</i>	88	68	94	103
<i>Hithadhoo Regional Hospital</i>	115	...	124	142
<i>Haa Alif Atoll Hospital</i>	56	57	63	62
<i>Shaviyani Atoll Hospital</i>	27	5	30	29
<i>Noonu Atoll Hospital</i>	25	33	34	34
<i>Baa Atoll Hospital</i>	46	42	45	48
<i>Lhaviyani Atoll Hospital</i>	67	71	64	71
<i>Alif Alif Atoll Hospital</i>	21	22	25	18
<i>Alif Dhaalu Atoll Hospital</i>	49	40	44	50
<i>Vaavu Atoll Hospital</i>	10	11	14	11
<i>Faafu Atoll Hospital</i>	26	27	28	28
<i>Dhaalu Atoll Hospital</i>	37	42	33	41
<i>Thaa Atoll Hospital</i>	49	41	41	44
<i>Gaaf Alif Atoll Hospital</i>	49	52	57	55
<i>Gnaviyani Atoll Hospital</i>	71	73	85	93
<i>Hulhumale' Hospital</i>	87	...	60	133

Source: Ministry of Health, 2011

... data not available

Note: this table is based on data provided by hospitals

**TABLE 57: TOTAL NUMBER OF INPATIENTS, BY HOSPITAL, 2008 - 2011**

Hospital	2008	2009	2010	2011
<i>Kulhudhufushi Regional Hospital</i>	1273	2461	2620	2911
<i>Ungoofaaru Regional Hospital</i>	713	1018	1317	1444
<i>Muli Regional Hospital</i>	288	523	396	411
<i>Gan Regional Hospital</i>	744	1672	1481	2303
<i>Thinadhoo Regional Hospital</i>	1049	1887	2395	2649
<i>Hithadhoo Regional Hospital</i>	2409	...	3209	3572
<i>Haa Alif Atoll Hospital</i>	396	816	1204	1108
<i>Shaviyani Atoll Hospital</i>	269	67	238	547
<i>Noonu Atoll Hospital</i>	299	505	341	674
<i>Baa Atoll Hospital</i>	280	762	630	648
<i>Lhaviyani Atoll Hospital</i>	424	895	873	1014
<i>Alif Alif Atoll Hospital</i>	266	367	249	221
<i>Alif Dhaalu Atoll Hospital</i>	357	712	710	592
<i>Vaavu Atoll Hospital</i>	86	126	195	109
<i>Faafu Atoll Hospital</i>	207	410	525	456
<i>Dhaalu Atoll Hospital</i>	216	633	567	615
<i>Thaa Atoll Hospital</i>	278	642	664	765
<i>Gaaf Alif Atoll Hospital</i>	479	879	796	698
<i>Gnaviyani Atoll Hospital</i>	935	1701	1859	2174
<i>Hulhumale' Hospital</i>	1805	...	2516	1368

Source: Ministry of Health, 2011

... data not available

Note: this table is based on data provided by hospitals

**TABLE 58: AVERAGE HOSPITAL LENGTH OF STAY, BY HOSPITAL, 2008 - 2010**

Hospital	2008	2009	2010	2011
<i>Kulhudhufushi Regional Hospital</i>	3	3	3	3
<i>Ungoofaaru Regional Hospital</i>	3	3	4	4
<i>Muli Regional Hospital</i>	3	3	1	1
<i>Gan Regional Hospital</i>	3	3	3	3
<i>Thinadhoo Regional Hospital</i>	4	3	3	3
<i>Hithadhoo Regional Hospital</i>	3	3	3	3
<i>Haa Alif Atoll Hospital</i>	4	3	2	3
<i>Shaviyani Atoll Hospital</i>	3	5	2	...
<i>Noonu Atoll Hospital</i>	2	2	...	2
<i>Baa Atoll Hospital</i>	3	3	...	3
<i>Lhaviyani Atoll Hospital</i>	4	3	4	3
<i>Alif Alif Atoll Hospital</i>	2	3	2	2
<i>Alif Dhaalu Atoll Hospital</i>	2	2	2	2
<i>Vaavu Atoll Hospital</i>	3	1	1	1
<i>Faafu Atoll Hospital</i>	2	3	2	3
<i>Dhaalu Atoll Hospital</i>	3	3	0	3
<i>Thaa Atoll Hospital</i>	3	2	3	2
<i>Gaaf Alif Atoll Hospital</i>	2	2	2	2
<i>Gnaviyani Atoll Hospital</i>	2	2	2	2
<i>Hulhumale' Hospital</i>	4	...	3	4

Source: Ministry of Health, 2011

... data not available

Note: this table is based on data provided by hospitals



**TABLE 59: AVERAGE BED OCCUPANCY RATE, BY HOSPITAL, 2008 - 2011**

Hospital	2008	2009	2010	2011
<i>Kulhudhufushi Regional Hospital</i>	56	53	53	67
<i>Ungoofaaru Regional Hospital</i>	49	39	61	60
<i>Muli Regional Hospital</i>	19	15	...	6
<i>Gan Regional Hospital</i>	33	40	32	26
<i>Thinadhoo Regional Hospital</i>	36	32	33	41
<i>Hithadhoo Regional Hospital</i>	73	...	68	74
<i>Haa Alif Atoll Hospital</i>	30	12	16	9
<i>Shaviyani Atoll Hospital</i>	21	17	...	33
<i>Noonu Atoll Hospital</i>	17	16	...	22
<i>Baa Atoll Hospital</i>	19	33	...	29
<i>Lhaviyani Atoll Hospital</i>	33	32	39	41
<i>Alif Alif Atoll Hospital</i>	27	26	12	10
<i>Alif Dhaalu Atoll Hospital</i>	25	31	28	20
<i>Vaavu Atoll Hospital</i>	19	10	...	5
<i>Faafu Atoll Hospital</i>	18	18	20	23
<i>Dhaalu Atoll Hospital</i>	8	12	...	11
<i>Thaa Atoll Hospital</i>	29	17	19	17
<i>Gaaf Alif Atoll Hospital</i>	15	16	12	11
<i>Gnaviyani Atoll Hospital</i>	45	44	44	35
<i>Hulhumale' Hospital</i>	25	...	18	24

Source: Ministry of Health, 2011

... data not available

Note: this table is based on data provided by hospitals

*Others*

## OTHERS

**TABLE 43: CONTRACEPTIVE USER RATE, 2006 - 2011**

Year	Republic			Malé			Atolls		
	Total	Male	Female	Total	Male	Female	Total	Male	Female
2001	20.4	22.8	77.2	15.6	18.9	81.1	22.3	23.9	76.1
2002	20.8	22.3	77.7	17.8	13.5	86.5	21.9	25.0	75.0
2003	22.1	21.1	78.9	20.0	13.7	86.3	23.2	23.4	76.6
2004	22.4	19.9	80.1	21.7	12.2	87.8	22.7	22.8	77.2
2005	22.0	20.0	80.0	22.4	10.5	89.5	21.9	23.5	76.5
2006	23.7	22.4	77.6	27.5	20.1	79.9	22.4	23.4	76.6
2007	22.5	16.4	83.7	25.0	7.7	92.3	21.6	20.1	80.0
2008	22.3	13.6	86.4	25.5	5.7	94.3	21.1	17.0	83.0
2009	15.1	25.5	74.5	7.9	16.9	83.1	19.2	27.4	72.6
2010	18.7	26.2	73.8	12.9	29.2	70.8	22.0	25.3	74.7
2011	20.1	21.8	71.9	10.5	20.7	77.6	25.2	22.1	70.8

*Source: Center for Community Health and Disease Control ,2011*

**TABLE 44: CONTRACEPTIVE USER RATE BY ATOLLS, 2006 - 2011**

Atoll Name	2007	2008	2009	2010	2011
<i>Haa Alif</i>	16.1	14.7	14.3	38.3	21.2
<i>Haa Dhaal</i>	22.5	19.8	40.8	21.9	34.7
<i>Shaviyani</i>	19.6	18.5	27.5	26.0	52.1
<i>Noonu</i>	20.1	17.7	16.1	32.4	42.9
<i>Raa</i>	21.0	22.2	18.3	19.7	38.2
<i>Baa</i>	29.3	22.7	20.8	20.1	25.3
<i>Lhaviyani</i>	22.2	26.2	38.5	37.2	28.8
<i>Kaafu</i>	19.1	20.7	2.6	14.1	43.6
<i>Alifu Uthuru</i>	17.7	12.5	29.1	21.4	38.1
<i>Alifu Dhekunu</i>	33.3	20.9	26.2	18.7	25
<i>Vaavu</i>	17.2	17.7	23.5	26.0	31.6
<i>Meemu</i>	33.0	38.5	21.5	35.7	17.1
<i>Faafu</i>	12.5	15.0	25.3	15.1	25.9
<i>Dhaal</i>	20.9	14.8	28.8	26.9	18.6
<i>Thaa</i>	12.6	14.8	12.0	18.1	26.8
<i>Laamu</i>	54.8	67.8	18.9	32.2	34.6
<i>Gaaf Alif</i>	16.5	11.9	17.9	9.9	15.7
<i>Gaaf Dhaal</i>	13.5	13.5	12.3	19.0	18.8
<i>Gnaviyani</i>	20.6	20.4	8.6	7.6	10.1
<i>Seenu</i>	16.1	16.4	2.7	7.6	2.5
<i>Male'</i>	25.0	25.5	7.9	12.9	10.7
<b>Republic</b>	<b>22.5</b>	<b>22.3</b>	<b>15.1</b>	<b>18.7</b>	<b>21.4</b>

Source: Center for Community Health and Disease Control, 2011

**TABLE 45: DRUG ABUSE CASES REPORTED BY AGE, 2001 - 2011**

Year	< 16 yrs	16 - 24 yrs	25 - 39 yrs	40 +	Total
2001	5	57	124	9	195
2002	11	212	164	29	416
2003	37	192	167	23	419
2004	12	390	361	34	797
2005	13	401	362	50	826
2006	14	603	605	78	1290
2007	16	832	757	84	1689
2008	24	1326	1135	133	2618
2009	23	863	811	123	1820
2010	16	567	465	112	1160
2011	26	755	515	157	1453

Source: Bureau of Crime Records / Maldives Police Services, 2011

**TABLE 46: IMPORTS OF TOBACCO, 2001 - 2011**

Year	Tobacco Leaves (Kgs)	Number of cigars	Number of cheroots	Number of cigarettes	Chewing tobacco by weight (Kgs)
2001	44,168.70	187,156	4,056,070	223,540,520	2,405.28
2002	45,533.88	315,080	251,900	229,788,400	8,398.13
2003	30,598.25	289,183	67,625	226,903,220	4,718.08
2004	63,056.02	226,473	3,878	256,586,880	7,900.91
2005	45,505.15	200,968	4,125	263,461,671	11,976.92
2006	36,034.29	836,168	786,000	255,544,900*	22,019.04
2007	24,493.13	316,207	27,157,100	286,444,050	17,949.77
2008	29,810.81	586,111	37,159,860	334,128,160	25,511.08
2009	10,654.61	366,317	30,775,600	348,020,191	24,325.16
2010	32,827.75	237,074	85,000	346,371,400	20,447.78
2011	21,879.40	331,789	7,000,000	454,893,880	30,280.85

Source: Maldives Customs Service, 2011

\*Revised figure

# *Appendices*

## APPENDIX

### PROJECTED MID YEAR POPULATION ESTIMATES BY AGE 2007-2013

Age Group	2009	2010	2011	2012	2013	2014	2015
All ages	<b>314,542</b>	<b>319,738</b>	<b>325,135</b>	<b>330,652</b>	<b>336,224</b>	<b>341,848</b>	<b>347,552</b>
0-4	28,508	29,492	30,568	32,019	33,143	33,931	34,447
5-9	27,393	26,871	26,588	26,644	27,144	28,071	29,250
10-14	33,445	31,897	30,479	29,233	28,169	27,305	26,729
15-19	39,817	38,900	37,768	36,442	34,948	33,373	31,841
20-24	39,633	40,331	40,698	40,715	40,383	39,734	38,819
25-29	31,311	33,543	35,480	37,135	38,492	39,525	40,228
30-34	22,752	23,683	25,033	26,764	28,882	31,202	33,430
35-39	19,972	20,473	20,990	21,515	22,024	22,644	23,576
40-44	17,526	17,992	18,440	18,878	19,344	19,832	20,332
45-49	15,377	15,673	16,035	16,423	16,857	17,326	17,795
50-54	11,499	12,669	13,604	14,295	14,761	15,078	15,381
55-59	6,640	7,130	7,851	8,761	9,904	11,145	12,282
60-64	5,507	5,560	5,673	5,813	6,002	6,290	6,764
65-69	5,425	5,294	5,198	5,090	5,037	5,037	5,095
70-74	4,895	4,985	4,995	4,882	4,768	4,664	4,575
75-79	2,730	2,993	3,332	3,474	3,619	3,754	3,867
80+	2,112	2,252	2,403	2,569	2,747	2,937	3,141

*Source: Statistical Year Book of Maldives 2011, Department of National Planning (from DNP website)*

### CENSUS POPULATION BY SEX 1990-2006

	1990	1995	2000	2006
<b>Both sexes</b>	213,215	244,814	270,101	298,968
<b>Male</b>	109,336	124,622	137,200	151,459
<b>Female</b>	103,879	120,192	132,901	147,509
<b>% Male</b>	51.28	50.9	50.8	50.66
<b>% Female</b>	48.72	49.1	49.2	49.33

*Source: Statistical Year Book of Maldives 2006, Ministry of Planning and National Development*

### POPULATION GROWTH RATE 1990-2006

	1990	1995	2000	2006
<b>Population</b>	213,215	244,814	270,101	298,968
<b>Numerical Increase</b>	33,127	31,599	25,287	28,867
<b>Average Annual growth</b>	3.43	2.73	1.96	1.69

*Source: Analytical Report - Maldives Population and Housing Census 2006, Ministry of Planning and National Development*

**SUMMARY MEASURES OF FERTILITY BASED ON REPORTED BIRTH DATA FROM CENSUS, MALDIVES  
1990, 2000 AND 2006**

	1990	2000	2006
	<b>Fertility Index</b>		
<b>General Fertility Rate (GFR)</b>			
<i>Republic</i>	202.68	86.08	66.81
<i>Male'</i>	121.11	46.18	48.02
<i>Atolls</i>	235.02	103.66	80.74
<b>Total Fertility Rate (TFR)</b>			
<i>Republic</i>	6.40	2.84	2.15
<i>Male'</i>	3.88	1.58	1.47
<i>Atolls</i>	7.40	3.37	2.60
<b>Gross Reproduction Rate (GRR)</b>			
<i>Republic</i>	3.16	1.40	1.05
<i>Male'</i>	1.98	0.80	0.71
<i>Atolls</i>	3.63	1.65	1.28

Source: Analytical Report - Maldives Population and Housing Census 2006, Ministry of Planning and National Development



# *References*

## REFERENCES

- Department of National Planning (2011), Statistical Year Book of Maldives 2011, Male', Department of National Planning
- Ministry of Health (2004), Maldives Health Report 2004, Male', Ministry of Health
- Ministry of Health (2001), Multiple Indicator Cluster Survey 2001, Male', Ministry of Health
- Ministry of Health (2007), National Micronutrient Survey 2007, Male', Ministry of Health
- Ministry of Health (2004), NCD Risk Factors Survey 2004, Male', Ministry of Health
- Ministry of Health (1999), Reproductive Health Survey 1999, Male', Ministry of Health
- Ministry of Health (2004), Reproductive Health Survey 2004, Male', Ministry of Health
- Ministry of Health (2007), The Maldives Health Statistics 2007, Male', Ministry of Health
- Ministry of Health & Family (2009), The Maldives Health Statistics 2009, Male', Ministry of Health & Family
- Ministry of Health & Family (2010), The Maldives Health Statistics 2010, Male', Ministry of Health & Family
- Ministry of Health (2011), Vital Statistics System Database 2011, Male', Ministry of Health
- Ministry of Planning & National Development (2006), Analytical Report – Maldives Population and Housing Census 2006, Male', Ministry of Planning & National Development
- Ministry of Health & Family (2009), Maldives Demographic and Health Survey 2009, Male', Ministry of Health & Family

**Ministry of Health**

Roashanee Buidling, Sosun Magu, Male', Republic of Maldives  
Email:ppd@health.gov.mv, phone: +960 3328887, Fax: +960 3328889